



# COMPACT TRACTOR ATTACHMENTS

Selection,  
Innovation,  
Performance

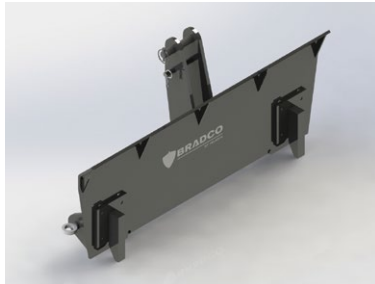
Your One-Stop Shop  
for Hydraulic Tools  
and Attachments





# COMPACT TRACTOR ATTACHMENTS

## ADAPTER PLATE



Permits the use of skid-steer attachments such as pallet forks and landscape tools and tractor 3-point. Rugged design and positive locking wedges.

- Quickly pins to tractor 3-point and wedge attaches to your skid-steer attachments
- Top link cylinder kit replaces the tractor top link for hydraulically positioning attachments

## AUGERS - X975, X1475, X1975, X2475, X3575



75 Series drive units are completely sealed with all moving components running in oil for total lubrication on a constant basis. The 75 Series hydraulic motor drives the auger through a sealed planetary gear reduction.

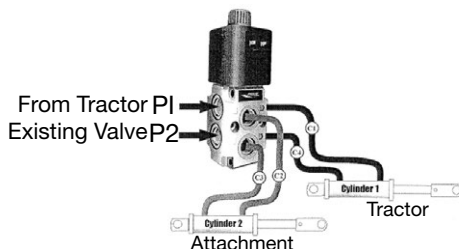
Heavy duty all gear design gives these units a long life with minimal maintenance and service costs. All models feature reverse rotation for quick backout when obstructions are encountered

The systems' hydraulic relief valve protects the units from damage when the auger hits large immovable objects.

Specifications	X975	X1475	X1975	X2475	X3575
Maximum Auger Diameter	24"	30"	36"	36"	48"
Minimum Hydraulic Flow	10 GPM	10 GPM	15 GPM	20 GPM	18 GPM
Maximum Hydraulic Flow	14 GPM	25 GPM	30 GPM	35 GPM	30 GPM
Maximum Continuous Operating PSI	3000 PSI	3000 PSI	3000 PSI	3000 PSI	3000 PSI
Output Shaft Options	2" hex	2" hex	2" hex	2" hex	2" hex
	2.56" round	2.56" round	2.56" round	2.56" round	
Output Flow	6-15 GPM	10-25 GPM	15-30 GPM	20-35 GPM	24-30 GPM
Output Speed	36-89 RPM	38-94 RPM	49-97 RPM	52-73 RPM	45-78 RPM
Output Pressure	PSI	PSI	PSI	PSI	PSI
	2000-3000	2000-3000	2000-3000	2000-3000	2500-3000
Output Torque	lb. ft.	lb. ft.	lb. ft.	lb. ft.	lb. ft.
	1000-1500	1600-2377	1856-2769	2308-3451	3566-4279



## AUXILIARY HYDRAULIC CONVERSION KIT



Used to convert existing tractor loader 2-function hydraulics to allow a 3rd function for controlling various hydraulic accessory attachments, for example hydraulic grapples and multipurpose buckets. Can plumb into existing loader bucket cylinder circuit.

# BUCKETS



### 4-in-1 Multi-Purpose Bucket

60" and 72" models available. Functions as a loader bucket, clam, grapple, dozer, box scraper, & bottom dump bucket. Has strong hinges & pins to distribute load. The bottom dump buckets allows the operator to dump into high side board trucks

- 100,000 yield light weight material construction allows more load capacity
- Optional bolt-on tooth bar available

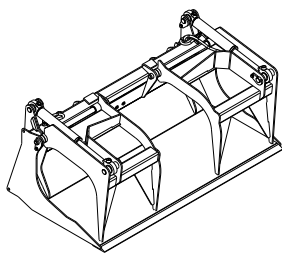
Specifications	108196	108198
Width (overall)	60"	72"
Height (overall)	27"	27"
Length without teeth (overall)	28"	28"
Front Length without teeth	15"	15"
Rear Length	14"	14"
Grapple Opening	28"	28"
Weight (lbs)	380	430
Maximum Capacity (sq. ft.)	11.2	13.5
Maximum Clam Force (lbs.)	3,600	3,600



### Rock Bucket

Designed to collect rocks and debris, allowing soil to sift through. Rake design allows for fast clean-up, ground leveling and gathering materials away from buildings and obstructions. Leave the dirt and pay less at the land fill! Exclusive Bradco engineered alloy allows for higher strength and impact resistance.

Specifications	108603
Width (overall)	55.3"
Height (overall)	21.5"
Length (overall)	23.5"
Tine Spacing (between tines)	2.0"
Number of tines	18
Tine Rod Diameter	1.13"
Weight (lbs)	300



### Scrap Grapple Bucket

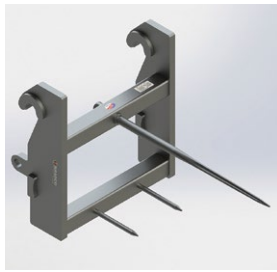
Ideal for brush and refuse removal.

- 1.25 stress proof and zinc plated pins
- Joints have grease fittings for long life

Specifications	10705-60	10705-66	10705-72
Width (overall)	60"	66.6"	72.8"
Height (overall)	27.7"	28.7"	29"
Depth (overall)	32.5"	32.5"	34.5"
Grapple Opening	32.5"	32.5"	34.7"
Weight (shipping)	560 lbs	595 lbs	635 lbs
Maximum Tractor	40 HP	40 HP	40 HP

# COMPACT TRACTOR ATTACHMENTS

## BALE SPEAR



Built to lift, transport, and stack round or square bales of organic materials.

- Designed to fit compact tractors up to 50 hp
- Picks up one large round bale up to 6' in diameter
- Available in single, dual, and triple spears



Specifications	17200-Single	17212-Dual	11910-Single	11920-Dual	17213-Triple	10712
Width (overall)	45.3"	45.3"	45.3"	45.3"	45.3"	45.3"
Height (overall)	22.4"	22.4"	22.4"	22.4"	22.4"	22.4"
Depth (overall)	50.5"	50.5"	50.5"	50.5"	50.5"	50.5"
Shipping Weight	145 lbs	155 lbs	195 lbs	235 lbs	230 lbs	150 lbs
Bale Capacity @ 24"	2,000 lbs	3,000 lbs	3,000 lbs	4,000 lbs	4,000 lbs	3,000 lbs
Main Spear	(1) 1.75" x 49"	(2) 1.75" x 49"	(1) 2.1875" x 53"	(2) 2.1875" x 53"	(3) 1.75" x 49"	(1) 2.1875" x 53"
Stabilizer Spear	(2) 1.25" x 20"	N/A	(2) 1" x 19"	(1) 1" x 19"	N/A	(2) 1" x 19"
Weight (lbs)	145	155	195	235	230	150

Subject to change without notice.

## GRABBING TOOLS



### JAWZ™

The standard JAWZ™ Grabbing Tool is a patented hydraulic attachment for removing invasive trees and shrubs of all sizes.

- Vegetation is removed completely in a single pass
- Dual cylinders power the steel fingers or “pinchers”
- Ideal for farmers, ranchers, urban land management, construction contractors, landscape contractors, timber/forestry and land conservation

Specifications	Standard-JAWZ™
Order Code	30440-0022
Weight	516 lbs
Overall Height	19"
Overall Length	41"
Overall Width	47"
Maximum Jaw Opening	33"
Maximum Lifting Weight*	3,000 lbs

\* JAWZ™ Grabbing Tool only - refer to prime mover manual for maximum lifting capacity of the machine

## GRAPPLES



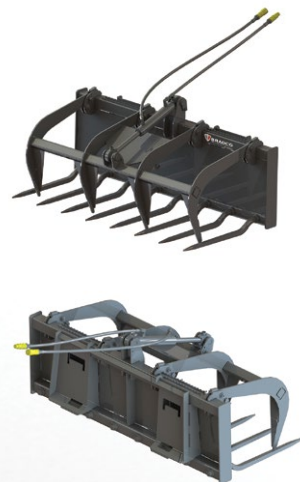
### Brush and Scrap Grapples

Aggressive grapple made of high strength steel for maximum performance and durability. Cylinder guard design protects cylinder while preventing build-up of debris. Great for cleaning up and transporting branches, brush, and limbs.

- Provides excellent visibility
- Contact factory for loader auxiliary hydraulic kit

Specifications	Brush			Scrap
	108597	108548	108415	108605
Width (overall)	48"	54"	72"	48"
Height (overall)	25.5"	25.5"	25.63"	25.6"
Length (overall)	30.5"	30.5"	30.5"	30.0"
Tine Spacing	5.7"	5.7"	5.7"	NA
Grapple Opening	29.0"	29.0"	29.0"	28.2"
Clamping Force (lbs)	1,100	1,100	1,100	1,100
Grapple Opening	3	3	3	3
Cylinders	1	1	1	1
Weight (lbs)	300	315	435	351

## MANURE FORK



Moves loose hay & manure. Ideal for moving brush and small branches.

- Provides excellent visibility
- Moves loose hay & manure and is ideal for moving brush and small branches
- Single auxiliary hydraulic circuit
- Dual cylinders
- Replaceable tines

Specifications	10708-60	10708-72	10708-84	10708-96
Width (overall)	60"	72"	84"	96"
Height (overall)	30"	30"	30"	30"
Depth (overall)	35"	35"	35"	35"
Grapple Opening	37"	37"	37"	37"
Weight (shipping)	530 lbs	605 lbs	755 lbs	805 lbs
Maximum Tractor HP	40 HP	40 HP	40 HP	40 HP
Maximum Operating Weight	4,000 lbs	4,000 lbs	4,000 lbs	4,000 lbs
Tine Spacing	8.5"	8.25"	8.5"	8.38"

## MANURE PUSH



Ideal for waste water, manure, feed lots and flood clean-up. Also moves large volumes of snow efficiently. Optional pull back kit draws back snow from building, fences and confined areas.

- Rubber edge 1' x 6" on scraper and pull back blade

Specifications	10711-60	10711-72	10711-84	10711-96
Width (overall)	60"	72"	84"	96"
Height (overall)	28"	28"	28"	28"
Depth (overall)	29"	29"	29"	29"
Weight (lbs)	320	355	395	430



# COMPACT TRACTOR ATTACHMENTS

## PALLET FORKS



### Pin Style Pallet Forks

Equipped with standard brick guard and adjustable tines. Floating pin.

- 42" and 48" for tine lengths available
- 3,740 lb capacity at 24" load center

### ITA Rail Style Pallet Forks

High strength lightweight frame for larger pay load. Open guard for excellent visibility. Patented load retention ring. Class II ITA fork with positioning lock pin. Optional Auger mount, Bales Spear, and 2" Receiver Hitch.

- 36", 42" & 48" tines available
- 2,300 lb rated capacity at 24" load center



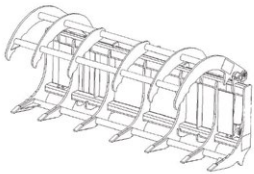
Specifications	10703-42	10703-48
Width (overall)	47.625"	47.625"
Height (overall)	31"	31"
Depth (overall)	51"	57"
Weight (lbs)	335	355
Tine Length	42"	48"

Specifications	108308	108309
Width (overall)	45.2"	45.2"
Height (overall)	5.6"	5.6"
Adjustable Spacing - Max.	42.5"	42.5"
Weight (lbs)	265	265

## ROOT RAKE



Designed to collect rocks and debris, allowing soil to sift through. Rake design allows for fast clean-up, ground leveling and gathering materials away from buildings and obstructions. Leave the dirt and pay less at the land fill! Exclusive Bradco engineered alloy allows for higher strength and impact resistance.



Specifications	109982	109983	109984
Width (overall)	60"	66"	72"
Height (overall)	28.1"	28.1"	28.1"
Length (overall)	19.5"	19.5"	19.5"
Tine Spacing (between tines)	12.0"	9/12/9"	12.0"
Grapple Width	57.1"	57.1"	57.1"
Grapple Opening	32.5"	32.5"	32.5"
Weight (lbs)	413	439	448
Maximum Tractor	40 HP	40 HP	40 HP

## TM4 & TM5 RAKES



Increase the value of your compact tractor with greater versatility & job opportunities. Prepare landscape in tight places where maneuverability is needed. Adjustable polyurethane barrier above the roller allows you to quickly react to soil moisture conditions, from opening up muddy sites to finishing with the perfect seedbed. Grade, level, rake and remove debris. Pulverize and prepare seedbed, dethatch or remove old lawns and weeds, all with one tool!

- 4ft and 5ft available

Specifications	TM-4	TM-5
Weight (lbs)	550	575
HP Range	15-22	18-32
Working Width - Straight	48"	60"
Working Width @ 15°	46"	58"
Angle Roll R or L	15°	15°
Roll-Back Barrier Range	.125" to 2"	.125" to 2"
3-Point Attachment	Limited Cat. 1	Limited Cat. 1

## SNOW PUSH & TRIP EDGE SNOW PUSH



Efficiently moves large volumes of snow. Ideal for waste water, manure, feed lots, and flow clean-up. Optional pull back kit draws snow from buildings, fences and confined areas. Cutting edge trip system allows operator to glide over manholes and curbs without losing gathered materials.

Specifications	10707	10709 Trip Edge
Width (overall)	62" to 98"	80" to 112"
Height (overall)	30.75"	39.80"
Depth (overall)	34"	44.1"
Weight (lbs)	415-518	850-1030

## SWEEPERS



### MRH - Compact Tractor Angle Sweeper - Hydraulic Drive

Features hydraulic drive and hydraulic pump driven from rear or mid PTO. Angles manually 30° left or right, with hydraulic angle kit available. Brush drive slips easily out of the core without removing the hydraulic lines. The brush lift is operated from the tractor's hydraulic system.

### MRH Specifications

Front-Mount Hydraulic Drive Driven From Rear 540 PTO			
	MRH4	MRH5	MRH6
Sweeping Width	48"	60"	72"
Sweeping Width at 30° Angle	41.5"	52"	60.5"
Brush Diameter	26"	26"	26"
Weight	480 lbs	540 lbs	600 lbs
Front-Mount Hydraulic Drive Driven From Mid 2000 PTO			
	MRHMP4	MRHMP5	MRHMP6
Sweeping Width	48"	60"	72"
Sweeping Width at 30° Angle	41.5"	52"	60.5"
Brush Diameter	26"	26"	26"
Weight	480 lbs	540 lbs	600 lbs



### RMRM - Compact Tractor Angle Sweeper - Mechanical 3-Point Drive

Features rear-mount mechanical drive driven from rear 540 PTO. Angles manually 30° left or right. Includes steel hood, chain shield, height adjustment chains, and mounting pins. T-Shaft gearbox allows for reversal of brush rotation of mechanical drive.

### RMRM

Specifications	RMRM4	RMRM5	RMRM6
Width	48"	60"	72"
Sweeping Width at 30° Angle	40"	52"	64"
Brush Diameter	24"	24"	24"
Weight	370 lbs	430 lbs	490 lbs



### MRHL - Compact Tractor Loader Angle Sweeper - Hydraulic Drive

Includes quick change core. Angles manually 30° left or right, with hydraulic angle kit available. Brush drive slips easily out of they core without removing hydraulic lines from the wheel motor. Hydraulic motor driven from the loader's hydraulic system. Independent hydraulic system available for vehicles without adequate hydraulic systems.

MRHL Specifications	22248	22260	22272
Sweeping Width	48"	60"	72"
Sweeping Width at 30° Angle	41.5"	52"	60.5"
Brush Diameter	26"	26"	26"
Weight	380 lbs	440 lbs	500 lbs
GPM Range	8-15	8-15	8-15
PSI	1200-2500	1200-2500	1200-2500

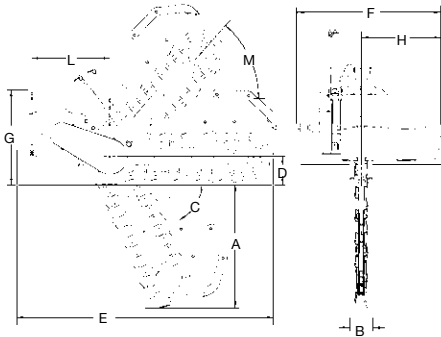
# COMPACT TRACTOR ATTACHMENTS

## TRENCHERS



### 330 Trencher

Bradco® 330 Trencher requires rear hydraulics to run machine. Comes with light/medium duty boom and crumber with replaceable wear strips. Easy installation and operation.



Specifications	330	
<b>Transport</b>		
A. Trench Depth with Auger at 65° Digging Angle	30"	36"
B. Chain Width	3.0", 4.5", 6.0", 8.0"	3.0", 4.5", 6.0", 8.0"
C. Recommended Trenching Angle	65°	65°
D. Headshaft Height (Auger Touching Ground)	8.5"	8.5"
E. Overall Length	73"	79"
F. Overall Width	38"	38"
G. Overall Height	29"	29"
H. Spoil Discharge Reach	21"	21"
L. Length from 3-Point to Headshaft	24"	24"
M. Transport Angle	48°	48°
Weight with 6" x 36" chain, boom & crumber	650 lbs	
Lift Cylinder Hydraulic Pressure	2000 to 25000 PSI	
Rear PTO RPM Rating	540 RPM	
Rear PTO HP Rating	15 to 30 HP	



### 612 Trencher

Chain reduction drive system. 50,000 double standard, anti-back flex chain.

- 20 to 45 HP Cat. 1 hydrostatic tractor
- Boom lengths from 30" to 60"
- Chain widths from 6" to 12"
- Several tooth options available

Maximum Trenching Depths Based on Trench Width	
6" wide chain	60" deep
8" wide chain	48" deep
10" wide chain	36" deep
12" wide chain	30" deep

Specifications	612
Trench Depth	30", 36", 48", 60"
Trench Width	6", 8", 10", 12"
Trenching Angle	65°
Auger Diameter	24"
Width (overall)	43"
Headshaft Height (auger at grade)	12"
3-point length to headshaft	24"
Spoil Discharge Reach	29"
Transport Height	Varies
Center of Trencher to End of Auger	27"
Trencher Length with 4ft boom	96"

## VIBRATORY PLOW (VP10)



Hydraulic motor includes high-pressure seal and internal valve for extended motor life and performance. Two motor size options for maximum performance for almost any loader.

- 12' turning radius
- Rotating coulter wheel frame mounted
- Optional hydraulic steering assembly
- Optional cable chute blades, reel mount and pulling accessories available

Specifications	VP10
Width (overall)	25"
Length (overall)	36"
Height (overall)	27"
Flow Requirements (GPM)	8 to 14
Operating Pressure (PSI)	1,500 to 3,000
Weight (lbs)	467