



MINI ATTACHMENTS

Selection,
Innovation,
Performance





YOUR PREMIER PARTNER FOR INDUSTRIAL TOOLS AND ATTACHMENTS



Paladin is the trusted name and global leader for quality, productive, and powerful mini, compact, and heavy equipment attachments. Our hydraulic tools and attachments are made to work as hard as the people that use them.

TABLE OF CONTENTS

<p>ADAPTERS</p>  <p>4</p>	<p>AUGER DRIVES</p>  <p>4</p>	<p>ANGLE BROOMS</p>  <p>6</p>	<p>4-IN-1 BUCKETS</p>  <p>NEW</p> <p>7</p>	<p>ROCK BUCKETS</p>  <p>7</p>
<p>DIRT BUCKETS</p>  <p>NEW</p> <p>8</p>	<p>LIGHT MATERIAL BUCKETS</p>  <p>NEW</p> <p>9</p>	<p>DOZER BLADES</p>  <p>10</p>	<p>LEVELER</p>  <p>10</p>	<p>POWER SHOVEL</p>  <p>11</p>
<p>SCRAP GRAPPLES</p>  <p>NEW</p> <p>11</p>	<p>BRUSH GRAPPLES</p>  <p>NEW</p> <p>12</p>	<p>ROOT GRAPPLES</p>  <p>NEW</p> <p>12</p>	<p>ROOT RAKES</p>  <p>13</p>	<p>PALLET FORKS</p>  <p>NEW</p> <p>13</p>
<p>SNOW BLADES</p>  <p>14</p>	<p>SNOW BLOWERS</p>  <p>NEW</p> <p>14</p>	<p>STUMP GRINDERS</p>  <p>15</p>	<p>HARLEY® RAKES</p>  <p>16</p>	<p>TILLERS</p>  <p>16</p>
<p>TRENCHERS</p>  <p>17</p>	<p>TREE FORKS</p>  <p>18</p>	<p>VIBRATORY ROLLERS</p>  <p>VRS36</p> <p>18</p>	<p>VIBRATORY PLOWS</p>  <p>VP10</p> <p>19</p>	

ADAPTERS



Universal Adapter



Weld-on Adapter



Tilt Attach Adapter

FEATURES

- For universal attachment & 3 point
- Weld-on adapters available
- Tilt attach adapters available

UNIVERSAL ATTACHMENT

2003866	ASV/Polaris to Mini Attachment
18193	Bobcat MT50/52 Mini Attachment
19541	New Holland LS120/LS125 to Mini Attachment
2006646	Thomas 85 to Mini Attachment
101160	3-point Cat I to Mini Attachment
103633	Mini Universal to Bobcat MT50/52 Attachments
123794	Mini Skid Steer to Skid Steer Loader Universal Adapter

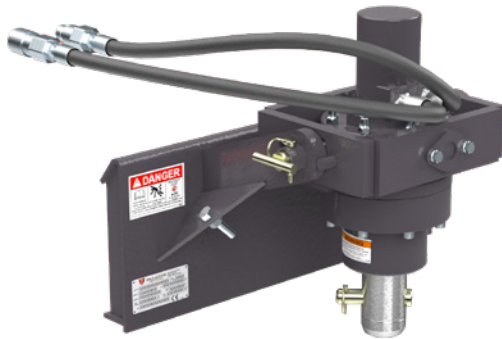
WELD-ON ADAPTER

31629	Universal Hitch
16647	ASV/Polaris
16142	Bobcat MT50/52
17699	Gehl
23973	New Holland LS120/LS125
2006645	Thomas 85

TILT ATTACH ADAPTER

100145	Mini Universal Tilt Attach Includes Hoses & Flat Face Couplers
103246	Bobcat MT50/52 to Mini Universal Mount

AUGER DRIVES



FEATURES

- Two models available, X900 & X1500
- X900 provides speed, X1500 provides high torque
- 2-9/16" round shaft (X900 & X1500 models)
- 2" hex shaft (X1500 model only)
- Over 30 auger bits available to fit your job specifications

SPECIFICATIONS	X900		X1500				
	24452	24759	24453	24861	120276	24674	24760
Maximum Auger Diameter	15"	15"	30"	30"	30"	30"	30"
Minimum Hydraulic Flow	8 GPM	8 GPM	8 GPM	8 GPM	8 GPM	8 GPM	8 GPM
Maximum Hydraulic Flow	16 GPM	16 GPM	16 GPM	16 GPM	16 GPM	16 GPM	16 GPM
Maximum Continuous Operating PSI	3000 PSI	3000 PSI	3000 PSI	3000 PSI	3000 PSI	3000 PSI	3000 PSI
Output Shaft Options	2-9/16" Rnd	2-9/16" Rnd	2-9/16" Rnd	2" Hex	2" Hex	2-9/16" Rnd	2-9/16" Rnd
Mount	CII	SSL	CII	CII	Bobcat	Bobcat	SSL

PENGO™ AUGER BITS

AGGRESSOR®



TRIMAX®



MINI AGGRESSOR®



AGGRESSOR® AUGERS - 3' OAL - 2" HEX

236011	6-AR-36 H-200
236012	9-AR-36 H-200
236013	12-AR-36 H-200
236014	15-AR-36 H-200
236015	18-AR-36 H-200
243160	24-AR-36 H-200
243161	30-AR-36 H-200
243162	36-AR-36 H-200

*Description Format = Diameter-Style-Length (inches) Connection

AGGRESSOR® AUGERS - 3' OAL - 2.56" ROUND

236016	6-AR-36 R-256
236017	9-AR-36 R-256
236018	12-AR-36 R-256
236019	15-AR-36 R-256
236020	18-AR-36 R-256
243163	24-AR-36 R-256
243164	30-AR-36 R-256
243165	36-AR-36 R-256

*Description Format = Diameter-Style-Length (inches) Connection

TRIMAX® AUGERS - 3' OAL - 2" HEX

243166	6-TM-36 H-200
243167	9-TM-36 H-200
243168	12-TM-36 H-200
243169	16-TM-36 H-200
243170	18-TM-36 H-200
243171	24-TM-36 H-200
243172	30-TM-36 H-200
243173	36-TM-36 H-200

*Description Format = Diameter-Style-Length (inches) Connection

TRIMAX® AUGERS - 3' OAL - 2.56" ROUND

243174	6-TM-36 R-256
243175	9-TM-36 R-256
243176	12-TM-36 R-256
243177	16-TM-36 R-256
243178	18-TM-36 R-256
243179	24-TM-36 R-256
243180	30-TM-36 R-256
243181	36-TM-36 R-256

*Description Format = Diameter-Style-Length (inches) Connection

MINI AGGRESSOR® AUGERS - 3' OAL - 2" HEX

243182	6-MA-36 H-200
243183	9-MA-36 H-200
243184	12-MA-36 H-200
243185	15-MA-36 H-200
243186	18-MA-36 H-200

*Description Format = Diameter-Style-Length (inches) Connection

MINI AGGRESSOR® AUGERS - 3' OAL - 2.56" ROUND

243187	6-MA-36 R-256
243188	9-MA-36 R-256
243189	12-MA-36 R-256
243190	15-MA-36 R-256
243191	18-MA-36 R-256

*Description Format = Diameter-Style-Length (inches) Connection

ANGLE BROOMS



FEATURES

- Dethatching lawns, snow removal, cleaning sidewalks, general clean up
- 26" diameter brush heads
- 42", 48" & 60" widths available
- Polypropylene and wire brushes available
- Quick change core

SPECIFICATIONS	22641PM-0961	22641MM-0961	22642PM-0961	22642MM-0961	22647PM-0961
Sweeping Width	42"	42"	42"	42"	48"
Overall Height	28.3"	28.3"	28.3"	28.3"	28.3"
Overall Width	55.6"	55.6"	55.6"	55.6"	61.6"
Overall Length	52.8"	52.8"	52.8"	52.8"	52.8"
Overall Length @ 30° Angle	58.5"	58.5"	58.5"	58.5"	60"
Overall Width @ 30° Angle	57.6"	57.6"	57.6"	57.6"	62.8"
Sweeping Width @ 30° Angle	36.3"	36.3"	36.3"	36.3"	41.5"
Center of Gravity (Horizontal)	26.2"	26.2"	26.2"	26.2"	26.8"
Required Flow	4-8 GPM	4-8 GPM	6-12 GPM	6-12 GPM	4-8 GPM
Bristle Material	Poly	Poly-Wire Mix	Poly	Poly-Wire Mix	Poly
Mount	CII	CII	CII	CII	CII

	22647MM-0961	22648PM-0961	22648MM-0961	22660PM-0961	22660MM-0961
Sweeping Width	48"	48"	48"	60"	60"
Overall Height	28.3"	28.3"	28.3"	28.3"	28.3"
Overall Width	61.6"	61.6"	61.6"	73.6"	73.6"
Overall Length	52.8"	52.8"	52.8"	52.8"	52.8"
Overall Length @ 30° Angle	60"	60"	60"	63"	63"
Overall Width @ 30° Angle	62.8"	62.8"	62.8"	73.2"	73.2"
Sweeping Width @ 30° Angle	41.5"	41.5"	41.5"	52"	52"
Center of Gravity (Horizontal)	26.8"	26.8"	26.8"	27.7"	27.7"
Required Flow	4-8 GPM	6-12 GPM	6-12 GPM	6-12 GPM	6-12 GPM
Bristle Material	Poly-Wire Mix	Poly	Poly-Wire Mix	Poly	Poly-Wire Mix
Mount	CII	CII	CII	CII	CII

4-IN-1 BUCKETS



FEATURES

- Dual hydraulic cylinders
- High dump, dozer blade, grapple, general purpose bucket
- High carbon steel front cutting edge

SPECIFICATIONS	STANDARD DUTY		HEAVY DUTY		
	2008270	233333	233450	233351	111470
Width	42"	48"	54"	54"	60"
Overall Height	19.7"	19.7"	23.8"	23.8"	26.1"
Overall Length	27.7"	27.7"	27.2"	29.9"	34.4"
Clam Opening	18.2"	18.2"	32.5"	32.5"	34.7"
Rated Capacity	5.5 FT ³	6.6 FT ³	8.8 FT ³	8.8 FT ³	12.8 FT ³
Capacity Struck	4.5 FT ³	5.4 FT ³	6.8 FT ³	6.8 FT ³	9.2 FT ³
Bucket Angle	60°	60°	60°	60°	70°
Operating Pressure	1500-3000 PSI	1500-3000 PSI	1500-3000 PSI	1500-3000 PSI	2000-3500 PSI
Weight	250 LBS	281 LBS	313 LBS	354 LBS	450 LBS
Rated Operating Capacity	2500 LBS	2500 LBS	2500 LBS	2500 LBS	2500 LBS
Mount	CII	CII	CII	Bobcat	SSL
CYLINDER SPECIFICATIONS					
Bore	2.0"	2.0"	2.0"	2.0"	2.0"
Stroke	4.0"	4.0"	6.0"	6.0"	7.5"
Rod Diameter	1.13"	1.13"	1.13"	1.13"	1.13"

ROCK BUCKETS



FEATURES

- 1.125" or .75" tine diameter available
- Allows dirt to be sifted removing rocks, bricks, & foreign materials
- Can be used for back dragging & much more
- High strength alloy steel tines

SPECIFICATIONS	19695	19500	118191
Width	42"	42"	48"
Overall Height	15"	15"	15"
Overall Length	25"	25"	25"
Tine Spacing	2"	2"	2"
Tine Diameter	.75"	1.13"	1.13"
Weight	138 LBS	184 LBS	207 LBS
Rated Operating Capacity	1500 LBS	2500 LBS	2500 LBS
Mount	CII	CII	CII

DIRT BUCKETS



STANDARD DUTY



HEAVY DUTY

FEATURES

- Optional Bolt on Edge, Tooth Bar, and Teeth
- Wear resistant high carbon cutter edge standard
- HD Reinforcement Box Structures for increased durability
- 3/16" thick Grade 50 steel body
- Wear bars on the underside

STANDARD DUTY

SPECIFICATIONS	233282	233099	233103	233290	233284	233101	233288
Width	34.5"	36"	42"	48"	36"	42"	48"
Overall Height	18.1"	18.1"	18.1"	18.1"	18.1"	18.1"	18.1"
Depth	30.6"	30.6"	30.6"	30.6"	30.6"	30.6"	30.6"
Rated Capacity	5.8 FT ³	6 FT ³	7.3 FT ³	8.3 FT ³	6 FT ³	7.3 FT ³	8.3 FT ³
Struck	4.8 FT ³	5.0 FT ³	5.9 FT ³	6.8 FT ³	5.0 FT ³	5.9 FT ³	6.8 FT ³
Bucket Angle	60°	60°	60°	60°	60°	60°	60°
Weight	188 LBS	193 LBS	215 LBS	236 LBS	222 LBS	249 LBS	269 LBS
Rated Operating Capacity	1500 LBS	1500 LBS	1500 LBS	1500 LBS	1500 LBS	1500 LBS	1500 LBS
Mount	CII	CII	CII	CII	Bobcat	Bobcat	Bobcat

HEAVY DUTY

SPECIFICATIONS	233110	233115	233123	233263	233111	233119
Width	48"	54"	60"	48"	54"	60"
Overall Height	18.1"	18.1"	18.1"	18.1"	18.1"	18.1"
Depth	35.2"	35.2"	35.2"	34.6"	34.6"	34.6"
Rated Capacity	9.3 FT ³	10.5 FT ³	11.8 FT ³	9.3 FT ³	10.5 FT ³	11.8 FT ³
Struck	7.4 FT ³	8.4 FT ³	9.3 FT ³	7.4 FT ³	8.4 FT ³	9.3 FT ³
Bucket Angle	60°	60°	60°	60°	60°	60°
Weight	303 LBS	325 LBS	346 LBS	267 LBS	289 LBS	311 LBS
Rated Operating Capacity	2500 LBS	2500 LBS	2500 LBS	2500 LBS	2500 LBS	2500 LBS
Mount	SSL	SSL	SSL	CII	CII	CII

CONSUMABLES	34.5"	36"	42"	48"	54"	60"
Bolt on Edge	233093	107156	107157	107158	233268	233269
Bolt on Tooth Bar Kit	119492	120712	2001065	18200	124965	236346
Bolt on Tooth Kit	233266 (4 req'd)	233266 (4 req'd)	233266 (5 req'd)	233266 (5 req'd)	233266 (6 req'd)	233266 (7 req'd)

LIGHT MATERIAL BUCKETS



STANDARD DUTY



HEAVY DUTY

FEATURES

- Optional Bolt on Edge and Teeth
- Wear resistant high carbon cutter edge standard
- HD Reinforcement Box Structures for increased durability
- 3/16" thick Grade 50 steel body
- Wear bars on the underside

STANDARD DUTY

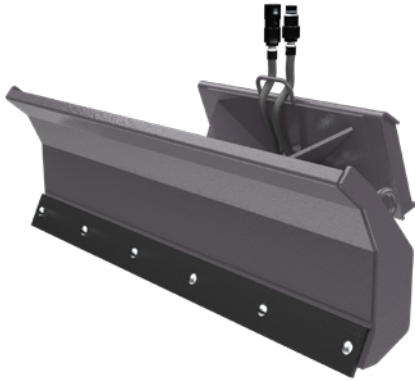
SPECIFICATIONS	233151	233148	233157	233159	233161	233163
Width	36"	42"	48"	36"	42"	48"
Overall Height	27.6"	27.6"	27.6"	27.6"	27.6"	27.6"
Depth	36.4"	36.4"	36.4"	36.1"	36.2"	36.2"
Rated Capacity	11.4 FT ³	13.5 FT ³	15.6 FT ³	11.4 FT ³	13.5 FT ³	15.6 FT ³
Struck	9.3 FT ³	11 FT ³	12.5 FT ³	9.3 FT ³	11 FT ³	12.5 FT ³
Bucket Angle	70°	70°	70°	70°	70°	70°
Weight	244 LBS	269 LBS	293 LBS	273 LBS	303 LBS	325 LBS
Rated Operating Capacity	1500 LBS	1500 LBS	1500 LBS	1500 LBS	1500 LBS	1500 LBS
Mount	CII	CII	CII	Bobcat	Bobcat	Bobcat

HEAVY DUTY

SPECIFICATIONS	233129	233145	233165	236244	236245	236246
Width	48"	54"	48"	54"	60"	68"
Overall Height	27.6"	27.6"	27.6"	27.6"	30.2"	30.2"
Depth	36.7"	36.7"	36.7"	36.7"	39.4"	39.4"
Rated Capacity	15.6 FT ³	17.6 FT ³	15.6 FT ³	17.6 FT ³	23.3 FT ³	27.1 FT ³
Struck	12.5 FT ³	14.1 FT ³	12.5 FT ³	14.1 FT ³	18.5 FT ³	21.4 FT ³
Bucket Angle	70°	70°	70°	70°	70°	70°
Weight	313 LBS	338 LBS	350 LBS	375 LBS	435 LBS	469 LBS
Rated Operating Capacity	2500 LBS	2500 LBS	2500 LBS	2500 LBS	2500 LBS	2500 LBS
Mount	CII	CII	SSL	SSL	SSL	SSL

CONSUMABLES	36"	42"	48"	54"	60"	68"
Bolt on Edge	107156	107157	107158	233268	233269	233281
Bolt on Tooth Kit	233266 (4 req'd)	233266 (5 req'd)	233266 (5 req'd)	233266 (6 req'd)	233266 (7 req'd)	233266 (8 req'd)

DOZER BLADES



FEATURES

- 30° left and right angle
- 6 way blade requires dual remotes or hydraulic kit
- 6° left and right tilt
- Replaceable wear edge

SPECIFICATIONS	2004358	2008100	101776	101777
Overall Width	47"	47"	67"	67"
Overall Height	17"	17"	17"	17"
Overall Length	22"	22"	22"	22"
Angle (left & right)	30°	30°	30°	30°
Width from Center Line to Inside Edge at 30° Angle	23"	23"	31"	31"
Blade Width at 30° Angle	40"	40"	58"	58"
Weight	257 LBS	257 LBS	310 LBS	310 LBS
Hydraulic Couplers	Poppet	Flat Face	Poppet	Flat Face
Mount	CII	CII	CII	CII

OPTIONS (CHOOSE ONE FROM GROUP)	
GROUP 1	
19235	Dual Remote, Flat Face Couplers
100598	Dual Remote, Poppet Couplers
GROUP 2	
19219	Hydraulic Valve, Flat Face Couplers
19230	Hydraulic Valve, Poppet Couplers
GROUP 3	
19577	Hydraulic/Electric Valve, Flat Face Couplers
100539	Hydraulic/Electric Valve, Poppet Couplers

CONSUMABLES	47"	67"
Bolt on Edge	2005076	101460

LEVELER



FEATURES

- Grades and backfills rough ground
- Carrying platform for brush, trees, blocks, etc.

SPECIFICATIONS	2000857
Overall Width	48"
Overall Length	36"
Mount	CII

POWER SHOVEL



FEATURES

- No hydraulics or electrical required
- Great for removing and transplanting shrubs, bushes, & small trees
- Pick your own mount

SPECIFICATIONS	2000867	125437
Overall Width	25"	25"
Overall Height	25"	25"
Overall Length	47"	47"
Weight	165 LBS	165 LBS
Mount	CII	Bobcat

SCRAP GRAPPLES



FEATURES

- 36", 42", 48 & 54" widths on select models
- Hydraulic grapple with guarded cylinder
- Optional Bolt-on cutter bar assembly
- 1,500 to 3,000 operating pressure (psi)
- High strength Grade 50 steel throughout

SPECIFICATIONS	107147	235913	235907	235870
Width	36"	42"	48"	54"
Overall Height	25"	25"	25"	25"
Overall Length	31"	31"	31"	31"
Grapple Opening	29"	29"	29"	29"
Weight	281 LBS	300 LBS	329 LBS	349 LBS
Rated Operating Capacity	2500 LBS	2500 LBS	2500 LBS	2500 LBS
Mount	CII	CII	CII	CII

SPECIFICATIONS	235877	235916	235894	235883	235882	235871
Width	36"	42"	48"	54"	48"	54"
Overall Height	25"	25"	25"	25"	25"	25"
Overall Length	31"	31"	31"	31"	31"	31"
Grapple Opening	29"	29"	29"	29"	29"	29"
Weight	316 LBS	340 LBS	368 LBS	388 LBS	366 LBS	385 LBS
Rated Operating Capacity	2500 LBS	2500 LBS	2500 LBS	2500 LBS	2500 LBS	2500 LBS
Mount	Bobcat	Bobcat	Bobcat	Bobcat	SSL	SSL

CONSUMABLES	36"	42"	48"	54"
Bolt on Edge	107156	107157	107158	233268

BRUSH GRAPPLES

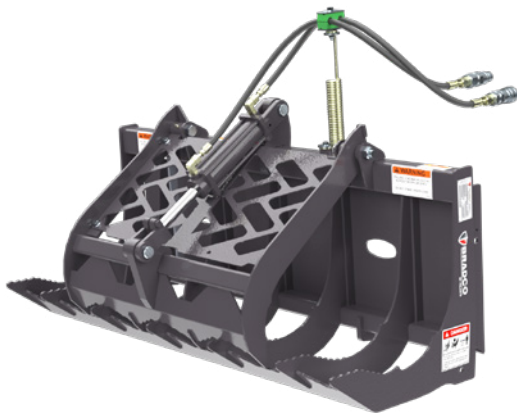


FEATURES

- 42", 48", and 54" widths available
- Hydraulic grapple with guarded cylinder
- 1,500 to 3,000 operating pressure (psi)
- High strength grade 50 steel throughout

SPECIFICATIONS	235962	235965	235967	235963	235964	235966	235902	235904
Width	42"	48"	54"	42"	48"	54"	48"	54"
Overall Height	26"	26"	26"	26"	26"	26"	26"	26"
Overall Length	31"	31"	31"	31"	31"	31"	31"	31"
Grapple Opening	29"	29"	29"	29"	29"	29"	29"	29"
Weight	256 LBS	275 LBS	283 LBS	299 LBS	318 LBS	326 LBS	318 LBS	325 LBS
Rated Operating Capacity	2500 LBS	2500 LBS	2500 LBS	2500 LBS	2500 LBS	2500 LBS	2500 LBS	2500 LBS
Mount	CII	CII	CII	Bobcat	Bobcat	Bobcat	SSL	SSL

ROOT GRAPPLES



FEATURES

- Brush guard cylinder protection
- AR400 bucket tine construction
- High strength steel throughout
- 1,500 to 3,000 operating pressure (psi)

SPECIFICATIONS	124429	235928	124412	124429-0128	235930	235842	235917	235845
Width	42"	48"	53"	42"	48"	53"	48"	53"
Overall Height	28.4"	28.4"	28.4"	28.4"	28.4"	28.4"	28.4"	28.4"
Overall Length	26.8"	26.8"	26.8"	26.8"	26.8"	26.8"	26.8"	26.8"
Grapple Opening	32"	32"	32"	32"	32"	32"	32"	32"
Tine Spacing	8.5"	8.5"	8.5"	8.5"	8.5"	8.5"	8.5"	8.5"
Weight	268 LBS	276 LBS	282 LBS	217 LBS	225 LBS	227 LBS	264 LBS	270 LBS
Rated Operating Capacity	2500 LBS	2500 LBS	2500 LBS	2500 LBS	2500 LBS	2500 LBS	2500 LBS	2500 LBS
Mount	CII	CII	CII	Bobcat	Bobcat	Bobcat	SSL	SSL

ROOT RAKES

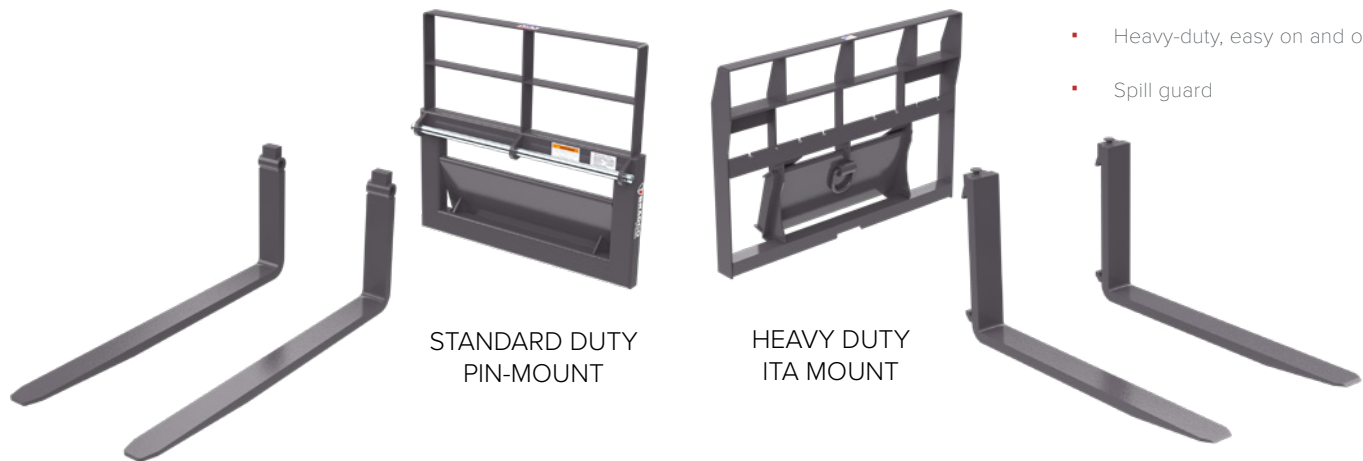


SPECIFICATIONS	120837
Width	42"
Overall Height	28.14"
Overall Length	22.40"
Grapple Width	38.88"
Grapple Opening	32.50"
Tine Spacing	9.88" - 10.88"
Weight	316 LBS
Rated Operating Capacity	2500 LBS
Mount	CII

FEATURES

- Built-in Scarifier teeth to tear through roots and loosen compacted soil
- Built with high-strength Grade 50 steel for durability and long-lasting performance
- Optimized Tine Spacing: 10" tine spacing efficiently gathers and removes roots, rocks, and debris while allowing soil to pass through
- Reinforced Tines made from 1/2" thick steel to withstand tough conditions and heavy loads
- The curved rake design enhances the ability to dig and gather materials effectively
- The open frame design provides excellent visibility for the operator, improving precision and safety
- Cylinder Guards Protect the hydraulic cylinders from debris and damage, ensuring longer service life

PALLET FORKS



FEATURES

- Adjustable tine widths
- Heavy-duty, easy on and off
- Spill guard

SPECIFICATIONS	STANDARD DUTY		HEAVY DUTY	
	PIN-MOUNT		ITA MOUNT	
Fork Frame Part Number	233247	233248	123311	233250
Overall Width	30"	30"	40"	40"
Overall Height	29"	29"	31"	31"
Weight	162 LBS	183 LBS	210 LBS	223 LBS
Rated Operating Capacity	1500 LBS	1500 LBS	2500 LBS	2500 LBS
Mount	CII	Bobcat	CII	Bobcat
FORK TINES	13653	13654	102028	102030
Dimensions	1.18" x 3.15" x 32" (Pair)	1.18" x 3.15" x 42" (Pair)	1.38" x 4" x 42" (Pair)	1.38" x 4" x 48" (Pair)
Rated Operating Capacity	1500 LBS	1500 LBS	2500 LBS	2500 LBS

SNOW BLADES



FEATURES

- Hydraulically or manually angles 30° in either direction
- Reversible, replaceable wear edge, optional rubber edge
- Adjustable skid shoes
- Spring-loaded trip mechanism
- 7-gauge steel blade

SPECIFICATIONS	11448M-0961	11448-0961	11448-0002	11448-0128
Width	48"	48"	48"	48"
Style	Manual Angle	Hydraulic Angle	Hydraulic Angle	Hydraulic Angle
Height	23"	23"	23"	23"
Cutting Width @ 30° Angle	41.5"	41.5"	41.5"	41.5"
Weight	420 LBS	425 LBS	437 LBS	460 LBS
Mount	CII	CII	ASV/Polaris	Bobcat

CONSUMABLES	
118937	Rubber Edge Kit
118936	Steel Edge Kit

CONSUMABLES	
FFC10014	Manual Angle Kit
FFC10049	Hydraulic Angle Kit

SNOW BLOWERS



FEATURES

- The new 3D floating hitch offers side to side, up and down, and front to back motion to allow the snow blower to have the smoothest operating experience when working on uneven surfaces
- The 3D floating hitch also allows for an uninterrupted scrape offering a cleaner surface which means less salt is required
- The dual articulating chute offering unprecedented user control on where to place the snow with the 270 degrees of motion and ability to blow snow from as close as 3 feet or up to 45 feet
- The skid skis offer toolless adjustment which enable users to quickly and easily transition from gravel to pavement

SPECIFICATIONS	25048B-0961
Cutting Width	48"
Cutting Height	27.5"
Overall Length	46"
Overall Width	53"
Maximum Overall Height	71"
Minimum Overall Height	60"
Auger Diameter	15"
Flow	8-15 GPM
Weight	820 LBS
Hydraulic Pressure	3500 PSI
Mount	CII

CONSUMABLES	
28-11300-48	Steel Edge Kit
28-11301-48	Polyurethane Edge Kit
28-11312	Steel Wear Shoe Kit
28-11313	Soft Wear Shoe Kit

STUMP GRINDERS



FEATURES

- Bearing mounted cutting wheel provides smooth, trouble-free operation
- Adjustable wheel cutting angle allows optimal cutting for any type of stump
- Two motor size options

SPECIFICATIONS	101865*	101866*
Overall Width	25"	25"
Overall Height	29"	29"
Overall Length	36"	36"
Below Ground Depth	7"	7"
Angle	45"	45"
Wheel Diameter	18"	18"
Hydraulic Flow	8-11 GPM	10-14 GPM
Weight (with mount & teeth)	325 LBS	325 LBS

*Does not include Mount, Hoses, or Wheel

MOUNTS (ONE REQUIRED)

101868	Universal Mounting Assembly
104373	ASV RC30 Mounting Assembly
104374	Bobcat MT50/52 Mounting Assembly
104375	C&P 027 Mounting Assembly
116575	Gehl Mounting Assembly

HYDRAULIC HOSE KITS (ONE REQUIRED)

101874	Flat Face Couplers
101875	Poppet Couplers

TEETH (ONE REQUIRED)

101876	Wheel Assembly With Bolt-On Teeth
101877	Wheel Assembly With Square Teeth

HARLEY RAKES



FEATURES

- Direct drive motor is embedded within frame and drum providing optimal protection from dirt and debris.
- Adjustable barrier crafted from eco-friendly recycled aircraft rubber
- Specially shaped and placed carbide teeth ensure the best possible seedbed
- Easily removable endplates
- Dual independently adjustable gauge wheels
- Multi-position gates

SPECIFICATIONS	22748M-0961	22748H-0961
Style	Manual Angle	Hydraulic Angle
Roller Width	48"	48"
Overall Length	49.1"	49.1"
Overall Width	55.4"	55.4"
Raking Width (full angle)	45.2"	45.2"
Angled Roll	20°	20°
Required Flow	8-15 GPM	8-15 GPM
Weight	365 LBS	380 LBS
Mount	CII	CII

TILLERS

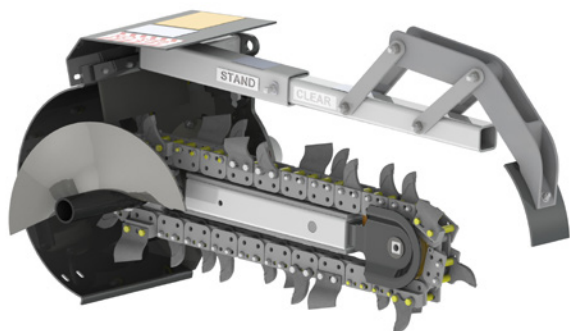


FEATURES

- Replaceable and reversible tines
- Adjustable depth guide
- 8 to 15 GPM recommended
- 1,500 to 3,000 operating pressure (PSI)

SPECIFICATIONS	2008000	2004807	104569
Max Tilling Width	40"	40"	48"
Overall Width	51"	51"	59"
Overall Length	26"	26"	26"
Overall Height	22"	22"	22"
Tilling Depth	5"	5"	5"
Weight	320 LBS	320 LBS	357 LBS
RPM @ 8 GPM	120 RPM	120 RPM	120 RPM
Hydraulic Couplers	Flat Face	Poppet	Flat Face
Mount	CII	CII	CII

TRENCHERS



FEATURES

- Operating pressure 2,000 to 3,000 (psi)
- GPM requirements 6-10 or 10-16
- Standard tooth and 70/30 shark tooth combo available

TRENCHER BASE & MOTOR_HOSES & FLAT FACE COUPLERS

SPECIFICATIONS	18392_18558*	18393_18558*
Trench Depth w/ Auger @ 65° Digging Angle	36"	36"
Chain Widths Available	4.5", 6", 8"	4.5", 6", 8"
Recommended Trenching Angle	65°	65°
Headshaft Height	10"	10"
Overall Trencher Length	65"	65"
Overall Trencher Width	42"	42"
Overall Trencher Height	28"	28"
Spoil Discharge Reach	24"	24"
Weight	294 LBS	270 LBS
Flow	6-10 GPM	10-16 GPM

*Does not include Mount, Boom & Crumber, or Chain

BOOM & CRUMBER_CHAIN

	18403_89823	18403_89826
Trenching Depth	36"	36"
Chain Width	6"	6"
Tooth Configuration	Type 1: General Purpose "TES"	Type 2: Compacted Soils "70/30"
Weight	84 LBS	84 LBS

MOUNTS

89952	Mini-loader, Universal
15495	Mini-loader, Universal Offset
16287	Bobcat MT50/MT52/453/463

Soil Type 1: General Purpose // Tooth Configuration: "TES" - Cup-Style Tooth at Every Station

A tooth configuration that is for generally good, normal digging conditions. Light to moderately compacted soils with generally balanced sand and loam content. Also works well in soils with some loose gravel. *In soils with higher clay content, recommend to remove up to 50% of teeth to reduce sticking and gumming.

Soil Type 2: Compacted Soils // Tooth Configuration: "70/30" - Combination 70% Shark Teeth, 30% Cup-Style Teeth

Configured for compacted soils, lightly frozen ground, baked hard clay, shale, and rocky soils. Shark teeth provide a cutting action while cup teeth remove debris from the trench.

TREE FORKS



FEATURES

- 33" length tines
- Up to 27" maximum hydraulic adjustable width
- Hydraulic controlled cylinder

SPECIFICATIONS	2000382	2008130
Overall Width	25"	25"
Overall Height	13"	13"
Overall Length	47"	47"
Left Fork Movement Range	38°	38°
Distance Between Forks (closed)	4"	4"
Operating Pressure	1500-3000 PSI	1500-3000 PSI
Weight	145 LBS	145 LBS
Hydraulic Couplers	Flat Face	Poppet
Mount	CII	CII

VIBRATORY ROLLERS



FEATURES

- 36" smooth drum
- Use on sand, gravel, soils, crushed stone and other aggregates
- Steel drum has an adjustable steel scraper blade

SPECIFICATIONS	109100	109101
Overall Width	41.47"	41.47"
Drum Width	36"	36"
Overall Height	21.5"	21.5"
Overall Length	34.4"	34.4"
Drum Diameter	20"	20"
Operating Weight	840 LBS	840 LBS
Dynamic Force	2488 LBS	2488 LBS
Vibrating Speed	2000 VPM	2000 VPM
Vibrating Weight	507 LBS	507 LBS
Drum Oscillation/Tilt	15°	15°
Hydraulic Motor Flow	6-9 GPM	10-14 GPM
Mount	CII	CII

VIBRATORY FLOWS



FEATURES

- 12' turning radius
- Rotating coulter wheel frame mounted
- Optional hydraulic steering assembly
- Optional cable chute blades, reel mount, and pulling accessories available

SPECIFICATIONS	19733*	19734*
Overall Width	24.5"	24.5"
Overall Height	27.1"	27.1"
Overall Length	35.8"	35.8"
Flow Requirements	8-11 GPM	10-14 GPM
Operating Pressure	1500-2500 PSI	1500-2500 PSI
Weight	510 LBS	510 LBS

*Does not include Hydraulic Kit, Mounting Kit, or Plow Blade

HYDRAULIC KITS (ONE REQUIRED)	
19380	Without Steering, .50" Poppet Couplers
19381	Without Steering, .50" Flat Face Couplers
19382	With Steering, .50" Poppet Couplers*
19383	With Steering, .50" Flat Face Couplers*

*Skid-Steer must have two sets of auxiliary hydraulics

PLOW BLADES (ONE REQUIRED)	
.375" (3/8") Wide Blade	
19325	.375" Blade 20°, 1" Clevis, 6" To 12" Depth
19441	.375" Blade 30°, 1" Clevis, 6" To 12" Depth
18690	.375" Blade 20°, 1" Clevis, 12" To 18" Depth
2007030	.375" Blade 30°, 1" Clevis, 12" To 18" Depth
.50" (1/2") Wide Chute Blade	
19442	.50" Chute Blade 20°, 6" To 12" Depth
19443	.50" Chute Blade 30°, 6" To 12" Depth
19444	.50" Chute Blade 20°, 12" To 18" Depth
19445	.50" Chute Blade 30°, 12" To 18" Depth
109214	.50" Chute Blade 20°, 20" To 24" Depth
112256	.50" Chute Blade 30°, 18" To 24" Depth

MOUNTING KITS (ONE REQUIRED)	
19384	CII
101827	3-point Category I Mounting Kit
19389	ASV/Polaris Mounting Kit

OPTIONS	
17754	Pull Bullet Assembly, 2.5" Dia
2001171	Cable Pull Grip, 1" To 1.24" Cable
100435	Cable Pull Grip, .75" To .99" Dia.
100436	Cable Pull Grip, 1.25" To 1.49" Dia.
18740	Pipe Bullet Assembly, 1" To 1.5" Pipe
19085	Cable Reel Mount, 24" Max. Dia. Reel
18739	Hydraulic Steering Assembly
19732	Steering Conversion Kit, .50" Poppet Couplers
19735	Steering Conversion Kit, .50" Flat Face Couplers

**SELECTION.
INNOVATION.
PERFORMANCE.**



PALADIN®