



PALADIN
BRADCO

330 TRENCHER

FOR PTO HYDRAUSTATIC TRACTORS



Features

- Category 1ASAE S217.12 standard, 3-point mount for 15-30 HP hydrostatic tractors
- Maintenance free PTO shaft drive with automatic slip clutch for overload protection
- 14" discharge auger
- 30" & 36" digging depth available to fit most applications
- Trenching widths: 3", 4.5" 6" & 8"
- 38,000 lb 1.654" anti-back flex-chain for tooth pattern versatility to support many soil types and conditions
- Optional cup tooth chain and 70/30 combo chain

The **Bradco® 330 Trencher** by Paladin has a maintenance free PTO shaft drive with automatic slip clutch for overload protection. Paladin Attachments is your single source for high quality attachments for skid steers, compact tool carriers, and excavators used for material handling, soil preparation, construction, and site preparation.

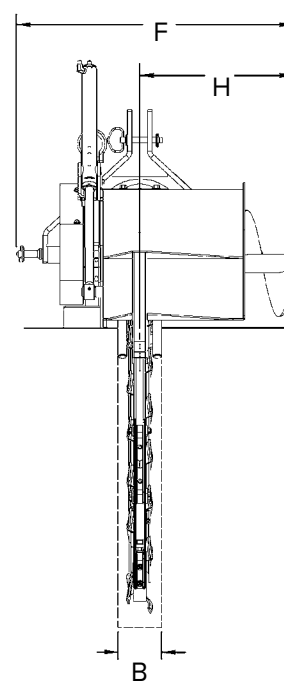
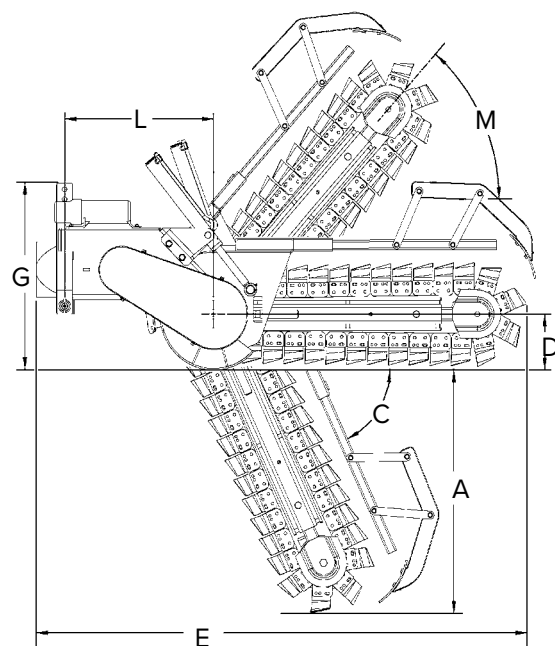


PALADIN

www.paladinattachments.com | 833.723.1843

SPECIFICATIONS

A. Trench Depth with Auger at 65° Digging Angle	30"	36"
B. Chain Width	3.0"	3.0"
	4.5"	4.5"
	6.0"	6.0"
	8.0"	8.0"
C. Recommended Trenching Angle	65°	65°
D. Headshaft Height (Auger Touching Ground)	8.5"	8.5"
E. Overall Length	73"	79"
F. Overall Width	38"	38"
G. Overall Height	29"	29"
H. Spoil Discharge Reach	21"	21"
L. Length from 3-point to Headshaft (center of gravity)	24"	24"
M. Transport Angle	48°	48°
Weight with 6" x 36" chain, boom & crumber	650 lbs	
Hydraulic System		
Operating Hydraulic System	2000 to 25000 PSI	
Rear PTO RPM Rating	540 RPM	
Rear PTO HP Rating	15 to 30 HP	



The 330 Trencher requires rear hydraulics to run the machine. Comes with light/medium duty boom and crumber with replaceable wear strips. Easy installation and operation.

Additional Features

- Compatible with model 615 chains
- ASAE S278.6 standard quick attach compatible
- Support stand is standard