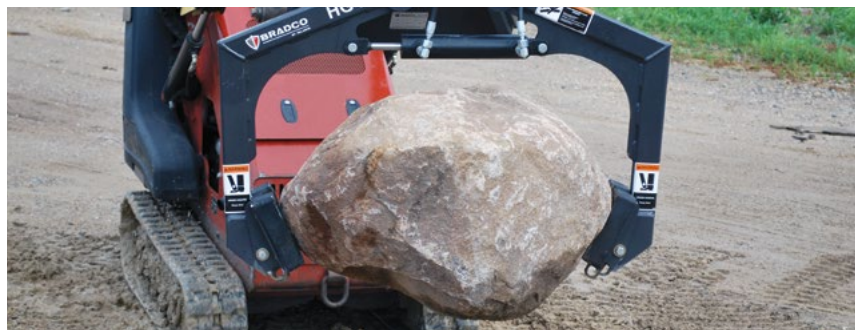


## Features

- Accommodates pavers/materials of different shapes and sizes automatically
- A single cylinder powers two grapple arms with rubber “gripping pads”
- Self adjusting grapple arms do not require an additional person for positioning

The **Bradco® Hardscape Grapple** by Paladin® eliminates the need to manually move hardscape materials such as concrete paver sections, concrete blocks, small boulders, and granite/limestone/concrete steps around the supply yard and job site.





- A cylinder check valve prevents loss of clamping force even if the machine's hydraulic power is lost



- Easily reach over the other sections on pallet to get to the one you need



- Accommodates granite or concrete steps up to 48"



- Automatically adjusts the position of the clamping arms to ensure a good grasp of the material



- A simple stand utilizing two steel tubes has been integrated into the attachment that stores neatly into the quick attach assembly when not in use

SPECIFICATIONS	
Order Code	23548-0022
Weight	175 lbs
Cylinder	2.5" x 1.25" x 7.5"
Pad Size	5" x 7.75"
Grip Range	18-48"
Plunge Depth	13" (min)
Max Reach	14"
Lift Capacity	1,500 lbs
Clamp Force	1,525 lbs