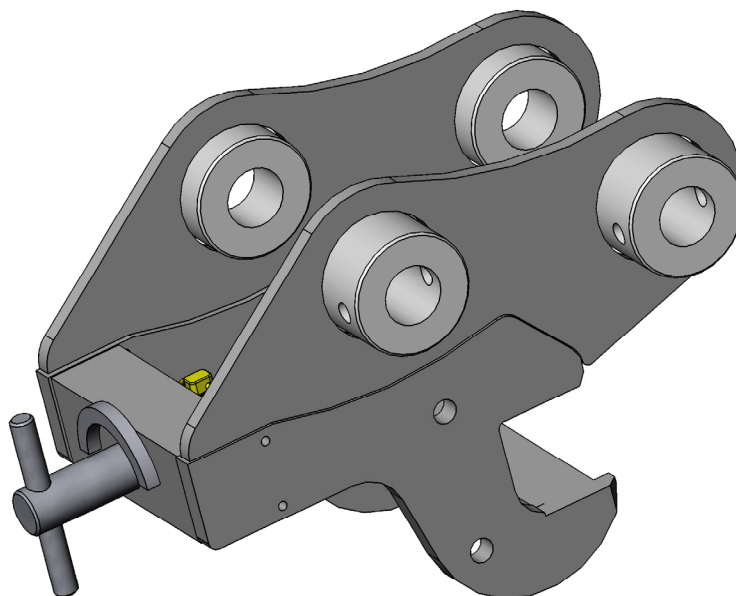




OPERATOR'S MANUAL

QUICK HITCH™ MANUAL COUPLER

**FOR
EXCAVATOR & BACKHOE
(WAIN-ROY STYLE INTERCHANGE)**



SERIAL NUMBER: _____

MODEL NUMBER: _____

Manual Number: OM70R
Date: October 2019
Rev.

TABLE OF CONTENTS

PREFACE	5
SAFETY PRECAUTIONS	
Safety Statements	6
General Safety Precautions.....	6-8
Equipment Safety Precautions	9-11
INSTALLATION	
Attaching Coupler to Prime Mover.....	13
Coupler Removal	13
OPERATION	
Intended Use	14
Locking and Unlocking Attachment.....	15-16
Demolition Attachments and Work Tools	17
Lifting with Coupler	18
Storage	19
Lift & Tie Down Points.....	20
Transporting.....	20
MAINTENANCE	
Routine Maintenance.....	21
SPECIFICATIONS	
Bolt Torque Specification	22
PARTS / WARRANTY	23

**THIS PAGE
IS INTENTIONALLY
BLANK**

PREFACE

GENERAL COMMENTS

Congratulations on the purchase of your new C&P product! This product was carefully designed and manufactured to give you many years of dependable service. Only minor maintenance (such as cleaning and lubricating) is required to keep it in top working condition. Be sure to observe all maintenance procedures and safety precautions in this manual and on any safety decals located on the product and on any equipment on which the attachment is mounted.

This manual has been designed to help you do a better, safer job. Read this manual carefully and become familiar with its contents.

WARNING!  **Never let anyone operate this unit without reading the "Safety Precautions" and "Operating Instructions" sections of this manual. Always choose hard, level ground to park the vehicle on and set the brake so the unit cannot roll.**

Unless noted otherwise, right and left sides are determined from the operator's control position when facing the attachment.

NOTE: The illustrations and data used in this manual were current (according to the information available to us) at the time of printing, however, we reserve the right to redesign and change the attachment as may be necessary without notification.

BEFORE OPERATION

The primary responsibility for safety with this equipment falls to the operator. Make sure the equipment is operated only by trained individuals that have read and understand this manual. If there is any portion of this manual or function you do not understand, contact your local authorized dealer or the manufacturer. Keep this manual available for reference. Provide this manual to any new owners and/or operators.

SAFETY ALERT SYMBOL



This is the "Safety Alert Symbol" used by this industry. This symbol is used to warn of possible injury. Be sure to read all warnings carefully. They are included for your safety and for the safety of others working with you.

SERVICE

Use only manufacturer replacement parts. Substitute parts may not meet the required standards.

Record the model and serial number of your unit on the cover of this manual. The parts department needs this information to insure that you receive the correct parts.

SOUND AND VIBRATION

Sound pressure levels and vibration data for this attachment are influenced by many different parameters; some items are listed below (not inclusive):

- prime mover type, age condition, with or without cab enclosure and configuration
- operator training, behavior and stress level
- job site organization, working material condition and environment

Based on the uncertainty of the prime mover, operator and job site it is not possible to get precise machine and operator sound pressure levels or vibration levels for this attachment.

NOTE: A list of all Paladin Patents can be found at <http://www.paladinattachments.com/patents.asp>.

SAFETY STATEMENTS



THIS SYMBOL BY ITSELF OR WITH A WARNING WORD THROUGHOUT THIS MANUAL IS USED TO CALL YOUR ATTENTION TO INSTRUCTIONS INVOLVING YOUR PERSONAL SAFETY OR THE SAFETY OF OTHERS. FAILURE TO FOLLOW THESE INSTRUCTIONS CAN RESULT IN INJURY OR DEATH.



DANGER

THIS SIGNAL WORD INDICATES A HAZARDOUS SITUATION WHICH, IF NOT AVOIDED, WILL RESULT IN DEATH OR SERIOUS INJURY.



WARNING

THIS SIGNAL WORD INDICATES A HAZARDOUS SITUATION WHICH, IF NOT AVOIDED, COULD RESULT IN DEATH OR SERIOUS INJURY.



CAUTION

THIS SIGNAL WORD INDICATES A HAZARDOUS SITUATION WHICH, IF NOT AVOIDED, COULD RESULT IN MINOR OR MODERATE INJURY.

NOTICE

NOTICE IS USED TO ADDRESS PRACTICES NOT RELATED TO PHYSICAL INJURY.

GENERAL SAFETY PRECAUTIONS



WARNING! READ MANUAL PRIOR TO INSTALLATION

Improper installation, operation, or maintenance of this equipment could result in serious injury or death. Operators and maintenance personnel should read this manual, as well as all manuals related to this equipment and the prime mover thoroughly before beginning installation, operation, or maintenance. **FOLLOW ALL SAFETY INSTRUCTIONS IN THIS MANUAL AND THE PRIME MOVER'S MANUAL(S).**



READ AND UNDERSTAND ALL SAFETY STATEMENTS

Read all safety decals and safety statements in all manuals prior to operating or working on this equipment. Know and obey all OSHA regulations, local laws, and other professional guidelines for your operation. Know and follow good work practices when assembling, maintaining, repairing, mounting, removing, or operating this equipment.



KNOW YOUR EQUIPMENT

Know your equipment's capabilities, dimensions, and operations before operating. Visually inspect your equipment before you start, and never operate equipment that is not in proper working order with all safety devices intact. Check all hardware to ensure it is tight. Make certain that all locking pins, latches, and connection devices are properly installed and secured. Remove and replace any damaged, fatigued, or excessively worn parts. Make certain all safety decals are in place and are legible. Keep decals clean, and replace them if they become worn or hard to read.

GENERAL SAFETY PRECAUTIONS

WARNING!



PROTECT AGAINST FLYING DEBRIS

Always wear proper safety glasses, goggles, or a face shield when driving pins in or out, or when any operation causes dust, flying debris, or any other hazardous material.

WARNING!



LOWER OR SUPPORT RAISED EQUIPMENT

Do not work under raised booms without supporting them. Do not use support material made of concrete blocks, logs, buckets, barrels, or any other material that could suddenly collapse or shift positions. Make sure support material is solid, not decayed, warped, twisted, or tapered. Lower booms to ground level or on blocks. Lower booms and attachments to the ground before leaving the cab or operator's station.

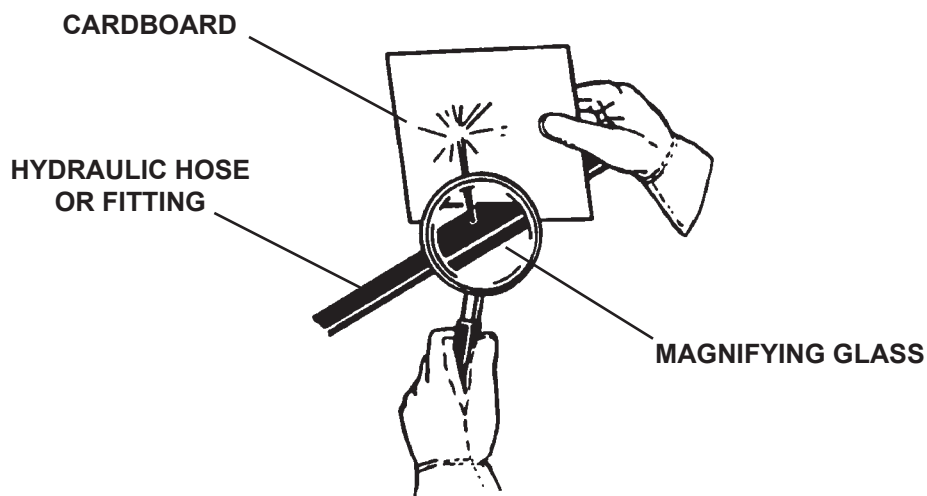
WARNING!



USE CARE WITH HYDRAULIC FLUID PRESSURE

Hydraulic fluid under pressure can penetrate the skin and cause serious injury or death. Hydraulic leaks under pressure may not be visible. Before connecting or disconnecting hydraulic hoses, read your prime mover's operator's manual for detailed instructions on connecting and disconnecting hydraulic hoses or fittings.

- Keep unprotected body parts, such as face, eyes, and arms as far away as possible from a suspected leak. Flesh injected with hydraulic fluid may develop gangrene or other permanent disabilities.
- If injured by injected fluid, see a doctor at once. If your doctor is not familiar with this type of injury, ask him to research it immediately to determine proper treatment.
- Wear safety glasses, protective clothing, and use a piece of cardboard or wood when searching for hydraulic leaks. **DO NOT USE YOUR HANDS!** **SEE ILLUSTRATION.**



GENERAL SAFETY PRECAUTIONS

WARNING!



DO NOT MODIFY MACHINE OR ATTACHMENTS

Modifications may weaken the integrity of the attachment and may impair the function, safety, life, and performance of the attachment. When making repairs, use only the manufacturer's genuine parts, following authorized instructions. Other parts may be substandard in fit and quality. Never modify any ROPS (Roll Over Protective Structure) or FOPS (Falling Object Protective Structure) equipment or device. Any modifications must be authorized in writing by the manufacturer.

WARNING!



SAFELY MAINTAIN AND REPAIR EQUIPMENT

- Do not wear loose clothing or any accessories that can catch in moving parts. If you have long hair, cover or secure it so that it does not become entangled in the equipment.
- Work on a level surface in a well-lit area.
- Use properly grounded electrical outlets and tools.
- Use the correct tools for the job at hand. Make sure they are in good condition for the task required.
- Wear the protective equipment specified by the tool manufacturer.



SAFELY OPERATE EQUIPMENT

Do not operate equipment until you are completely trained by a qualified operator in how to use the controls, know its capabilities, dimensions, and all safety requirements. See your machine's manual for these instructions.

- Keep all step plates, grab bars, pedals, and controls free of dirt, grease, debris, and oil.
- Never allow anyone to be around the equipment when it is operating.
- Do not allow riders on the attachment or the prime mover.
- Do not operate the equipment from anywhere other than the correct operator's position.
- Never leave equipment unattended with the engine running, or with this attachment in a raised position.
- Do not alter or remove any safety feature from the prime mover or this attachment.
- Know your work site safety rules as well as traffic rules and flow. When in doubt on any safety issue, contact your supervisor or safety coordinator for an explanation.

WARNING!



CALIFORNIA PROPOSITION 65 WARNING

This product may contain a chemical known to the state of California to cause cancer, or birth defects or other reproductive harm. www.P65Warnings.ca.gov

EQUIPMENT SAFETY PRECAUTIONS

WARNING!



KNOW WHERE UTILITIES ARE

Observe overhead electrical and other utility lines. Be sure equipment will clear them. When digging, call your local utilities for location of buried utility lines, gas, water, and sewer, as well as any other hazard you may encounter.

WARNING!



EXPOSURE TO RESPIRABLE CRYSTALLINE SILICA DUST ALONG WITH OTHER HAZARDOUS DUSTS MAY CAUSE SERIOUS OR FATAL RESPIRATORY DISEASE.

It is recommended to use dust suppression, dust collection and if necessary personal protective equipment during the operation of any attachment that may cause high levels of dust.

WARNING!



REMOVE PAINT BEFORE WELDING OR HEATING

Hazardous fumes/dust can be generated when paint is heated by welding, soldering or using a torch. Do all work outside or in a well ventilated area and dispose of paint and solvent properly. Remove paint before welding or heating.

When sanding or grinding paint, avoid breathing the dust. Wear an approved respirator. If you use solvent or paint stripper, remove stripper with soap and water before welding. Remove solvent or paint stripper containers and other flammable material from area. Allow fumes to disperse at least 15 minutes before welding or heating.

WARNING!



END OF LIFE DISPOSAL

At the completion of the useful life of the unit, drain all fluids and dismantle by separating the different materials (rubber, steel, plastic, etc.). Follow all federal, state and local regulations for recycling and disposal of the fluid and components.



OPERATING THE ATTACHMENT

- Never use your attachment for a work platform or personnel carrier
- Do not exceed the lifting capacity of your prime mover.
- Operate only from the operator's station.
- When operating on slopes, drive up and down, not across. Avoid steep hillside operation, which could cause the prime mover to overturn.
- Reduce speed when driving over rough terrain, on a slope, or turning, to avoid overturning the vehicle.
- An operator must not use drugs or alcohol, which can change his or her alertness or coordination. An operator taking prescription or over-the-counter drugs should seek medical advice on whether or not he or she can safely operate equipment.
- Never lift, move, or swing a load or attachment over anyone.
- Before exiting the prime mover, lower the attachment to the ground, apply the brakes, turn off the prime mover's engine and remove the key

WARNING!



KEEP ATTACHMENT CLOSE TO THE GROUND DURING LOCK AND UNLOCK OPERATIONS.

Attachment can drop without warning if not properly secured. Visually check the coupler is securely locked on attachment. Follow procedures described in this manual for checking fit between coupler and attachment. Failure to do so could result in serious injury or death.

EQUIPMENT SAFETY PRECAUTIONS

WARNING!



CLEAR COUPLER OF DEBRIS BEFORE OPERATING

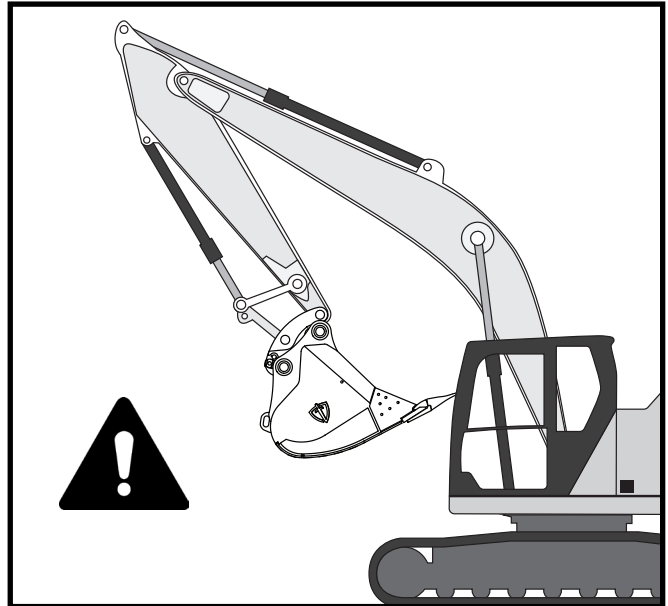
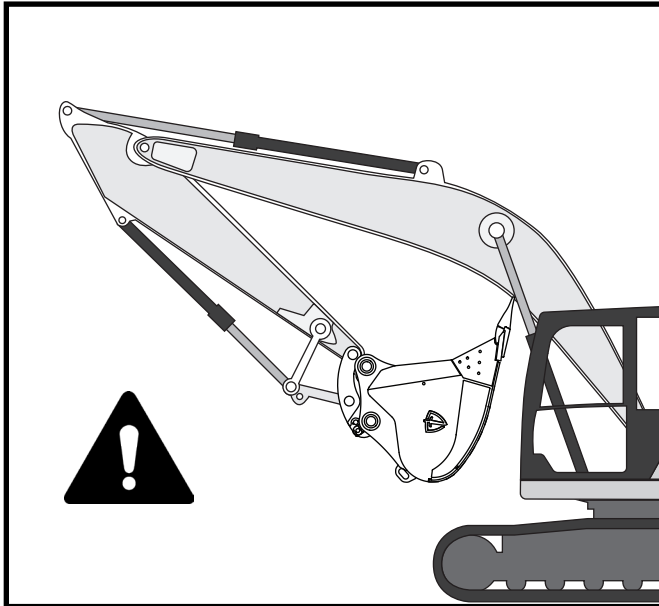
Make sure coupler is free of debris prior to operation. Debris can interfere with the locking mechanism not allowing it to function properly.



UNDERSTAND EFFECTIVE REACH OF ATTACHMENTS

The coupler increases the distance between the dipper arm and the attachment. The effective “reach” of the attachment will be increased.

Depending on the specific coupler and attachment combination, it may be possible for the attachment to come in contact with the upper structure of the excavator (cab, boom, cylinders, etc.). The operator should familiarize himself with any potential interference locations prior to use.



EQUIPMENT SAFETY PRECAUTIONS

WARNING!



LIFT EYE USAGE

Consult your prime mover manufacturers specifications for lifting procedures and capacities. Incorrect applications and uses and failure to follow these instructions may result in severe injury or death.

In order to use the lift eye correctly and safely the attachment must first be removed from the coupler. Not only is this the safe method, it also increases the lifting capacity of the prime mover. When an attachment is in use with the coupler, the chain, cable or other lifting device can contact it and may cause interference, damage or potential for unexpected release.

The lifting device must always be removed when changing attachments. If the device is in the area of the coupler or attachment during coupling, it may cause an incomplete locking of the coupler to the attachment or damage to the coupler and/or the attachment.



TRANSPORTING THE ATTACHMENT

- Travel only with the attachment in a safe transport position to prevent uncontrolled movement. Drive slowly over rough ground and on slopes.
- When transporting on a trailer: Secure attachment at recommended tie down locations using tie down accessories that are capable of maintaining attachment stability.
- When driving on public roads use safety lights, reflectors, Slow Moving Vehicle signs etc., to prevent accidents. Check local government regulations that may affect you.
- Do not drive close to ditches, excavations, etc., cave in could result.
- Do not smoke when refueling the prime mover. Allow room in the fuel tank for expansion. Wipe up any spilled fuel. Secure cap tightly when done.



MEASURE TRAVEL HEIGHT AND LENGTH PRIOR TO TRANSPORTING

The overall travel height and/or length of the prime mover will be increased if the coupler and attachment are installed. Do not rely on original prime mover specifications to determine overall dimensions. Actual dimensions will be affected by specific coupler and attachment combination.

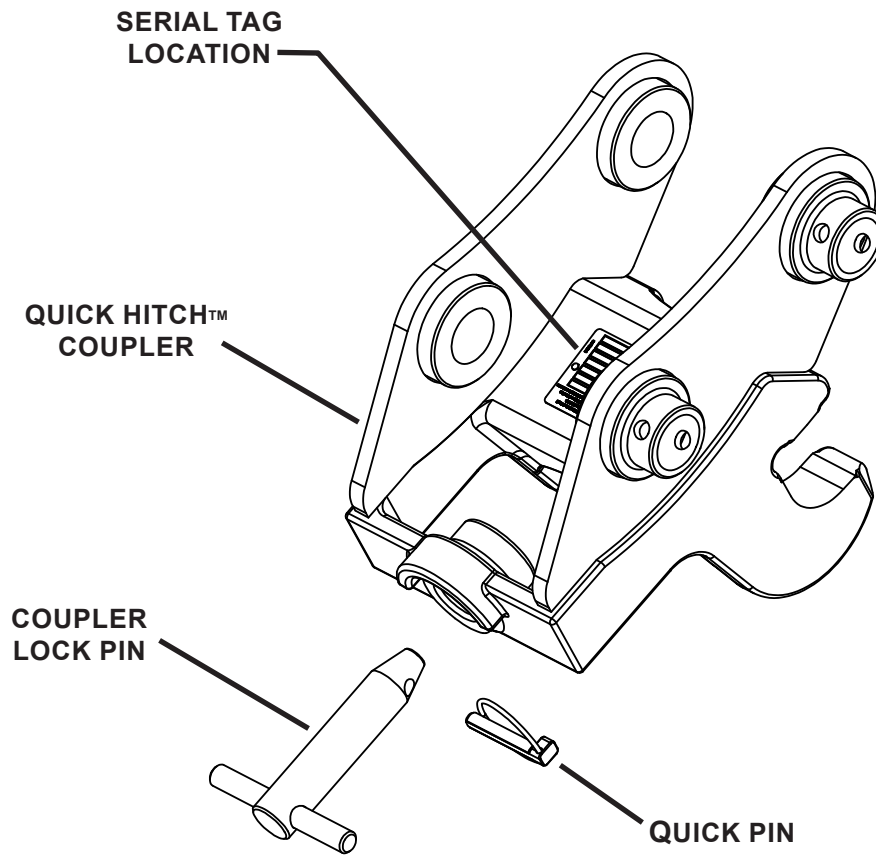


MAINTAINING THE ATTACHMENT

- Before performing maintenance lower the attachment to the ground, apply the brakes, turn off the engine and remove the key.
- Never perform any work on the attachment unless you are authorized and qualified to do so. Always read the operator service manuals before any repair is made. After completing maintenance or repair, check for correct functioning of the attachment. If not functioning properly, always tag “DO NOT OPERATE” until all problems are corrected.
- Never work under a raised attachment.

INSTALLATION

NOMENCLATURE

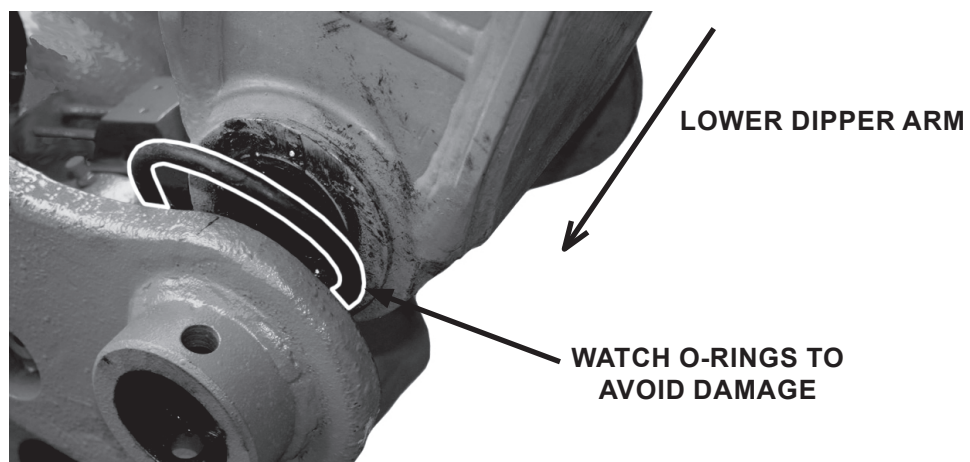


INSTALLATION

ATTACHING COUPLER TO PRIME MOVER

1. Position coupler on ground with hook pointing toward the prime mover.
2. Align the coupler with the end of the dipper arm and install seals and shims where required. Lightly grease the O-ring seals and place over the edge of the coupler as shown. See Figure #1.
3. Slowly lower the dipper arm into place while making sure the O-ring seals do not enter the pin hole or get damaged. Align the holes in the coupler with the holes in the dipper arm. See Figure #1.

FIGURE #1



4. Install the original OEM bucket pin through the coupler and dipper arm holes and install the locking bolt and nuts.
5. Slowly lower the link arm into place while making sure the O-ring seals do not enter the pin hole or get damaged. Align the holes in the coupler with the holes in the link arm.
6. Install the original OEM bucket pin through the coupler and link arm holes and install the locking bolt and nuts.

COUPLER REMOVAL

1. Position coupler on the ground.
2. Remove the coupler from the prime mover by reversing the installation procedure.

OPERATION

INTENDED USE

The Quick Hitch™ coupler is designed as a tool to provide a safe and efficient way for the operator to attach, detach and interchange between different attachments with ease. It can accommodate a variety of attachments, including demolition attachments, rippers and hammers. Use in any other way is considered contrary to the intended use.

The coupler must **ONLY** be used in accordance with the instructions in this manual. Paladin will not be liable for any accidents or damage which result from bad working practices. The guidelines below are applicable to all Quick Hitch™ couplers.

Some examples of misuse include, but are not limited to, the following:

AVOID Incorrect use of coupler to pick up and move attachments, for example:

- Moving attachments by front pin only. See Figure #1.
- Using hook only to lift attachments.

ALWAYS ensure the coupler is fully engaged and locked on the attachment even if only moving the attachment from one location to another.

AVOID incorrect use of coupler to pick up items using chains or slings, for example:

- Using the hook to pick up items with chains. See Figure #2.
- Using the coupler body to pick up items with chains. See Figure #3.

FIGURE #1

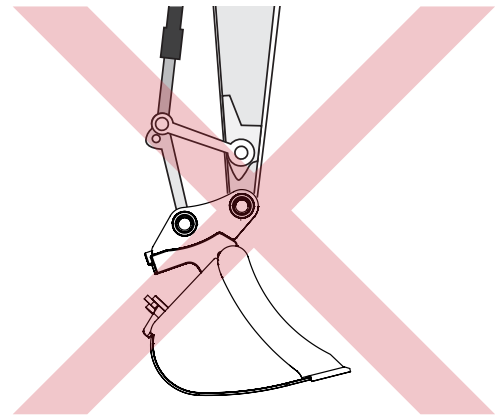


FIGURE #2

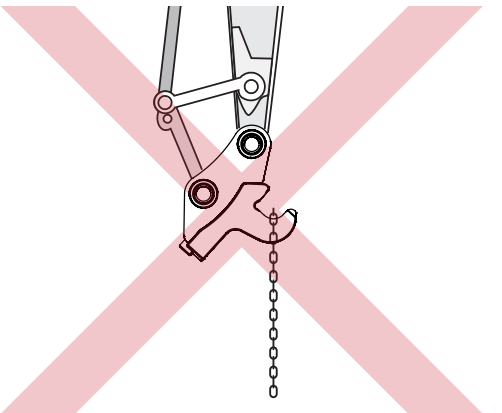
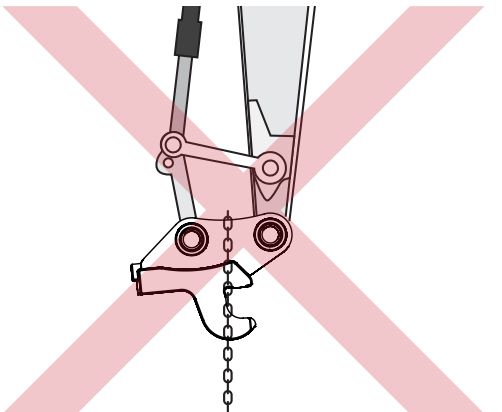


FIGURE #3



OPERATION

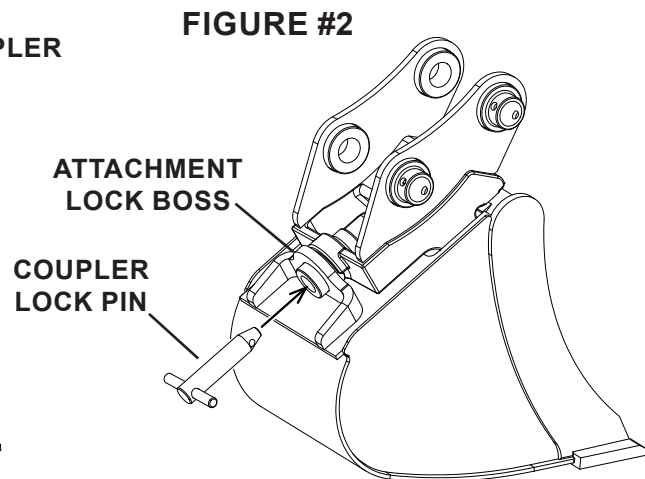
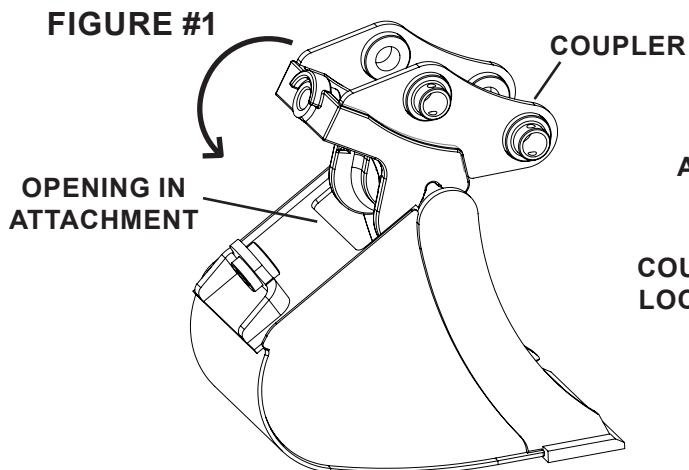
WARNING! KEEP ATTACHMENT CLOSE TO THE GROUND DURING LOCK AND UNLOCK OPERATIONS.



Attachment can drop without warning if not properly secured. Visually check the coupler is securely locked on attachment. Failure to do so could result in serious injury or death. Read all safety precautions before operating equipment.

LOCKING ATTACHMENT

1. Place the coupler above the attachment.
2. Lower hook of coupler through opening in attachment and engage the top rounded portion of the attachment. See Figure #1.
3. Extend bucket cylinder of prime mover to rotate the coupler until the hole in the back portion of the coupler aligns with the lock boss on the attachment. See Figure #1.
4. Insert coupler lock pin through aligned holes and secure using quick pin. See Figure #2.
5. With the coupler securely attached, the attachment is ready for operation.



OPERATION

UNLOCKING ATTACHMENT

WARNING! Do not try to release or change attachment near any persons or in any areas that may result in an accident or injury occurring. The coupler lock pin should be installed at all times, except while changing attachments.



1. Lower the attachment to the ground. If using an hydraulic attachment, see section below before performing next steps.
2. With attachment on the ground, remove the coupler lock pin.
3. Retract bucket cylinder of prime mover to uncurl the coupler until coupler hook disengages the attachment .
4. Lift the coupler clear of the attachment. The coupler is now safely disengaged.

UNLOCKING HYDRAULIC ATTACHMENTS

- Before exiting the prime mover, lower attachment to the ground, apply the brakes, turn off the prime mover's engine and remove the key.
- Follow prime mover operator's manuals to relieve pressure in the hydraulic lines.
- Disconnect hydraulic lines and install dust caps and plugs to prevent contaminants from entering the hydraulic system.
- Follow steps 2 - 4 above to disengage coupler from attachment.

OPERATION

WORK TOOLS

The Quick Hitch™ coupler is designed to allow the easy changeover of Wain-Roy style buckets and work tools. No modifications are required to the buckets or the prime mover. The coupler can operate a wide variety of work tools, such as hydraulic breakers, in a range of applications.

CAUTION! Do not use any tool that is not in the correct weight class specified by the prime mover manufacturer.

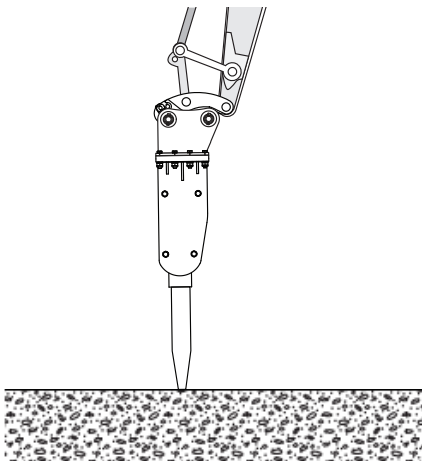


DEMOLITION ATTACHMENTS & WORK TOOLS

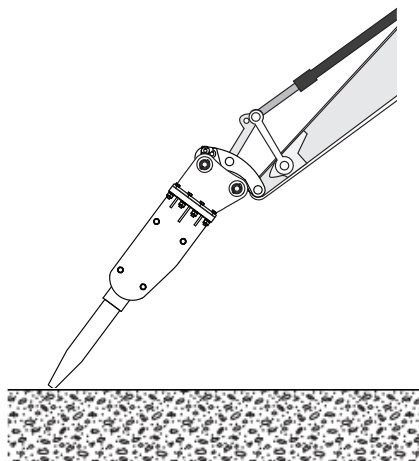
The Quick Hitch™ coupler can be used with hydraulic breakers and work tools of appropriate interchange and weight. DO NOT use a tool which is beyond the tonnage class specified.

Always use breakers in the vertical position whenever possible. NEVER use the breaker as a lever. When used with a breaker the coupler should be inspected frequently.

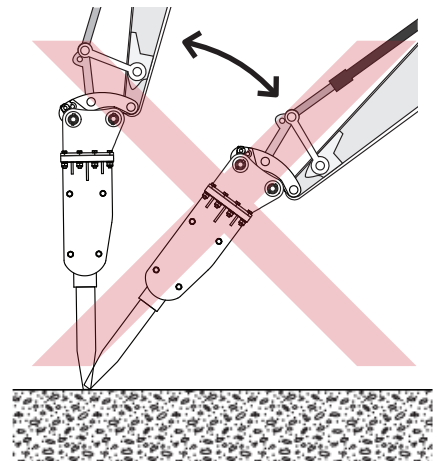
WARNING! Do not use the coupler with a hydraulic breaker for long periods without a periodic inspection of all working parts. If the breaker needs to be used continuously for a long period, it is recommended that it be mounted directly to the machine. The coupler has not been designed to work with prolonged excessive vibration.



OPERATE BREAKER IN THE VERTICAL POSITION.



USE CAUTION WHEN OPERATING A BREAKER NOT IN THE VERTICAL POSITION.



NEVER USE THE BREAKER AS A LEVER.

NOTICE! Do not use coupler with a mechanical style pulverizer. Damage to the coupler may result which will void warranty. Mount pulverizer directly to the prime mover.

OPERATION

LIFTING WITH COUPLER

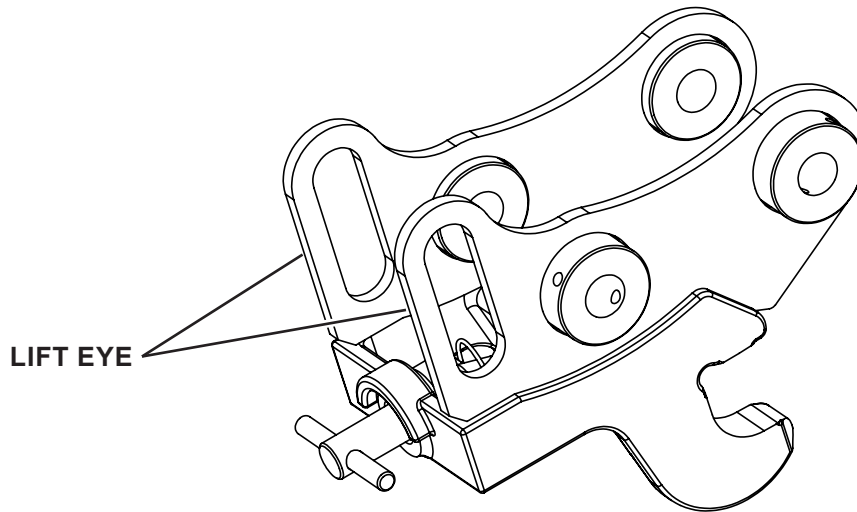
WARNING! Always use correctly rated shackle and lifting devices. Never use worn, damaged or undersized lifting equipment.



If your coupler is designed with a certified lift eye for lifting and placing material, consult your prime mover specifications for lifting procedures and capabilities. In order to use the lift eye, correctly and safely, the attachment must be removed. With an attachment installed the chain, cable or other lifting device can contact the attachment and cause interference, damage or unexpected release.

Any lifting device must be removed when changing attachments.

Check the lifting capacity of the prime mover before lifting and do not exceed. Lift with the coupler in a vertical position.



OPERATION

STORAGE

The following storage procedure will help you to keep your product in top condition. It will also help you get off to a good start the next time your attachment is needed. We therefore strongly recommend that you take the extra time to follow these procedures whenever your unit will not be used for an extended period of time.

- Clean the unit thoroughly, removing all mud, dirt, and grease.
- Inspect for visible signs of wear, breakage, or damage. Order any parts required and make the necessary repairs to avoid delays upon removal from storage.
- Store unit in a dry and protected place. Leaving the unit outside will materially shorten its life.

Additional Precautions for Long Term Storage:

- Touch up all unpainted surfaces with paint to prevent rust.

REMOVAL FROM STORAGE

- Wash unit and replace any damaged and/or missing parts.

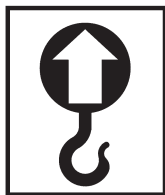
OPERATION

LIFT POINTS

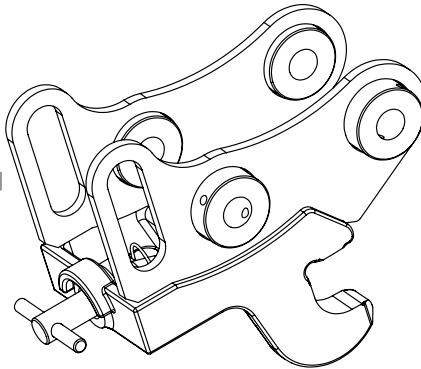
Lifting points are identified by lifting decals where required. Lifting at other points is unsafe and can damage attachment. Do not attach lifting accessories around cylinders or in any way that may damage hoses or hydraulic components.

- Attach lifting accessories to unit at recommended lifting points.
- Bring lifting accessories together to a central lifting point.
- Lift gradually, maintaining the equilibrium of the unit.

WARNING! Use lifting accessories (chains, slings, ropes, shackles and etc.) that are capable of supporting the size and weight of your attachment. Secure all lifting accessories in such a way to prevent unintended disengagement. Failure to do so could result in the attachment falling and causing serious personal injury or death.



COUPLER WITH
LIFT EYE SHOWN



TIE DOWN POINTS

Tie down points are identified by tie down decals where required. Securing to trailer at other points is unsafe and can damage attachment. Do not attach tie down accessories around cylinders or in any way that may damage hoses or hydraulic components.

- Attach tie down accessories to unit as recommended.
- Check unit stability before transporting.

WARNING! Verify that all tie down accessories (chains, slings, ropes, shackles and etc.) are capable of maintaining attachment stability during transporting and are attached in such a way to prevent unintended disengagement or shifting of the unit. Failure to do so could result in serious personal injury or death.



TRANSPORTING

Follow all local government regulations that may apply along with recommended tie down points and any equipment safety precautions at the front of this handbook when transporting your attachment.

WARNING! The overall travel height and/or length of the prime mover will be increased if the coupler and attachment are installed. Do not rely on original prime mover specifications to determine overall dimensions. Actual dimensions will be affected by specific coupler and attachment combination.



MAINTENANCE

GENERAL INFORMATION

Regular maintenance is the key to long equipment life and safe operation. Maintenance requirements have been reduced to an absolute minimum. However it is very important that these maintenance functions be performed as described below.

Procedure	Every 8 Hours (Daily)
Check for missing or loose hardware. Replace or tighten as necessary. See Bolt Torque Specifications	✓
Check coupler for worn parts or cracks. (If cracks exist in coupler frame or welds, remove coupler from prime mover and contact Paladin Customer Service.)	✓
Check that mounting pins and pin locking hardware are secure.	✓

BOLT TORQUE SPECIFICATION

GENERAL TORQUE SPECIFICATION TABLES

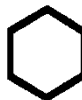
Use the following charts when determining bolt torque specifications, when special torques are not given. Always use grade 5 or better when replacing bolts.

SAE BOLT TORQUE SPECIFICATIONS




Note: The following torque values are for use with extreme pressure lubricants, plating or hard washer applications. Increase torque 15% when using hardware that is unplated and either dry or lubricated with engine oil.

Bolt Size		SAE GRADE 5 TORQUE				SAE GRADE 8 TORQUE				Bolt head identification marks as per grade. NOTE: Manufacturing Marks Will Vary
		Ft-lbs		Newton-Meter		Ft-lbs		Newton-Meter		
Inches	mm	UNC	UNF	UNC	UNF	UNC	UNF	UNC	UNF	
1/4	6,35	8	9	11	12	10	13	14	18	
5/16	7,94	14	17	19	23	20	25	27	34	
3/8	9,53	30	36	41	49	38	46	52	62	
7/16	11,11	46	54	62	73	60	71	81	96	
1/2	12,70	68	82	92	111	94	112	127	152	
9/16	14,29	94	112	127	152	136	163	184	221	
5/8	15,88	128	153	174	207	187	224	254	304	
3/4	19,05	230	275	312	373	323	395	438	536	
7/8	22,23	340	408	461	553	510	612	691	830	
1	25,40	493	592	668	803	765	918	1037	1245	
1-1/8	25,58	680	748	922	1014	1088	1224	1475	1660	
1-1/4	31,75	952	1054	1291	1429	1547	1700	2097	2305	
1-3/8	34,93	1241	1428	1683	1936	2023	2312	2743	3135	
1-1/2	38,10	1649	1870	2236	2535	2686	3026	3642	4103	




Grade 2



Grade 5






Grade 8



METRIC BOLT TORQUE SPECIFICATIONS

NOTE: The following torque values are for use with metric hardware that is unplated and either dry or lubricated with engine oil. Reduce torque 15% when using hardware that has extreme pressure lubricants, plating or hard washer applications.

Bolt head identification marks as per grade.		
		

Bolt Size	Grade No.	Pitch (mm)	Ft-lbs	Newton-Meter	Pitch (mm)	Ft-lbs	Newton-Meter
M6	5.6	1,0	3.6-5.8	4.9-7.9	-	-	-
	8.8		5.8-4	7.9-12.7		-	-
	10.9		7.2-10	9.8-13.6		-	-
M8	5.6	1,25	7.2-14	9.8-19	1,0	12-17	16,3-23
	8.8		17-22	23-29,8		19-27	25,7-36,6
	10.9		20-26	27,1-35,2		22-31	29,8-42
M10	5.6	1,5	20-25	27,1-33,9	1,25	20-29	27,1-39,3
	8.8		34-40	46,1-54,2		35-47	47,4-63,7
	10.9		38-46	51,5-62,3		40-52	54,2-70,5
M12	5.6	1,75	28-34	37,9-46,1	1,25	31-41	42-55,6
	8.8		51-59	69,1-79,9		56-68	75,9-92,1
	10.9		57-66	77,2-89,4		62-75	84-101,6
M14	5.6	2,0	49-56	66,4-75,9	1,5	52-64	70,5-86,7
	8.8		81-93	109,8-126		90-106	122-143,6
	10.9		96-109	130,1-147,7		107-124	145-168
M16	5.6	2,0	67-77	90,8-104,3	1,5	69-83	93,5-112,5
	8.8		116-130	157,2-176,2		120-138	162,6-187
	10.9		129-145	174,8-196,5		140-158	189,7-214,1
M18	5.6	2,0	88-100	119,2-136	1,5	100-117	136-158,5
	8.8		150-168	203,3-227,6		177-199	239,8-269,6
	10.9		175-194	237,1-262,9		202-231	273,7-313
M20	5.6	2,5	108-130	146,3-176,2	1,5	132-150	178,9-203,3
	8.8		186-205	252-277,8		206-242	279,1-327,9
	10.9		213-249	288,6-337,4		246-289	333,3-391,6

PARTS

In order to provide you with the most UP-TO-DATE part information, parts for this attachment are being moved to our website at www.paladinattachments.com/Manuals. Please use these diagrams and parts lists to locate replacement parts.

When servicing your attachment, remember to use only original manufacturer replacement parts. Substitute parts may not meet the standards required for safe, dependable operation.

To facilitate parts ordering when contacting the factory, please have the product control number (PCN or C/N) or model and serial number of your product ready to ensure that you receive the correct parts for your specific attachment.

The product control number, model and serial number for your attachment should be recorded in the space provided on the cover of this manual. This information may be obtained from the serial number identification plate located on your attachment.

NOTE: Most daily and emergency parts orders (in stock) received by 12:00 P.M. (Eastern Standard Time) will be shipped the same day.

SERVICE DEPARTMENT

(330) 734-3000

(800) 428-2538

For Fax and E-mail Orders

PHASales@paladinattachments.com

(330) 734-3018

WARRANTY

In order to provide you with the most UP-TO-DATE Warranty information, Paladin Warranty Statement and Warranty Procedures along with Warranty Registration and Claim Forms have been moved to our website at www.paladinattachments.com.