



OPERATOR'S AND PARTS MANUAL

SILAGE DEFACER

**FOR
RTFL**



SERIAL NUMBER: _____

MODEL NUMBER: _____

Manual Number: 76807

Part Number: 76807

Rev. 4 August 2018

TABLE OF CONTENTS

| | |
|--|--------------|
| PREFACE..... | 3 |
| SAFETY PRECAUTIONS | 4-8 |
| SAFETY STATEMENTS | 4 |
| GENERAL SAFETY PRECAUTIONS..... | 5-6 |
| EQUIPMENT SAFETY PRECAUTIONS | 7-8 |
| INSTALLATION AND OPERATION | 9-10 |
| ATTACHING AND DETACHING SILAGE DEFACER | 9 |
| OPERATING SILAGE DEFACER..... | 9 |
| TROUBLESHOOTING | 10 |
| MAINTENANCE AND SERVICE..... | 11-12 |
| GENERAL INFORMATION..... | 11 |
| DAILY | 11 |
| MONTHLY OR EVERY 40 HOURS..... | 12 |
| CHAIN ADJUSTMENT | 12 |
| LUBRICATION..... | 12 |
| DECAL IDENTIFICATION AND REPLACEMENT | 12 |
| BOLT TORQUE..... | 13 |
| STORAGE..... | 14 |
| LIMITED WARRANTY | 15 |
| PARTS | |
| SILAGE DEFACER ASSEMBLY #12364 | 18-21 |
| SILAGE DEFACER ASSEMBLY #12425 | 22-25 |
| SILAGE DEFACER ASSEMBLY #12686 | 26-29 |
| SILAGE DEFACER ASSEMBLY #12745 | 30-33 |
| SILAGE DEFACER ASSEMBLY #12805 | 34-37 |
| SILAGE DEFACER ASSEMBLY #12871 | 38-41 |
| SILAGE DEFACER ASSEMBLY #12894 | 42-45 |

FOREWORD

Although Bradco has various silage defacers available, we are continually designing new sizes and mountings. If your combination is not listed, please contact the factory. We have extensive mounting information available to generate the product you need.

Below is a listing of the silage defacers that are currently available. See the "Parts" section of this manual for the assemblies "Shown".

| DESCRIPTION & MOUNT | ASSEMBLY # |
|---|-------------------|
| BOBCAT | |
| Silage Defacer for Telehandler - Bobcat (Shown) | 12894 |
| CATERPILLAR | |
| Silage Defacer for Telehandler, Tractor Loader, or Wheel Loader - CAT IT/TH (Shown) | 12425 |
| Silage Defacer for Wheel Loader - CAT IT/TH Only 6 Foot Extension (Shown) | 12805 |
| JCB | |
| Silage Defacer for Telehandler & Tractor Loader - JCB Q-Fit (Shown) | 12364 |
| JOHN DEERE | |
| Silage Defacer for Wheel Loader - John Deere 444H With JRB Coupler (Shown) | 12745 |
| Silage Defacer for Wheel Loader - John Deere 244J Only 4 Foot Extension (Shown) | 12871 |
| MANITOU | |
| Silage Defacer for Telehandler - Manitou (Shown) | 12686 |
| NEW HOLLAND | |
| Silage Defacer for Telehandler & Tractor Loader - New Holland Q-Fit (Shown) | 12364 |

PREFACE

GENERAL COMMENTS

Congratulations on the purchase of your new attachment! This product was carefully designed and manufactured to give you many years of dependable service. Only minor maintenance (such as cleaning and lubricating) is required to keep it in top working condition. Be sure to observe all maintenance procedures and safety precautions in this manual and on any safety decals located on the product and on any equipment on which the attachment is mounted.

This manual has been designed to help you do a better, safer job. Read this manual carefully and become familiar with its contents.

WARNING! Never let anyone operate this unit without reading the "Safety Precautions" and "Operating Instructions" sections of this manual.



Always choose hard, level ground to park the vehicle on and set the brake so the unit cannot roll.

Unless noted otherwise, right and left sides are determined from the operator's control position when facing the attachment.

NOTE: The illustrations and data used in this manual were current (according to the information available to us) at the time of printing, however, we reserve the right to redesign and change the attachment as may be necessary without notification.

BEFORE OPERATION

The primary responsibility for safety with this equipment falls to the operator. Make sure the equipment is operated only by trained individuals that have read and understand this manual. If there is any portion of this manual or function you do not understand, contact your local authorized dealer or the manufacturer to obtain further assistance. Keep this manual available for reference. Provide the manual to any new owners and/or operators.

SAFETY ALERT SYMBOL



This is the "Safety Alert Symbol" used by this industry. This symbol is used to warn of possible injury. Be sure to read all warnings carefully. They are included for your safety and for the safety of others working with you.

SERVICE

Use only manufacturer replacement parts. Substitute parts may not meet the required standards.

Record the model and serial number of your unit on the cover of this manual. The parts department needs this information to insure that you receive the correct parts.

SOUND AND VIBRATION

Sound pressure levels and vibration data for this attachment are influenced by many different parameters: some items are listed below (not inclusive):

- prime mover type, age, condition, with or without cab enclosure and configuration
- operator training, behavior, stress level
- job site organization, working material condition, environment

Based on the uncertainty of the prime mover, operator, and job site, it is not possible to get precise machine and operator sound pressure levels or vibration levels for this attachment.

NOTE: A list of all Paladin Patents can be found at <http://www.paladinattachments.com/patents.asp>.

M-934 10-22-13-5

SAFETY STATEMENTS



THIS SYMBOL BY ITSELF OR WITH A WARNING WORD THROUGHOUT THIS MANUAL IS USED TO CALL YOUR ATTENTION TO INSTRUCTIONS INVOLVING YOUR PERSONAL SAFETY OR THE SAFETY OF OTHERS. FAILURE TO FOLLOW THESE INSTRUCTIONS CAN RESULT IN INJURY OR DEATH.



DANGER

THIS SIGNAL WORD INDICATES A HAZARDOUS SITUATION WHICH, IF NOT AVOIDED, WILL RESULT IN DEATH OR SERIOUS INJURY.



WARNING

THIS SIGNAL WORD INDICATES A HAZARDOUS SITUATION WHICH, IF NOT AVOIDED, COULD RESULT IN DEATH OR SERIOUS INJURY.



CAUTION

THIS SIGNAL WORD INDICATES A HAZARDOUS SITUATION WHICH, IF NOT AVOIDED, COULD RESULT IN MINOR OR MODERATE INJURY.

NOTICE

NOTICE IS USED TO ADDRESS PRACTICES NOT RELATED TO PHYSICAL INJURY.

GENERAL SAFETY PRECAUTIONS

WARNING!



READ MANUAL PRIOR TO INSTALLATION

Improper installation, operation, or maintenance of this equipment could result in serious injury or death. Operators and maintenance personnel should read this manual, as well as all manuals related to this equipment and the prime mover thoroughly before beginning installation, operation, or maintenance. **FOLLOW ALL SAFETY INSTRUCTIONS IN THIS MANUAL AND THE PRIME MOVER'S MANUAL(S).**



READ AND UNDERSTAND ALL SAFETY STATEMENTS

Read all safety decals and safety statements in all manuals prior to operating or working on this equipment. Know and obey all OSHA regulations, local laws, and other professional guidelines for your operation. Know and follow good work practices when assembling, maintaining, repairing, mounting, removing, or operating this equipment.



KNOW YOUR EQUIPMENT

Know your equipment's capabilities, dimensions, and operations before operating. Visually inspect your equipment before you start, and never operate equipment that is not in proper working order with all safety devices intact. Check all hardware to ensure it is tight. Make certain that all locking pins, latches, and connection devices are properly installed and secured. Remove and replace any damaged, fatigued, or excessively worn parts. Make certain all safety decals are in place and are legible. Keep decals clean, and replace them if they become worn or hard to read.

GENERAL SAFETY PRECAUTIONS

WARNING!



PROTECT AGAINST FLYING DEBRIS

Always wear proper safety glasses, goggles, or a face shield when driving pins in or out, or when any operation causes dust, flying debris, or any other hazardous material.

WARNING!



LOWER OR SUPPORT RAISED EQUIPMENT

Do not work under raised booms without supporting them. Do not use support material made of concrete blocks, logs, buckets, barrels, or any other material that could suddenly collapse or shift positions. Make sure support material is solid, not decayed, warped, twisted, or tapered. Lower booms to ground level or on blocks. Lower booms and attachments to the ground before leaving the cab or operator's station.

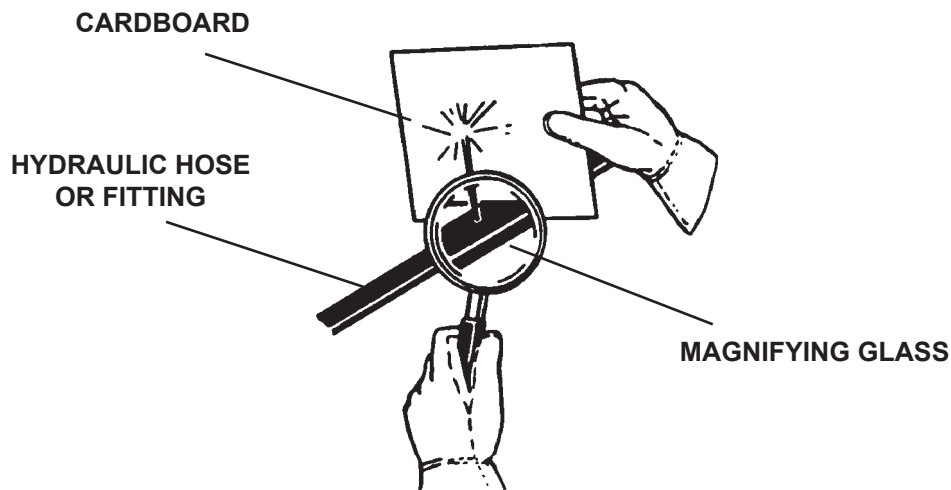
WARNING!



USE CARE WITH HYDRAULIC FLUID PRESSURE

Hydraulic fluid under pressure can penetrate the skin and cause serious injury or death. Hydraulic leaks under pressure may not be visible. Before connecting or disconnecting hydraulic hoses, read your prime mover's operator's manual for detailed instructions on connecting and disconnecting hydraulic hoses or fittings.

- Keep unprotected body parts, such as face, eyes, and arms as far away as possible from a suspected leak. Flesh injected with hydraulic fluid may develop gangrene or other permanent disabilities.
- If injured by injected fluid, see a doctor at once. If your doctor is not familiar with this type of injury, ask him or her to research it immediately to determine proper treatment.
- Wear safety glasses, protective clothing, and use a piece of cardboard or wood when searching for hydraulic leaks. **DO NOT USE YOUR HANDS! SEE ILLUSTRATION.**



GENERAL SAFETY PRECAUTIONS

WARNING!



DO NOT MODIFY MACHINE OR ATTACHMENTS

Modifications may weaken the integrity of the attachment and may impair the function, safety, life, and performance of the attachment. When making repairs, use only the manufacturer's genuine parts, following authorized instructions. Other parts may be substandard in fit and quality. Never modify any ROPS (Roll Over Protection Structure) or FOPS (Falling Object Protective Structure) equipment or device. Any modifications must be authorized in writing by the manufacturer.

WARNING!



SAFELY MAINTAIN AND REPAIR EQUIPMENT

- Do not wear loose clothing or any accessories that can catch in moving parts. If you have long hair, cover or secure it so that it does not become entangled in the equipment.
- Work on a level surface in a well-lit area.
- Use properly grounded electrical outlets and tools.
- Use the correct tools for the job at hand. Make sure they are in good condition for the task required.
- Wear the protective equipment specified by the tool manufacturer.



SAFELY OPERATE EQUIPMENT

Do not operate equipment until you are completely trained by a qualified operator in how to use the controls, know its capabilities, dimensions, and all safety requirements. See your machine's manual for these instructions.

- Keep all step plates, grab bars, pedals, and controls free of dirt, grease, debris, and oil.
- Never allow anyone to be around the equipment when it is operating.
- Do not allow riders on the attachment or the prime mover.
- Do not operate the equipment from anywhere other than the correct operator's position.
- Never leave equipment unattended with the engine running, or with this attachment in a raised position.
- Do not alter or remove any safety feature from the prime mover or this attachment.
- Know your work site safety rules as well as traffic rules and flow. When in doubt on any safety issue, contact your supervisor or safety coordinator for an explanation.

WARNING!



CALIFORNIA PROPOSITION 65 WARNING

This product may contain a chemical known to the state of California to cause cancer, or birth defects or other reproductive harm. www.P65Warnings.ca.gov

EQUIPMENT SAFETY PRECAUTIONS

WARNING!



KNOW WHERE UTILITIES ARE

Observe overhead electrical and other utility lines. Be sure equipment will clear them. When digging, call your local utilities for location of buried utility lines, gas, water, and sewer, as well as any other hazard you may encounter.

WARNING!



EXPOSURE TO RESPIRABLE CRYSTALLINE SILICA DUST ALONG WITH OTHER HAZARDOUS DUSTS MAY CAUSE SERIOUS OR FATAL RESPIRATORY DISEASE.

It is recommended to use dust suppression, dust collection and if necessary personal protective equipment during the operation of any attachment that may cause high levels of dust.

WARNING!



REMOVE PAINT BEFORE WELDING OR HEATING

Hazardous fumes/dust can be generated when paint is heated by welding, soldering or using a torch. Do all work outside or in a well ventilated area and dispose of paint and solvent properly. Remove paint before welding or heating.

When sanding or grinding paint, avoid breathing the dust. Wear an approved respirator. If you use solvent or paint stripper, remove stripper with soap and water before welding. Remove solvent or paint stripper containers and other flammable material from area. Allow fumes to disperse at least 15 minutes before welding or heating.

WARNING!



END OF LIFE DISPOSAL

At the completion of the useful life of the unit, drain all fluids and dismantle by separating the different materials (rubber, steel, plastic, etc.). Follow all federal, state and local regulations for recycling and disposal of the fluid and components.



OPERATING THE SILAGE DEFACER

- Clear the work area of all bystanders before operation!
- Operate only from the operator's station with seatbelt properly attached.
- Do not exceed the lifting capacity of your prime mover and attachment. Always observe lift capacity limits listed in machine specifications or on load charts furnished with the prime mover.
- Reduce speed when driving over rough terrain, on a slope, or turning, to avoid overturning the vehicle.
- Never use the attachment for a work platform or personnel carrier.
- An operator must not use drugs or alcohol, which can change his or her alertness or coordination. An operator taking prescription or over-the-counter drugs should seek medical advice on whether or not he or she can safely operate equipment.
- Always check locking pins before operating any attachment.
- Before exiting the prime mover, lower the attachment to the ground, apply the brakes, turn off the prime mover's engine, and remove the key.

EQUIPMENT SAFETY PRECAUTIONS



TRANSPORTING THE ATTACHMENT

- Travel only with the attachment in a safe transport position to prevent uncontrolled movement. Drive slowly over rough ground and on slopes.
- Allow for the added length of the silage defacer when transporting, so as not to catch the unit on obstacles.
- When driving on public roads use safety lights, reflectors, Slow Moving Vehicle signs etc., to prevent accidents. Check local government regulations that may affect you.
- Do not drive close to ditches, excavations, etc., cave-in could result.
- Do not smoke when refueling the prime mover. Allow room in the fuel tank for expansion. Wipe up any spilled fuel. Secure cap tightly when done.



MAINTAINING THE ATTACHMENT

- Before performing maintenance, lower the attachment to the ground, turn off the engine, remove the key and apply the brakes.
- Never perform any work on the attachment unless you are authorized and qualified to do so. Always read the operator service manuals before any repair is made. After completing maintenance or repair, check for correct functioning of the skid hoe. If not functioning properly, always tag “DO NOT OPERATE” until all problems are corrected.
- Worn, damaged, or illegible safety decals must be replaced. New safety decals can be ordered from Paladin.
- Never make hydraulic repairs while the system is under pressure. Serious personal injury or death could result.
- Never work under a raised attachment.

INSTALLATION AND OPERATION

ATTACHING AND DETACHING SILAGE DEFACER

IMPORTANT: On units serial number 400010 & UP the right blade end must be installed prior to operation. Bolt the right end blade to the adapter shaft using the hardware provided.

Please see your vehicle operator's manual for instructions on attaching and detaching your equipment.

WARNING!



To prevent serious personal injury or death, only attach equipment that is designed for your prime mover.

Specified lift capacities must not be exceeded, otherwise machine stability will not be sufficient. Always observe lift capacity limits listed in machine specifications.

OPERATING SILAGE DEFACER

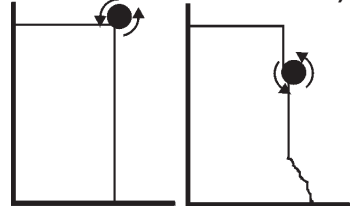
- Read all Safety Precautions before operating your new attachment.

The silage defacer was designed to loosen haylage and silage from a tightly compacted bunker. It maintains a smooth, compacted bunker-face for reduced spoil, and the open design allows the operator to see the bunker face and the surrounding work area.

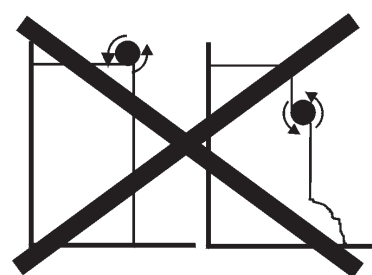
There are guides on the end of each arm to limit the depth of each cut. The guides can be easily adjusted by loosening the bolts and sliding the guide in or out until the desired cutting depth is reached.

1. Clear the area of all bystanders, and engage the defacer only from the operator's station.
2. Position the defacer at the top of the bunker and engage the auxiliary hydraulics. When the defacer has reached full speed, slowly lower into the silage at the desired cutting depth. Do not deface more than 1"-3" of material on each pass, depending on the material.
3. Keep defacer level while it is lowering, to help maintain an even cut.
4. Repeat steps #1 through #3 until the desired amount of silage has been obtained.

PROPER OPERATION (1"-3" MATERIAL PER PASS)



IMPROPER OPERATION



Silage Defacer Operating Tips

1. For best results do not force the defacer down through the material, but allow gravity and the removal of material to determine the downward speed.
2. To prevent attachment and property damage, avoid direct contact of tines with bunker walls and floor.
3. Due to silage piling up on the ground, to obtain a clean cut of the entire bunker face, you may wish to first cut the bottom 4 feet, and then reposition the defacer at the top, and finish the downward cut.
4. A 2" depth of cut is recommended to avoid stalling, and to obtain a clean face.

DANGER!



ROTATING HAZARD! To prevent serious injury or death:

- Clear area of all bystanders.
- Operate the attachment only when properly seated at the operator's station. Before exiting the prime mover, lower the defacer to the ground, turn off the prime mover's engine, remove the key and apply the brakes.
- Do not leave operator's station until all movement has stopped.

INSTALLATION AND OPERATION

TROUBLESHOOTING

| PROBLEM | POSSIBLE CAUSE | POSSIBLE SOLUTION |
|-----------------------------------|---|--|
| Excessive noise. | 1. Bearings worn and “squeaking”. | • Check and replace, as necessary. |
| | 2. Cutters bent. | • Repair or replace. |
| Decreased performance. | 1. Chain loose. | • See “Troubleshooting Loose Chain”. |
| | 2. Cutters damaged. | • Check blades and repair or replace, as necessary. See “Operating Silage Defacer” in the “Installation and Operation” section of this manual. |
| Cutters not turning. | 1. Chain broken. | • Repair or replace. |
| | 2. Drive motor failure. | • Repair or replace. |
| | 3. Drive motor key broken. | • Replace key. |
| | 4. Sprocket damaged. | • Replace sprocket. |
| Loose Chain. | 1. Cam lock not tight. | • Re-tension chain, and tighten mounting bolts on cam lock. |
| | 2. Sprocket, bearing, or chain worn. | • Check, and replace any worn parts. |
| Excessive oil temperature. | 1. Hydraulic oil level too low. | • Refer to skid-steer's owners manual. |
| | 2. Obstruction in hydraulic lines. | • Remove obstruction and replace, if necessary. |
| | 3. Couplers not engaged correctly. | • Engage couplers. |
| | 4. Hydraulic system overloaded, and system relief open. | • Reduce load. |

MAINTENANCE & SERVICE

GENERAL INFORMATION

Regular maintenance is the key to long equipment life and safe operation. Maintenance requirements have been kept to an absolute minimum. However, it is very important that these maintenance functions be performed as described in this section.

WARNING! DO NOT OPERATE THE SILAGE DEFACER DURING ANY MAINTENANCE, OR WHILE THE TOP CHAIN COVER IS REMOVED.



DAILY

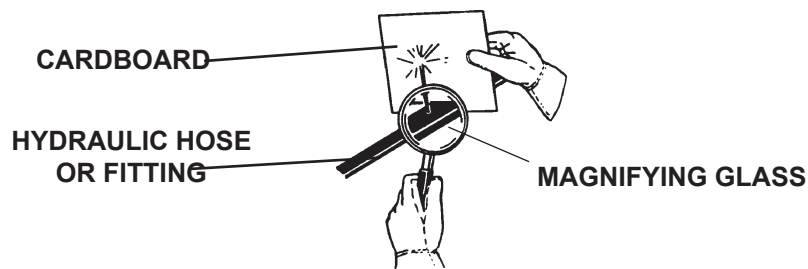
- Check all bolts and nuts for tightness.
- Replace any missing bolts or nuts with approved replacement parts.
- Check hydraulic system for hydraulic oil leaks. See procedure below.
- Visually inspect the machine for worn parts or cracked welds, and repair, as necessary.

WARNING! Escaping fluid under pressure can have sufficient force to penetrate the skin, causing serious personal injury. Fluid escaping from a very small hole can be almost invisible. Use a piece of cardboard or wood, rather than hands to search for suspected leaks.



Keep unprotected body parts, such as face, eyes, and arms as far away as possible from a suspected leak. Flesh injected with hydraulic fluid may develop gangrene or other permanent disabilities.

If injured by injected fluid, see a doctor at once. If your doctor is not familiar with this type of injury, ask him or her to research it immediately to determine proper treatment.



IMPORTANT: When replacing parts, use only factory approved replacement parts. Manufacturer will not claim responsibility for use of unapproved parts or accessories and/or other damages as a result of their use.

MAINTENANCE & SERVICE

MONTHLY OR EVERY 40 HOURS OF OPERATION

- Check all bearings for tightness. Tighten or replace, as needed.
- Clean equipment of dirt, oil, grease, etc. This will assist you in making a visual inspection, and help avoid overlooking worn or damaged components.
- Adjust the shoe weldments on the silage defacer so material is removed, but the shoe is never less than 1/2" shorter than the blades.
- Adjust and lubricate the drive chain. (See "Chain Adjustment" below.) **To lubricate the drive chain:** Remove the top chain cover and spray a chain lubricant along the top of the upper and lower portion of the drive chain.

CHAIN ADJUSTMENT

We recommend adjusting the chain on all of the silage defacers after the initial 4 hours, and then monthly thereafter.

To Adjust the Chain: Remove the top chain cover and loosen the two bolts on the motor mounting plate, and the one bolt on the cam lock. Insert a 1/2" ratchet into the cam lock, and rotate until the chain is tight. A properly adjusted chain will have a minimal amount of chain deflection. Over-tensioning will cause premature wear.

NOTE: If all of the cam lock adjustment is used and the chain and sprocket are still serviceable, you can remove a "half link" from the chain at the master link location.

LUBRICATION

The only other lubrication your attachment needs is the greasing of the flange and bearing set. A grease fitting has been installed to facilitate this task. We recommended that all grease fittings be lubricated after the initial 8 hours of operation, and then after every 40 hours of use thereafter.

DECAL IDENTIFICATION AND REPLACEMENT

Decal placement and identification for all of the attachments can be found on the parts diagrams and lists located at the back of this manual. The decals are identified by their part numbers with reductions of the actual decals located on the page. Use this information to order replacements for missing, illegible or damaged decals. When replacing parts with safety signs attached, the safety sign must also be replaced. All Safety Decals are free of charge. Contact your dealer for replacements.

REPLACING SAFETY SIGNS:

1. Clean the area of application with nonflammable solvent.
2. Wash the same area with soap and water, and then allow the surface to fully dry.
3. Remove the backing from the safety sign, exposing the adhesive surface.
4. Apply the safety sign to the location shown in the parts diagram, and smooth out bubbles.

Helpful Hints:

1. Decals adhere to a warm surface better than a cold surface.
2. Applying heat (from a hair dryer) will greatly improve your ability to remove a damaged decal before preparing the surface for installation of a new one.

BOLT TORQUE SPECIFICATIONS

GENERAL TORQUE SPECIFICATION TABLES


Use the following charts when determining bolt torque specifications when special torques are not given. Always use grade 5 or better when replacing bolts.

SAE BOLT TORQUE SPECIFICATIONS




NOTE: The following torque values are for use with extreme pressure lubricants, plating or hard washer applications. Increase torque 15% when using hardware that is unplated and either dry or lubricated with engine oil.

| Bolt Size | | SAE GRADE 5 TORQUE | | | | SAE GRADE 8 TORQUE | | | | Bolt head identification marks as per grade. NOTE: Manufacturing Marks Will Vary |
|-----------|-------------|--------------------|------|---------------|------|--------------------|------|---------------|------|--|
| | | Pounds Feet | | Newton-Meters | | Pounds Feet | | Newton-Meters | | |
| Inches | Millimeters | UNC | UNF | UNC | UNF | UNC | UNF | UNC | UNF | |
| 1/4 | 6.35 | 8 | 9 | 11 | 12 | 10 | 13 | 14 | 18 | |
| 5/16 | 7.94 | 14 | 17 | 19 | 23 | 20 | 25 | 27 | 34 | |
| 3/8 | 9.53 | 30 | 36 | 41 | 49 | 38 | 46 | 52 | 62 | |
| 7/16 | 11.11 | 46 | 54 | 62 | 73 | 60 | 71 | 81 | 96 | |
| 1/2 | 12.70 | 68 | 82 | 92 | 111 | 94 | 112 | 127 | 152 | |
| 9/16 | 14.29 | 94 | 112 | 127 | 152 | 136 | 163 | 184 | 221 | |
| 5/8 | 15.88 | 128 | 153 | 174 | 207 | 187 | 224 | 254 | 304 | |
| 3/4 | 19.05 | 230 | 275 | 312 | 373 | 323 | 395 | 438 | 536 | |
| 7/8 | 22.23 | 340 | 408 | 461 | 553 | 510 | 612 | 691 | 830 | |
| 1 | 25.40 | 493 | 592 | 668 | 803 | 765 | 918 | 1037 | 1245 | |
| 1-1/8 | 25.58 | 680 | 748 | 922 | 1014 | 1088 | 1224 | 1475 | 1660 | |
| 1-1/4 | 31.75 | 952 | 1054 | 1291 | 1429 | 1547 | 1700 | 2097 | 2305 | |
| 1-3/8 | 34.93 | 1241 | 1428 | 1683 | 1936 | 2023 | 2312 | 2743 | 3135 | |
| 1-1/2 | 38.10 | 1649 | 1870 | 2236 | 2535 | 2686 | 3026 | 3642 | 4103 | |




GRADE 2



GRADE 5


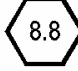
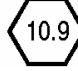


GRADE 8



METRIC BOLT TORQUE SPECIFICATIONS

NOTE: The following torque values are for use with metric hardware that is unplated and either dry or lubricated with engine oil. Reduce torque 15% when using hardware that has extreme pressure lubricants, plating or hard washer applications.

| Bolt head identification marks as per grade. | | |
|--|---|---|
|  |  |  |

| Size of Bolt | Grade No. | Pitch (mm) | Pounds Feet | Newton-Meters | Pitch (mm) | Pounds Feet | Newton-Meters |
|--------------|-----------|------------|-------------|---------------|------------|-------------|---------------|
| M6 | 5.6 | 1.0 | 3.6-5.8 | 4.9-7.9 | - | - | - |
| | 8.8 | | 5.8-4 | 7.9-12.7 | | - | - |
| | 10.9 | | 7.2-10 | 9.8-13.6 | | - | - |
| M8 | 5.6 | 1.25 | 7.2-14 | 9.8-19 | 1.0 | 12-17 | 16.3-23 |
| | 8.8 | | 17-22 | 23-29.8 | | 19-27 | 25.7-36.6 |
| | 10.9 | | 20-26 | 27.1-35.2 | | 22-31 | 29.8-42 |
| M10 | 5.6 | 1.5 | 20-25 | 27.1-33.9 | 1.25 | 20-29 | 27.1-39.3 |
| | 8.8 | | 34-40 | 46.1-54.2 | | 35-47 | 47.4-63.7 |
| | 10.9 | | 38-46 | 51.5-62.3 | | 40-52 | 54.2-70.5 |
| M12 | 5.6 | 1.75 | 28-34 | 37.9-46.1 | 1.25 | 31-41 | 42-55.6 |
| | 8.8 | | 51-59 | 69.1-79.9 | | 56-68 | 75.9-92.1 |
| | 10.9 | | 57-66 | 77.2-89.4 | | 62-75 | 84-101.6 |
| M14 | 5.6 | 2.0 | 49-56 | 66.4-75.9 | 1.5 | 52-64 | 70.5-86.7 |
| | 8.8 | | 81-93 | 109.8-126 | | 90-106 | 122-143.6 |
| | 10.9 | | 96-109 | 130.1-147.7 | | 107-124 | 145-168 |
| M16 | 5.6 | 2.0 | 67-77 | 90.8-104.3 | 1.5 | 69-83 | 93.5-112.5 |
| | 8.8 | | 116-130 | 157.2-176.2 | | 120-138 | 162.6-187 |
| | 10.9 | | 129-145 | 174.8-196.5 | | 140-158 | 189.7-214.1 |
| M18 | 5.6 | 2.0 | 88-100 | 119.2-136 | 1.5 | 100-117 | 136-158.5 |
| | 8.8 | | 150-168 | 203.3-227.6 | | 177-199 | 239.8-269.6 |
| | 10.9 | | 175-194 | 237.1-262.9 | | 202-231 | 273.7-313 |
| M20 | 5.6 | 2.5 | 108-130 | 146.3-176.2 | 1.5 | 132-150 | 178.9-203.3 |
| | 8.8 | | 186-205 | 252-277.8 | | 206-242 | 279.1-327.9 |
| | 10.9 | | 213-249 | 288.6-337.4 | | 246-289 | 333.3-391.6 |

STORAGE

GENERAL INFORMATION

The following storage procedure will help you to keep your attachment in top condition. It will also help you get off to a good start the next time your equipment is needed. We therefore strongly recommend that you take the extra time to follow these procedures whenever your attachment will not be used for an extended period of time.

PREPARATION FOR STORAGE

1. Clean the attachment thoroughly, removing all mud, dirt, and grease.
2. Inspect for visible signs of wear, breakage, or damage. Order any parts required, and make the necessary repairs, to avoid delays when starting next season.
3. Tighten all loose nuts, capscrews, and hydraulic connections.
4. Lubricate all grease fittings.
5. Connect the hydraulic couplers together, or install covers, to protect the hydraulic system from contaminants.
6. Touch up all unpainted and exposed areas with paint, to prevent rust.
7. Replace decals, if damaged or in unreadable condition.
8. Store the attachment in a dry and protected place, with a cover, if possible. Leaving the attachment outside will materially shorten its life.

REMOVING FROM STORAGE

1. Remove all protective coverings.
2. Check hydraulic hoses for deterioration, and replace if necessary.

LIMITED WARRANTY

In order to provide you with the most UP-TO-DATE Warranty information, Paladin Warranty Statement and Warranty Procedures along with Warranty Registration and Claim Forms have been moved to our website at www.paladinattachments.com.

**THIS PAGE
IS INTENTIONALLY
BLANK**

PARTS

The following section contains detailed diagrams and parts lists which include your attachment. Please use these diagrams and parts lists to locate replacement parts, prior to contacting the parts department.

When servicing your attachment, remember to use only original manufacturer replacement parts. Substitute parts may not meet the standards required for safe, dependable operation.

To facilitate parts ordering, have the model and serial number of your product ready, to ensure that you receive the correct parts for your specific attachment.

The model and serial number for your attachment should be recorded in the space provided on the cover of this manual. This information may be obtained from the serial number identification plate located on your attachment. **See the parts diagram for your attachment for the location.**

NOTE: Most daily and emergency orders received by 2:00 P.M. will be shipped the same day received, with “Emergency-Machine-Down” orders receiving first priority.



PARTS DEPARTMENT

(734) 996-9116

(800) 456-7100

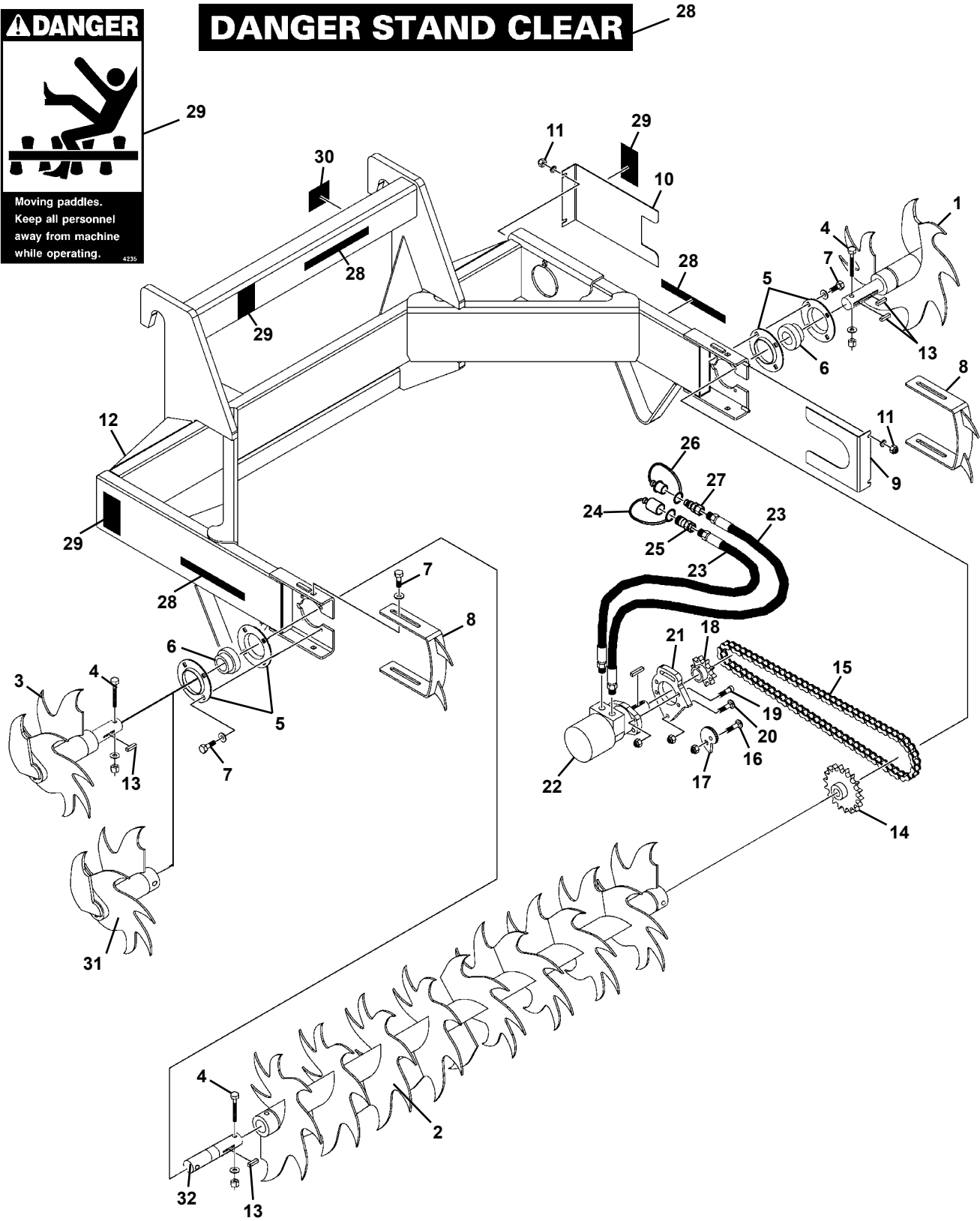
We Encourage Fax Orders

(734) 996-9014

SILAGE DEFACER

ASSEMBLY #12364

DIAGRAM 1 OF 2



M-1938 4-17-15-2

SILAGE DEFACER

ASSEMBLY #12364

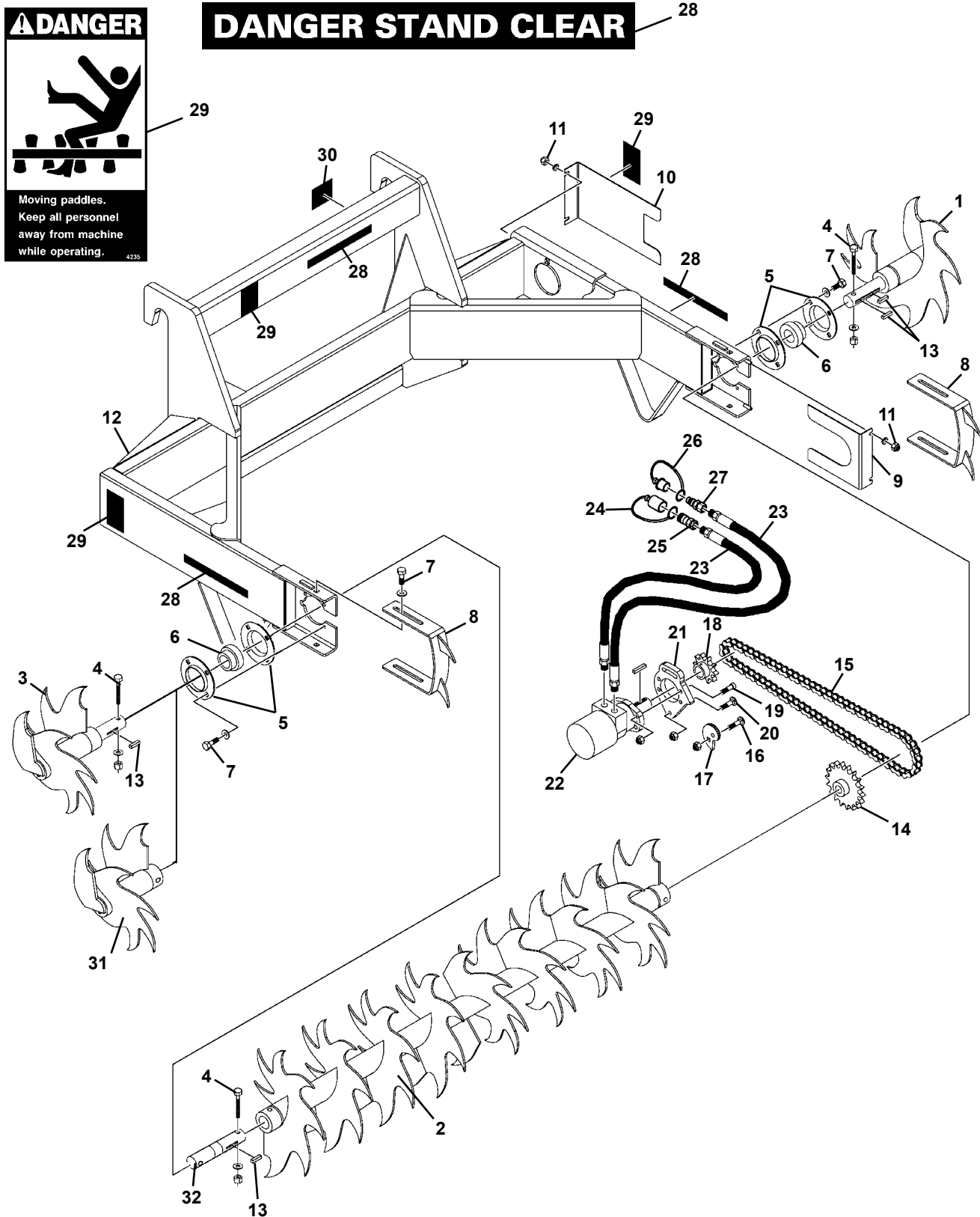
LIST 1 OF 2

| <u>ITEM</u> | <u>QTY.</u> | <u>PART NO.</u> | <u>DESCRIPTION</u> |
|-------------|-------------|-----------------|--|
| 1 | 1 | 105447 | Blade, Left End |
| 2 | 1 | 105448 | Blade, Center |
| 3 | 1 | 105449 | Blade, Right End - Serial Number 400009 & DOWN |
| 4 | 3 | 1051 | .38" UNC x 3.00" Hex Capscrew |
| | 3 | 1525 | .38" Flat Washer |
| | 3 | 1837 | .38" UNC Deformed Lock Nut |
| 5 | 2 | 89129 | Flangette Set |
| | - | 6616 | Replacement Grease Fitting |
| 6 | 2 | 89127 | Ball Bearing With Collar |
| | - | 1624 | Replacement Set Screw |
| 7 | 12 | 1088 | .50" UNC x 1.00 Hex Capscrew |
| | 12 | 1646 | .50" Hard Flat Washer |
| 8 | 2 | 33427 | Shoe (Depth Guide) |
| 9 | 1 | 15751 | Bottom Chain Cover |
| 10 | 1 | 32849 | Top Chain Cover |
| 11 | 4 | 1837 | .38" UNC Deformed Lock Nut |
| | 4 | 1525 | .38" Flat Washer |
| 12 | 1 | 15249 | Silage Defacer Frame |
| 13 | 3 | 105482 | Square Key, .38" x 1.75" |
| 14 | 1 | 32905 | Sprocket, 18 Tooth, No. 80 |
| 15 | 1 | 32906 | Drive Chain, No. 80, 73 Pitches |
| | - | 53298 | Replacement Master Link |
| 16 | 1 | 1872 | .50" UNC X 1.50" Carriage Bolt |
| | 1 | 1790 | .50" UNC Serrated Flange Lock Nut |
| 17 | 1 | 32848 | Cam Lock |
| 18 | 1 | 33249 | Sprocket, 10 Tooth, No. 80 |
| 19 | 4 | 22336 | .50" UNC x 1.50" Socket Head Capscrew, Grade 8 |
| | 4 | 1228 | .50" UNC Hex Nut |
| 20 | 2 | 1872 | .50" UNC X 1.50" Carriage Bolt |
| | 2 | 1790 | .50" UNC Serrated Flange Lock Nut |

SILAGE DEFACER

ASSEMBLY #12364

DIAGRAM 2 OF 2



M-1940 4-17-15-2

SILAGE DEFACER

ASSEMBLY #12364

LIST 2 OF 2

| <u>ITEM</u> | <u>QTY.</u> | <u>PART NO.</u> | <u>DESCRIPTION</u> |
|-------------|-------------|-----------------|--|
| 21 | 1 | 32847 | Motor Mounting Plate |
| 22 | 1 | 33200 | Motor |
| | - | 5662 | Replacement Key |
| 23 | 2 | 37975 | Hose .62" x 60" 8MBo-10MBo |
| 24 | 1 | 32548 | Female Coupler Cover |
| 25 | 1 | 84928 | Female Quick Coupler |
| 26 | 1 | 32549 | Male Coupler Cover |
| 27 | 1 | 84923 | Male Quick Coupler |
| 28 | 3 | 4105 | Danger Stand Clear Decal |
| 29 | 3 | 4235 | Moving Paddles Danger Decal |
| 30 | 1 | ----- | Serial Number Identification Tag Location |
| 31 | 1 | 120356 | Blade, Right End - Serial Number 400010 & UP |
| 32 | 1 | 120354 | Adapter Shaft - Serial Number 400010 & UP |

SILAGE DEFACER

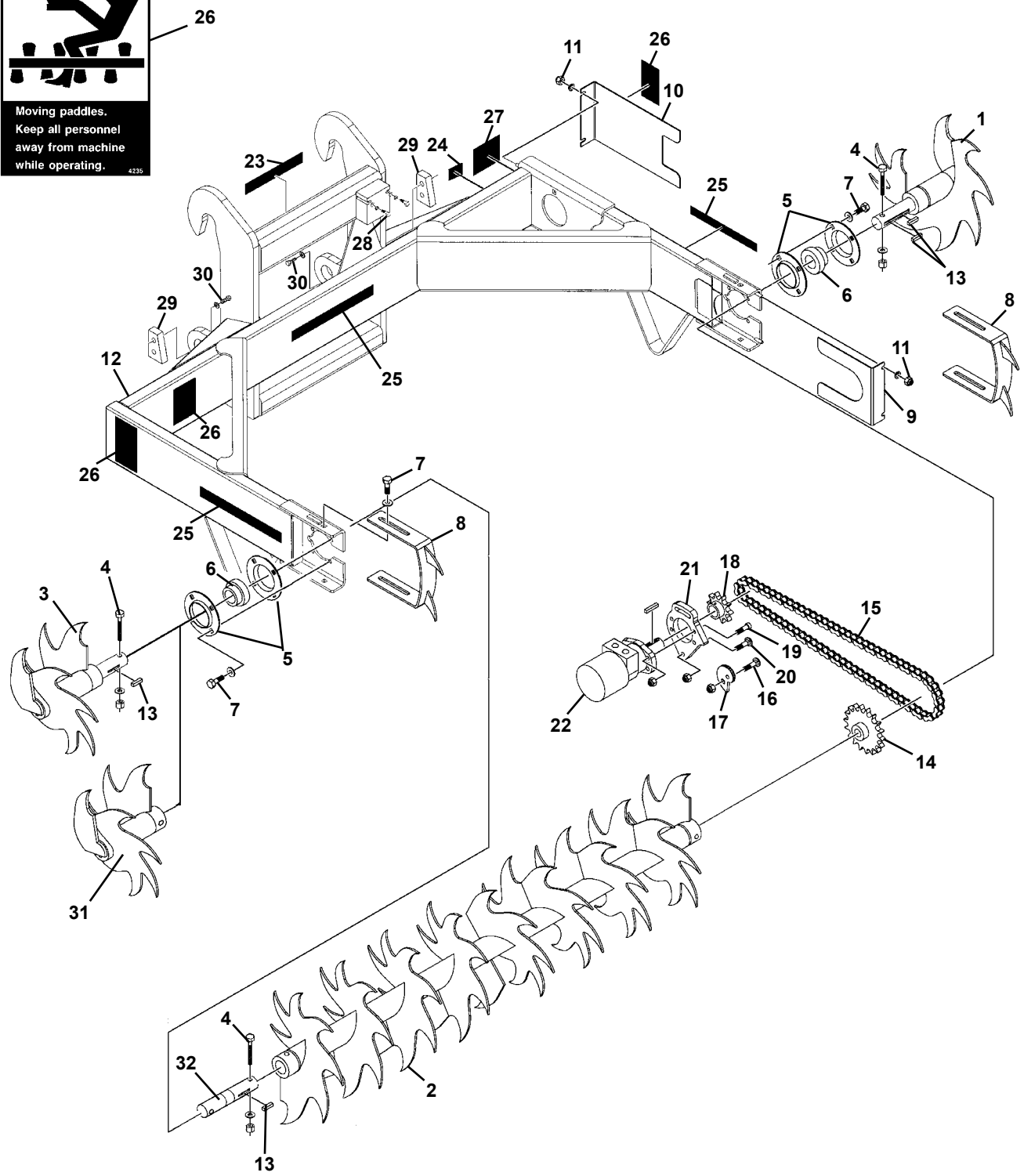
ASSEMBLY #12425

DIAGRAM 1 OF 2



DANGER STAND CLEAR

25



M-1946 4-17-15-3

SILAGE DEFACER

ASSEMBLY #12425

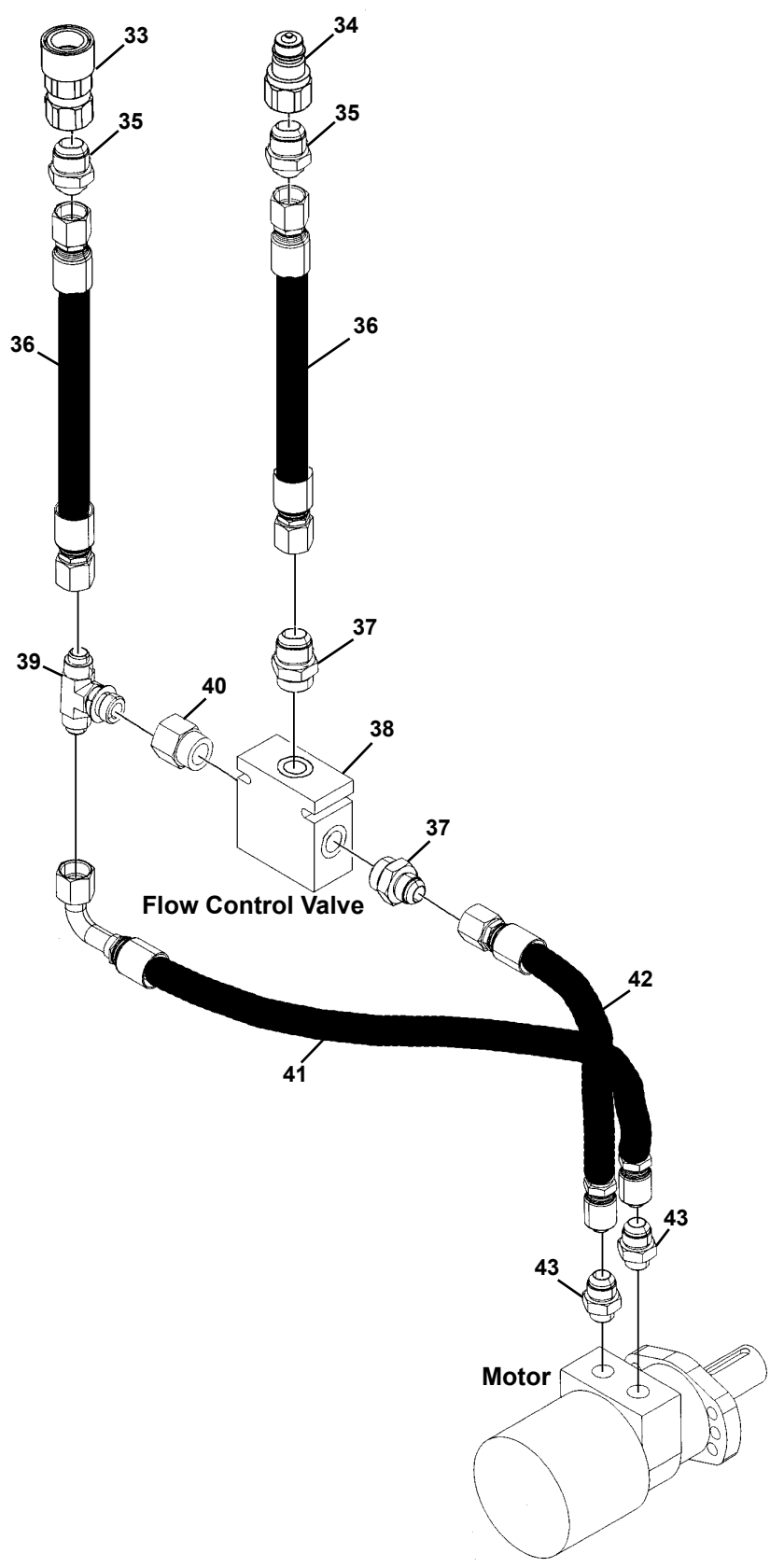
LIST 1 OF 2

| <u>ITEM</u> | <u>QTY.</u> | <u>PART NO.</u> | <u>DESCRIPTION</u> |
|-------------|-------------|-----------------|--|
| 1 | 1 | 105447 | Blade, Left End |
| 2 | 1 | 105448 | Blade, Center |
| 3 | 1 | 105449 | Blade, Right End - Serial Number 400009 & DOWN |
| 4 | 3 | 1051 | .38" UNC x 3.00" Hex Capscrew |
| | 3 | 1525 | .38" Flat Washer |
| | 3 | 1837 | .38" UNC Deformed Lock Nut |
| 5 | 2 | 89129 | Flangette Set |
| | - | 6616 | Replacement Grease Fitting |
| 6 | 2 | 89127 | Ball Bearing With Collar |
| | - | 1624 | Replacement Set Screw |
| 7 | 12 | 1088 | .50" UNC x 1.00 Hex Capscrew |
| | 12 | 1646 | .50" Hard Flat Washer |
| 8 | 2 | 33427 | Shoe (Depth Guide) |
| 9 | 1 | 15751 | Bottom Chain Cover |
| 10 | 1 | 32849 | Top Chain Cover |
| 11 | 4 | 1837 | .38" UNC Deformed Lock Nut |
| | 4 | 1525 | .38" Flat Washer |
| 12 | 1 | 16794 | Silage Defacer Frame |
| 13 | 3 | 105482 | Square Key, .38" x 1.75" |
| 14 | 1 | 32905 | Sprocket, 18 Tooth, No. 80 |
| 15 | 1 | 32906 | Drive Chain, No. 80, 73 Pitches |
| | - | 53298 | Replacement Master Link |
| 16 | 1 | 1872 | .50" UNC X 1.50" Carriage Bolt |
| | 1 | 1790 | .50" UNC Serrated Flange Lock Nut |
| 17 | 1 | 32848 | Cam Lock |
| 18 | 1 | 33249 | Sprocket, 10 Tooth, No. 80 |
| 19 | 4 | 22336 | .50" UNC x 1.50" Socket Head Capscrew, Grade 8 |
| | 4 | 1228 | .50" UNC Hex Nut |
| 20 | 2 | 1872 | .50" UNC X 1.50" Carriage Bolt |
| | 2 | 1790 | .50" UNC Serrated Flange Lock Nut |
| 21 | 1 | 32847 | Motor Mounting Plate |
| 22 | 1 | 33200 | Motor |
| | - | 5662 | Replacement Key |
| 23 | 1 | Varies | Logo |
| 24 | 1 | 4338 | Made in USA Decal |
| 25 | 3 | 4105 | Danger Stand Clear Decal |
| 26 | 3 | 4235 | Moving Paddles Danger Decal |
| 27 | 1 | ----- | Serial Number Identification Tag Location |
| 28 | 2 | 1028 | .31" UNC x 2.50" Hex Capscrew |
| | 2 | 1502 | .31" Lock Washer |
| | 2 | 1513 | .31" Flat Washer |
| 29 | 2 | 14228 | Stop Block |
| 30 | 4 | 10012 | .75" UNC x 2.25" Hex Capscrew, Grade 8 |
| | 4 | 1507 | .75" Lock Washer |
| 31 | 1 | 120356 | Blade, Right End - Serial Number 400010 & UP |
| 32 | 1 | 120354 | Adapter Shaft - Serial Number 400010 & UP |

M-1947 4-17-15-3

SILAGE DEFACER
ASSEMBLY #12425

DIAGRAM 2 OF 2



SILAGE DEFACER

ASSEMBLY #12425

LIST 2 OF 2

| <u>ITEM</u> | <u>QTY.</u> | <u>PART NO.</u> | <u>DESCRIPTION</u> |
|-------------|-------------|-----------------|---------------------------------|
| 33 | 1 | 22518 | Female Quick Coupler |
| 34 | 1 | 22519 | Male Quick Coupler |
| 35 | 2 | 3419 | Straight Connector, 12MBo-12MJ |
| 36 | 2 | 37513 | Hose .75" x 60" 12FJX-12FJX |
| 37 | 2 | 3409 | Straight Connector, 16MBo-12MJ |
| 38 | 1 | 25314 | Flow Control Valve |
| 39 | 1 | 30350 | Tee |
| 40 | 1 | 30292 | Straight Connector, 16MBo-12FBo |
| 41 | 1 | 37658 | Hose .75" x 42" 12FJX-12FJX90° |
| 42 | 1 | 22571 | Hose .75" x 34" 12FJX-12FJX |
| 43 | 2 | 3286 | Straight Connector, 10MBo-12MJ |

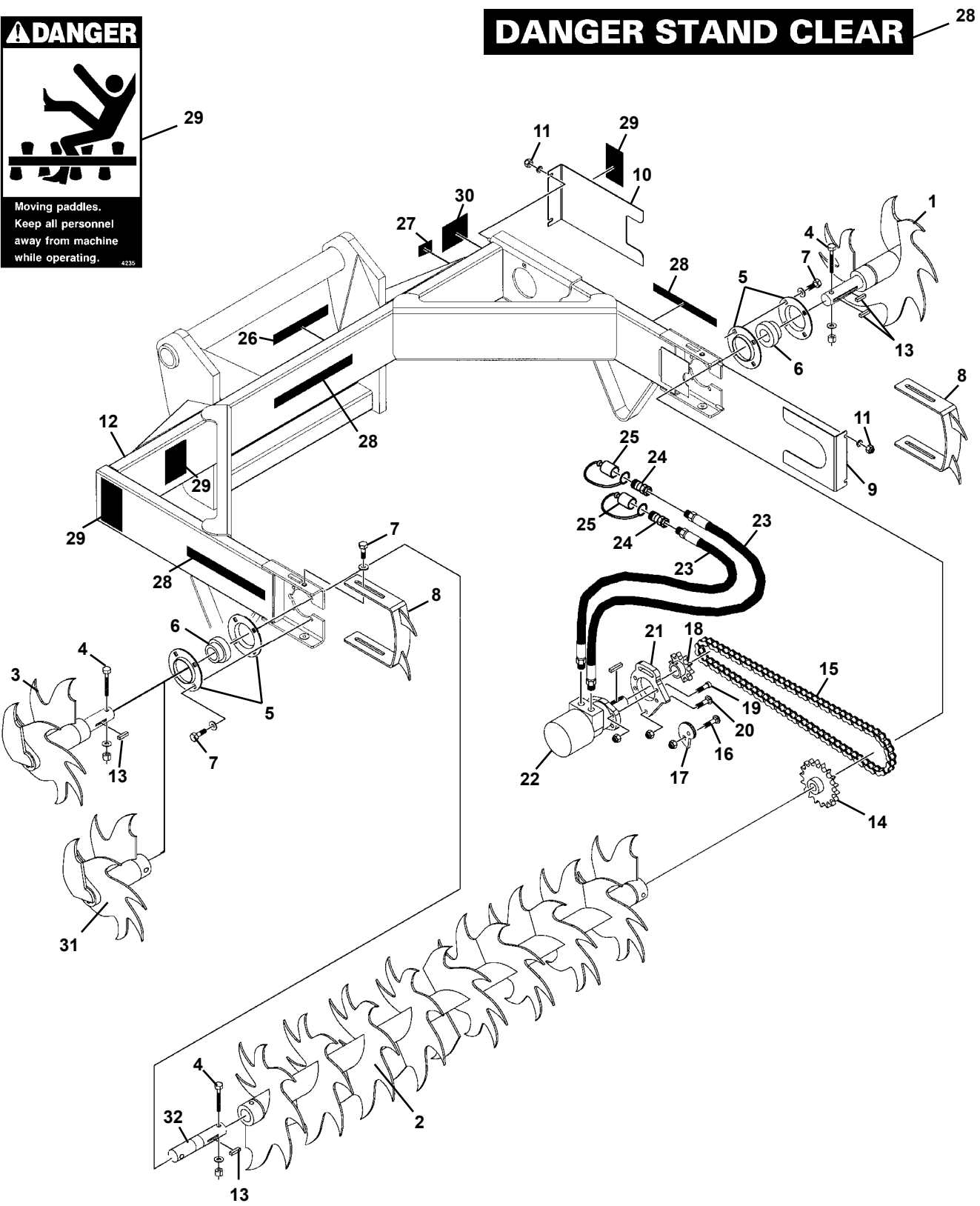
SILAGE DEFACER

ASSEMBLY #12686

DIAGRAM 1 OF 2



DANGER STAND CLEAR



SILAGE DEFACER

ASSEMBLY #12686

LIST 1 OF 2

| <u>ITEM</u> | <u>QTY.</u> | <u>PART NO.</u> | <u>DESCRIPTION</u> |
|-------------|-------------|-----------------|--|
| 1 | 1 | 105447 | Blade, Left End |
| 2 | 1 | 105448 | Blade, Center |
| 3 | 1 | 105449 | Blade, Right End - Serial Number 400009 & DOWN |
| 4 | 3 | 1051 | .38" UNC x 3.00" Hex Capscrew |
| | 3 | 1525 | .38" Flat Washer |
| | 3 | 1837 | .38" UNC Deformed Lock Nut |
| 5 | 2 | 89129 | Flangette Set |
| | - | 6616 | Replacement Grease Fitting |
| 6 | 2 | 89127 | Ball Bearing With Collar |
| | - | 1624 | Replacement Set Screw |
| 7 | 12 | 1088 | .50" UNC x 1.00 Hex Capscrew |
| | 12 | 1646 | .50" Hard Flat Washer |
| 8 | 2 | 33427 | Shoe (Depth Guide) |
| 9 | 1 | 15751 | Bottom Chain Cover |
| 10 | 1 | 32849 | Top Chain Cover |
| 11 | 4 | 1837 | .38" UNC Deformed Lock Nut |
| | 4 | 1525 | .38" Flat Washer |
| 12 | 1 | 100341 | Silage Defacer Frame |
| 13 | 3 | 105482 | Square Key, .38" x 1.75" |
| 14 | 1 | 32905 | Sprocket, 18 Tooth, No. 80 |
| 15 | 1 | 32906 | Drive Chain, No. 80, 73 Pitches |
| | - | 53298 | Replacement Master Link |
| 16 | 1 | 1872 | .50" UNC X 1.50" Carriage Bolt |
| | 1 | 1790 | .50" UNC Serrated Flange Lock Nut |
| 17 | 1 | 32848 | Cam Lock |
| 18 | 1 | 33249 | Sprocket, 10 Tooth, No. 80 |
| 19 | 4 | 22336 | .50" UNC x 1.50" Socket Head Capscrew, Grade 8 |
| | 4 | 1228 | .50" UNC Hex Nut |
| 20 | 2 | 1872 | .50" UNC X 1.50" Carriage Bolt |
| | 2 | 1790 | .50" UNC Serrated Flange Lock Nut |

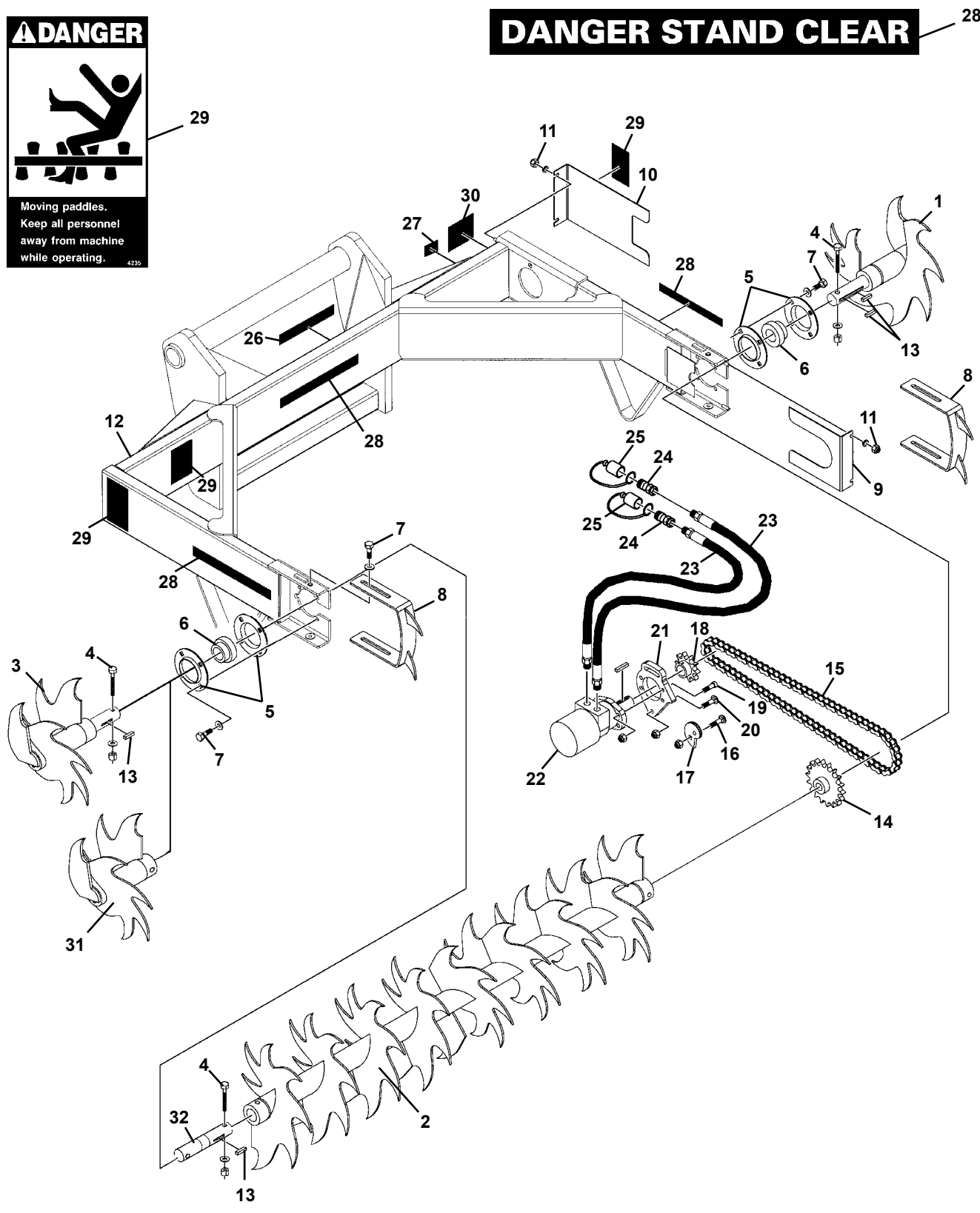
SILAGE DEFACER

ASSEMBLY #12686

DIAGRAM 2 OF 2



DANGER STAND CLEAR



M-1944 4-17-15-3

SILAGE DEFACER

ASSEMBLY #12686

LIST 2 OF 2

| <u>ITEM</u> | <u>QTY.</u> | <u>PART NO.</u> | <u>DESCRIPTION</u> |
|-------------|-------------|-----------------|--|
| 21 | 1 | 32847 | Motor Mounting Plate |
| 22 | 1 | 33200 | Motor |
| | - | 5662 | Replacement Key |
| 23 | 2 | 38187 | Hose .62" x 80" 8MBo-10MBo |
| 24 | 2 | 84928 | Female Quick Coupler |
| 25 | 2 | 32548 | Female Coupler Cover |
| 26 | 1 | Varies | Logo |
| 27 | 1 | 4338 | Made in USA Decal |
| 28 | 3 | 4105 | Danger Stand Clear Decal |
| 29 | 3 | 4235 | Moving Paddles Danger Decal |
| 30 | 1 | ----- | Serial Number Identification Tag Location |
| 31 | 1 | 120356 | Blade, Right End - Serial Number 400010 & UP |
| 32 | 1 | 120354 | Adapter Shaft - Serial Number 400010 & UP |

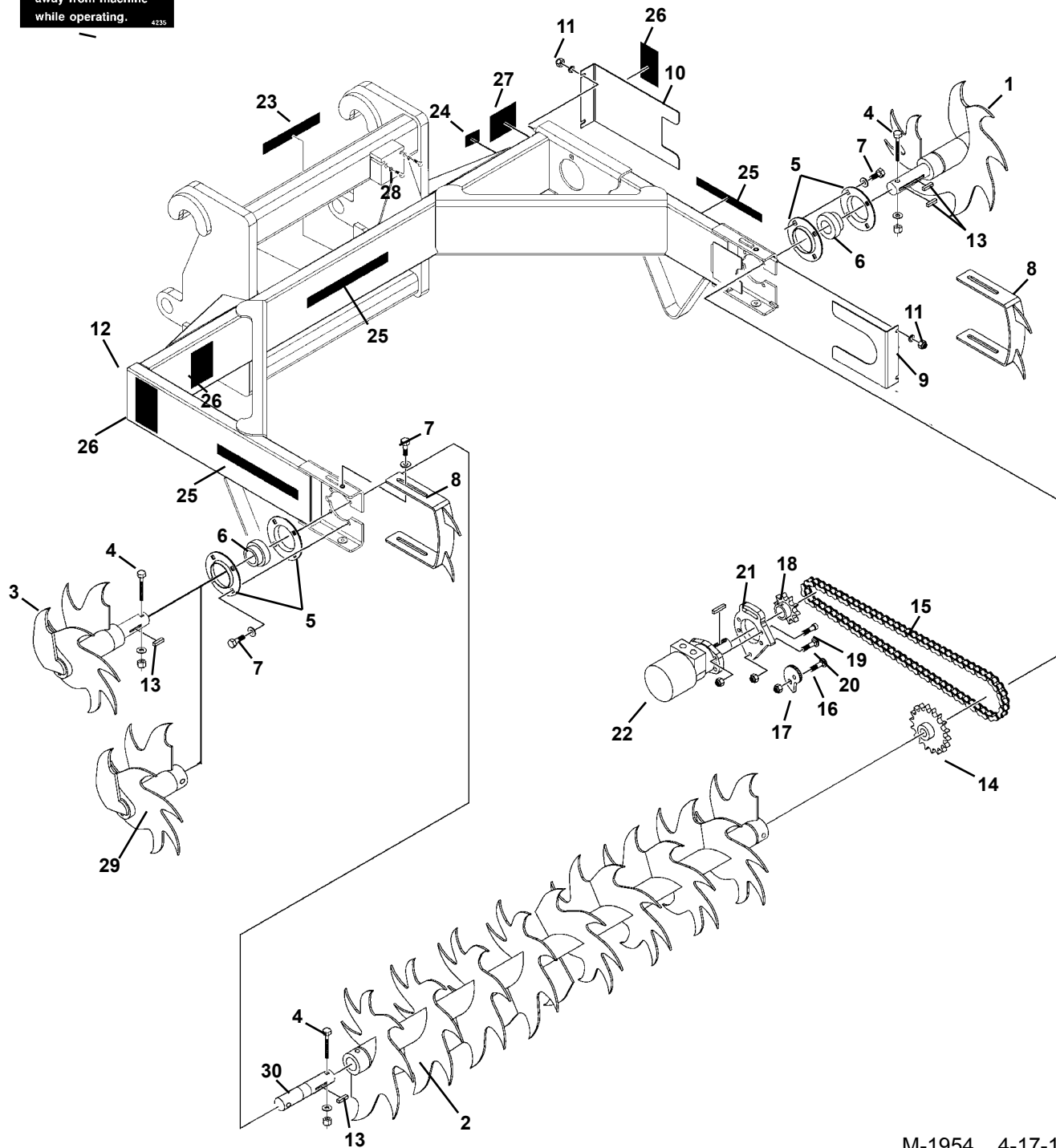
SILAGE DEFACER
ASSEMBLY #12745

DIAGRAM 1 OF 2



DANGER STAND CLEAR

25



M-1954 4-17-15-3

SILAGE DEFACER

ASSEMBLY #12745

LIST 1 OF 2

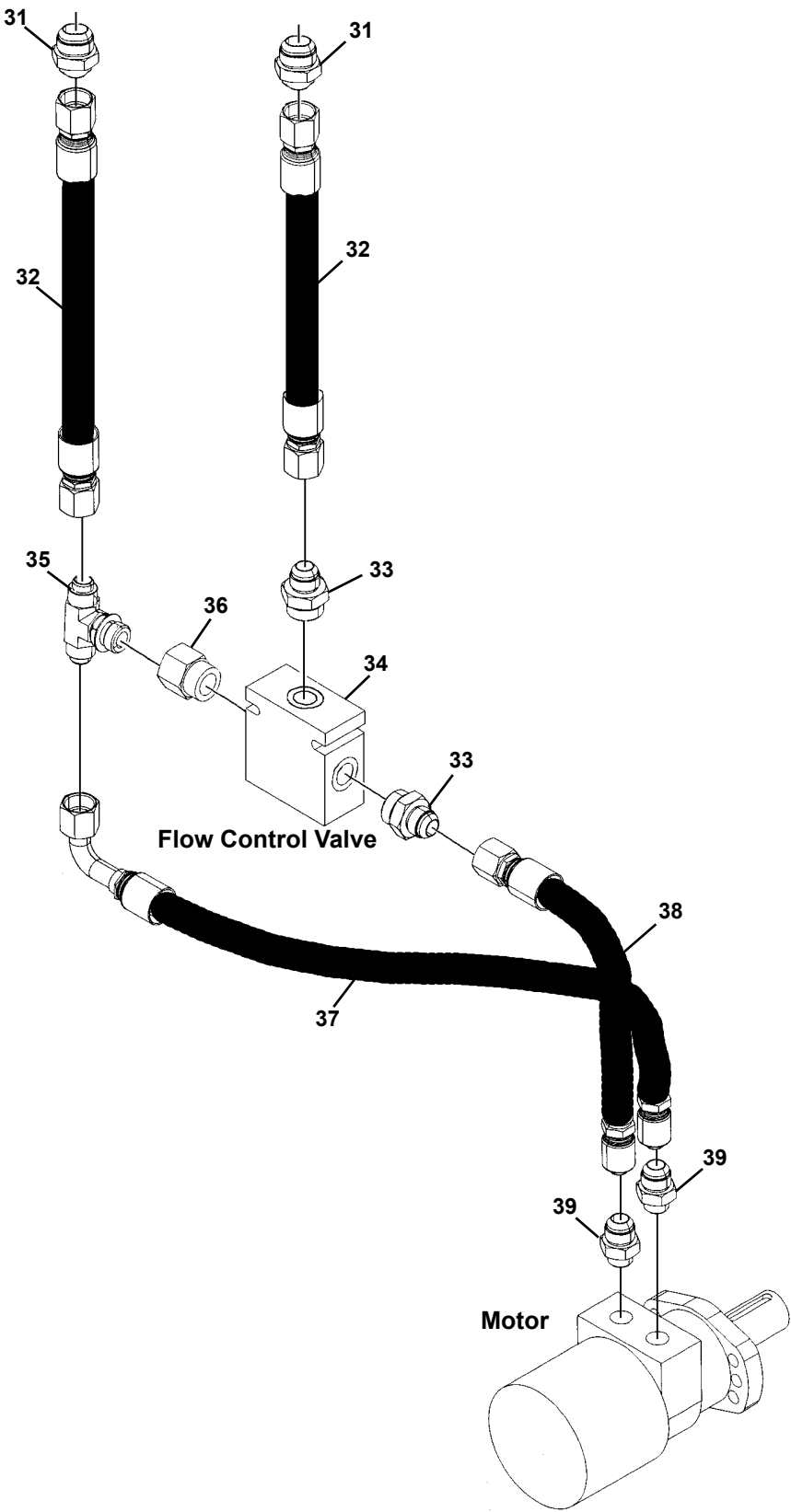
| <u>ITEM</u> | <u>QTY.</u> | <u>PART NO.</u> | <u>DESCRIPTION</u> |
|-------------|-------------|-----------------|--|
| 1 | 1 | 105447 | Blade, Left End |
| 2 | 1 | 105448 | Blade, Center |
| 3 | 1 | 105449 | Blade, Right End - Serial Number 400009 & DOWN |
| 4 | 2 | 1051 | .38" UNC x 3.00" Hex Capscrew |
| | 2 | 1525 | .38" Flat Washer |
| | 2 | 1837 | .38" UNC Deformed Lock Nut |
| 5 | 2 | 89129 | Flangette Set |
| | - | 6616 | Replacement Grease Fitting |
| 6 | 2 | 89127 | Ball Bearing With Collar |
| | - | 1624 | Replacement Set Screw |
| 7 | 12 | 1088 | .50" UNC x 1.00 Hex Capscrew |
| | 12 | 1646 | .50" Hard Flat Washer |
| 8 | 2 | 33427 | Shoe (Depth Guide) |
| 9 | 1 | 15751 | Bottom Chain Cover |
| 10 | 1 | 32849 | Top Chain Cover |
| 11 | 4 | 1837 | .38" UNC Deformed Lock Nut |
| | 4 | 1514 | .38" Flat Washer |
| 12 | 1 | 102902 | Silage Defacer Frame |
| 13 | 3 | 105482 | Square Key, .38" x 1.75" |
| 14 | 1 | 32905 | Sprocket, 18 Tooth, No. 80 |
| 15 | 1 | 32906 | Drive Chain, No. 80, 73 Pitches |
| | - | 53298 | Replacement Master Link |
| 16 | 1 | 1872 | .50" UNC X 1.50" Carriage Bolt |
| | 1 | 1790 | .50" UNC Serrated Flange Lock Nut |
| 17 | 1 | 32848 | Cam Lock |
| 18 | 1 | 33249 | Sprocket, 10 Tooth, No. 80 |
| 19 | 4 | 22336 | .50" UNC x 1.50" Socket Head Capscrew, Grade 8 |
| | 4 | 1228 | .50" UNC Hex Nut |
| 20 | 2 | 1872 | .50" UNC X 1.50" Carriage Bolt |
| | 2 | 1790 | .50" UNC Serrated Flange Lock Nut |
| 21 | 1 | 32847 | Motor Mounting Plate |
| 22 | 1 | 33200 | Motor |
| | - | 5662 | Replacement Key |
| 23 | 1 | Varies | Logo |
| 24 | 1 | 4338 | Made in USA Decal |
| 25 | 3 | 4105 | Danger Stand Clear Decal |
| 26 | 3 | 4235 | Moving Paddles Danger Decal |
| 27 | 1 | ---- | Serial Number Identification Tag Location |
| 28 | 2 | 1028 | .31" UNC x 2.50" Hex Capscrew |
| | 2 | 1502 | .31" Lock Washer |
| | 2 | 1513 | .31" Flat Washer |
| 29 | 1 | 120356 | Blade, Right End - Serial Number 400010 & UP |
| 30 | 1 | 120354 | Adapter Shaft - Serial Number 400010 & UP |

M-1955 4-17-15-3

SILAGE DEFACER

ASSEMBLY #12745

DIAGRAM 2 OF 2



M-1956 4-17-15-2

SILAGE DEFACER

ASSEMBLY #12745

LIST 2 OF 2

| <u>ITEM</u> | <u>QTY.</u> | <u>PART NO.</u> | <u>DESCRIPTION</u> |
|-------------|-------------|-----------------|---------------------------------|
| 31 | 2 | 3419 | Straight Connector, 12MBo-12MJ |
| 32 | 2 | 37513 | Hose .75" x 60" 12FJX-12FJX |
| 33 | 2 | 3409 | Straight Connector, 16MBo-12MJ |
| 34 | 1 | 25314 | Flow Control Valve |
| 35 | 1 | 30350 | Tee |
| 36 | 1 | 30292 | Straight Connector, 16MBo-12FBo |
| 37 | 1 | 37658 | Hose .75" x 42" 12FJX-12FJX90° |
| 38 | 1 | 22571 | Hose .75" x 34" 12FJX-12FJX |
| 39 | 2 | 3286 | Straight Connector, 10MBo-12MJ |

SILAGE DEFACER

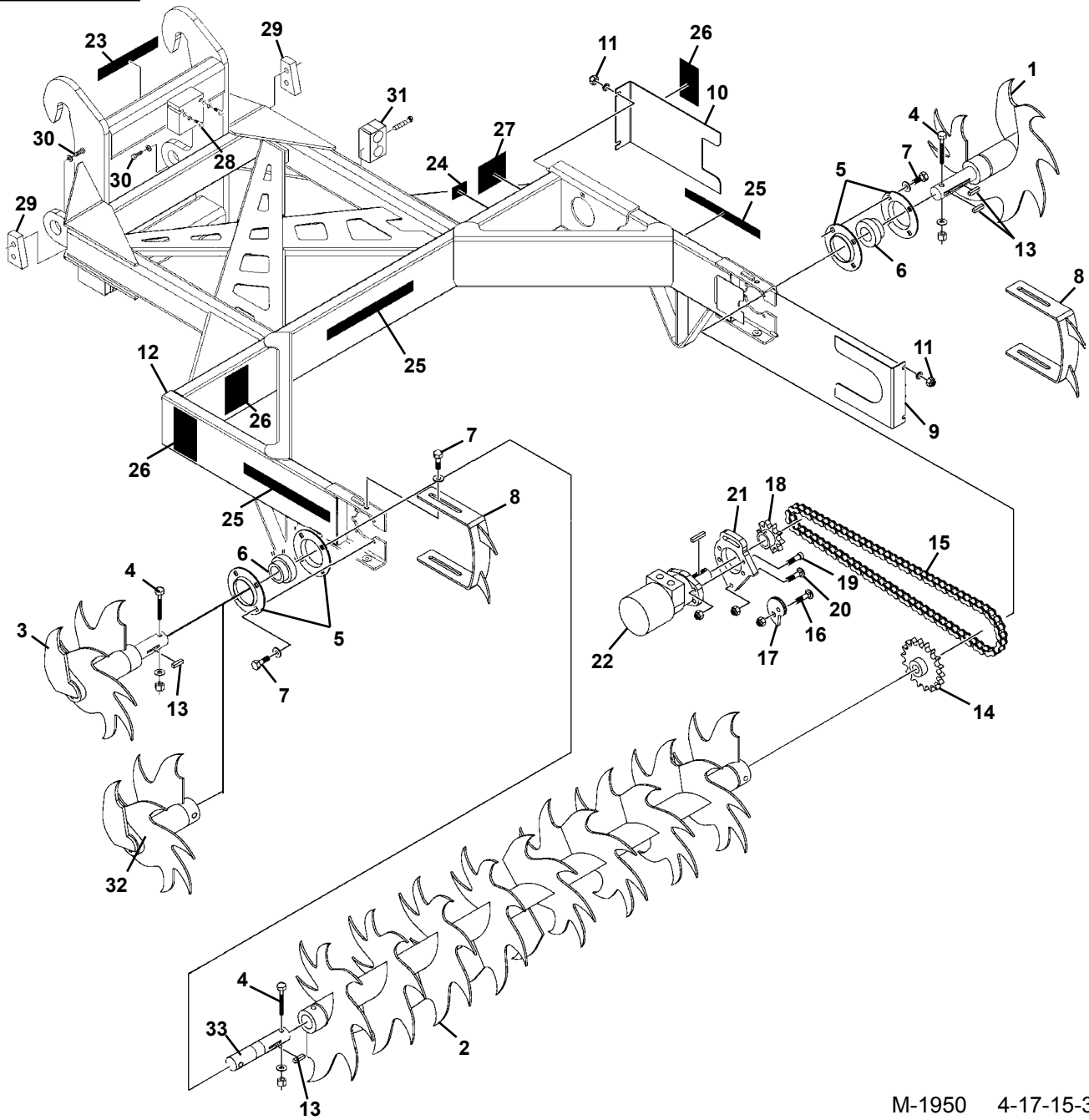
ASSEMBLY #12805

DIAGRAM 1 OF 2



DANGER STAND CLEAR

25



M-1950 4-17-15-3

SILAGE DEFACER

ASSEMBLY #12805

LIST 1 OF 2

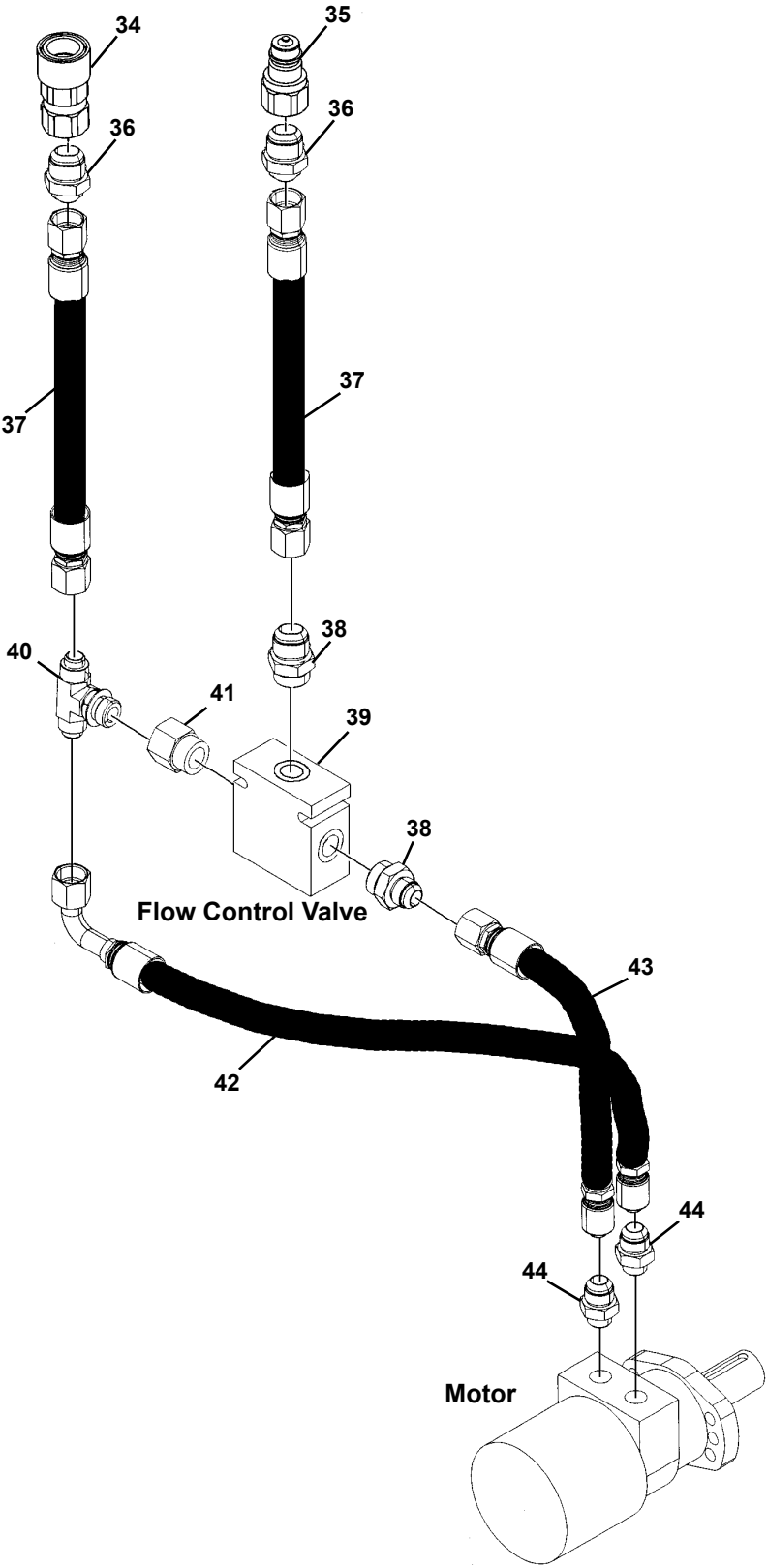
| <u>ITEM</u> | <u>QTY.</u> | <u>PART NO.</u> | <u>DESCRIPTION</u> |
|-------------|-------------|-----------------|--|
| 1 | 1 | 105447 | Blade, Left End |
| 2 | 1 | 105448 | Blade, Center |
| 3 | 1 | 105449 | Blade, Right End - Serial Number 400009 & DOWN |
| 4 | 3 | 1051 | .38" UNC x 3.00" Hex Capscrew |
| | 3 | 1525 | .38" Flat Washer |
| | 3 | 1837 | .38" UNC Deformed Lock Nut |
| 5 | 2 | 89129 | Flangette Set |
| | - | 6616 | Replacement Grease Fitting |
| 6 | 2 | 89127 | Ball Bearing With Collar |
| | - | 1624 | Replacement Set Screw |
| 7 | 12 | 1088 | .50" UNC x 1.00 Hex Capscrew |
| | 12 | 1646 | .50" Hard Flat Washer |
| 8 | 2 | 33427 | Shoe (Depth Guide) |
| 9 | 1 | 15751 | Bottom Chain Cover |
| 10 | 1 | 32849 | Top Chain Cover |
| 11 | 4 | 1837 | .38" UNC Deformed Lock Nut |
| | 4 | 1525 | .38" Flat Washer |
| 12 | 1 | 104775 | Silage Defacer Frame |
| 13 | 3 | 105482 | Square Key, .38" x 1.75" |
| 14 | 1 | 32905 | Sprocket, 18 Tooth, No. 80 |
| 15 | 1 | 32906 | Drive Chain, No. 80, 73 Pitches |
| | - | 53298 | Replacement Master Link |
| 16 | 1 | 1872 | .50" UNC X 1.50" Carriage Bolt |
| | 1 | 1790 | .50" UNC Serrated Flange Lock Nut |
| 17 | 1 | 32848 | Cam Lock |
| 18 | 1 | 33249 | Sprocket, 10 Tooth, No. 80 |
| 19 | 4 | 22336 | .50" UNC x 1.50" Socket Head Capscrew, Grade 8 |
| | 4 | 1228 | .50" UNC Hex Nut |
| 20 | 2 | 1872 | .50" UNC X 1.50" Carriage Bolt |
| | 2 | 1790 | .50" UNC Serrated Flange Lock Nut |
| 21 | 1 | 32847 | Motor Mounting Plate |
| 22 | 1 | 33200 | Motor |
| | - | 5662 | Replacement Key |
| 23 | 1 | Varies | Logo |
| 24 | 1 | 4338 | Made in USA Decal |
| 25 | 3 | 4105 | Danger Stand Clear Decal |
| 26 | 3 | 4235 | Moving Paddles Danger Decal |
| 27 | 1 | ----- | Serial Number Identification Tag Location |
| 28 | 2 | 1028 | .31" UNC x 2.50" Hex Capscrew |
| | 2 | 1502 | .31" Lock Washer |
| | 2 | 1513 | .31" Flat Washer |
| 29 | 2 | 14228 | Stop Block |
| 30 | 4 | 10012 | .75" UNC x 2.25" Hex Capscrew, Grade 8 |
| | 4 | 1507 | .75" Lock Washer |
| 31 | 1 | 17143 | Double Hose Clamp |
| 32 | 1 | 120356 | Blade, Right End - Serial Number 400010 & UP |
| 33 | 1 | 120354 | Adapter Shaft - Serial Number 400010 & UP |

M-1951 4-17-15-3

SILAGE DEFACER

ASSEMBLY #12805

DIAGRAM 2 OF 2



SILAGE DEFACER

ASSEMBLY #12805

LIST 2 OF 2

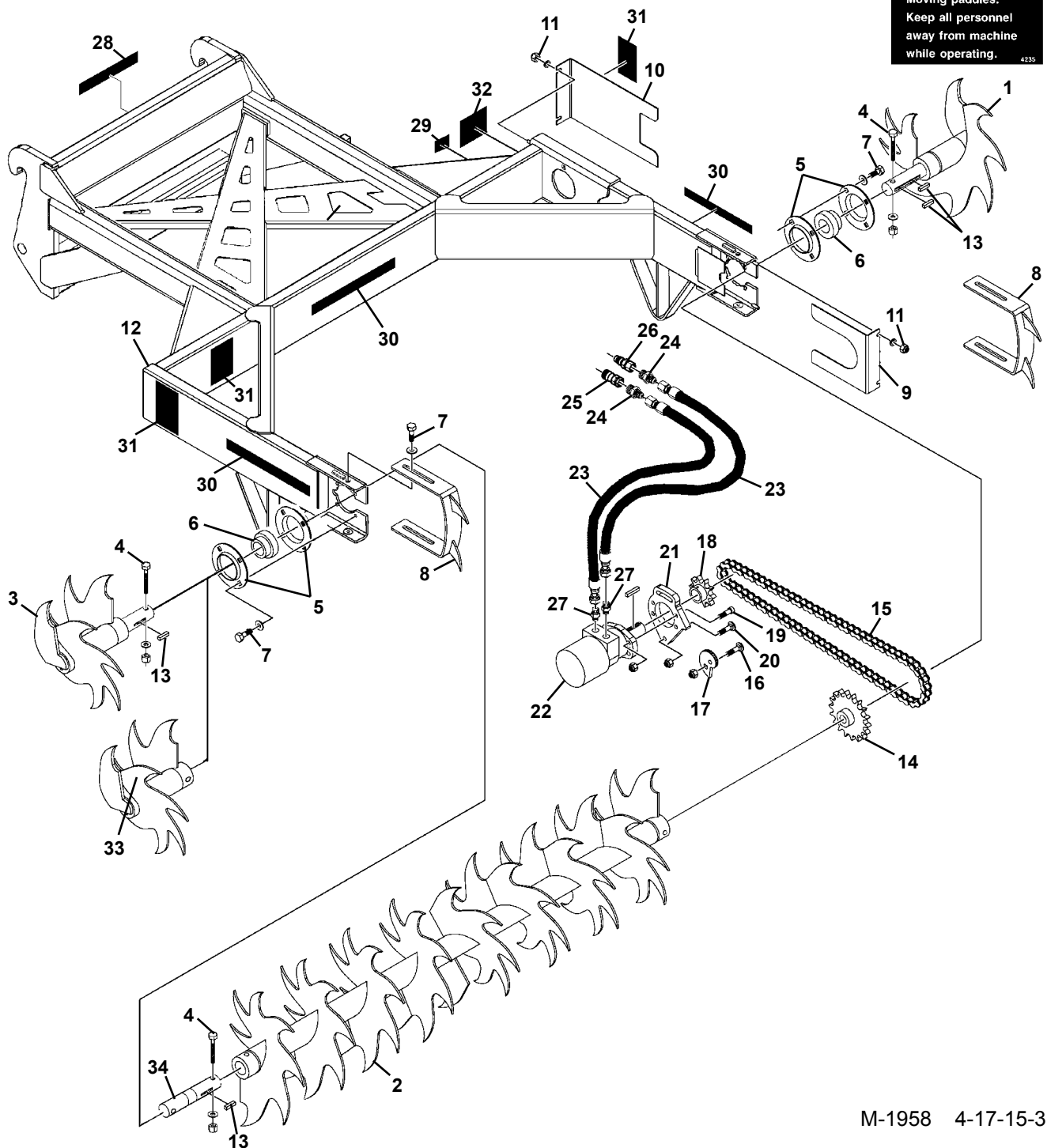
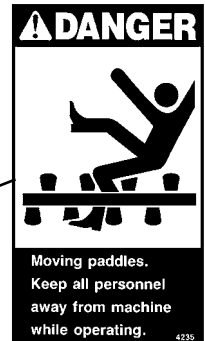
| <u>ITEM</u> | <u>QTY.</u> | <u>PART NO.</u> | <u>DESCRIPTION</u> |
|-------------|-------------|-----------------|---------------------------------|
| 34 | 1 | 22518 | Female Quick Coupler |
| 35 | 1 | 22519 | Male Quick Coupler |
| 36 | 2 | 3419 | Straight Connector, 12MBo-12MJ |
| 37 | 2 | 37513 | Hose .75" x 60" 12FJX-12FJX |
| 38 | 2 | 3409 | Straight Connector, 16MBo-12MJ |
| 39 | 1 | 25314 | Flow Control Valve |
| 40 | 1 | 30350 | Tee |
| 41 | 1 | 30292 | Straight Connector, 16MBo-12FBo |
| 42 | 1 | 38000 | Hose .75" x 82" 12FJX-12FJX90° |
| 43 | 1 | 37912 | Hose .75" x 74" 12FJX-12FJX |
| 44 | 2 | 3286 | Straight Connector, 10MBo-12MJ |

SILAGE DEFACER

ASSEMBLY #12871

DIAGRAM 1 OF 2

DANGER STAND CLEAR



M-1958 4-17-15-3

SILAGE DEFACER

ASSEMBLY #12871

LIST 1 OF 2

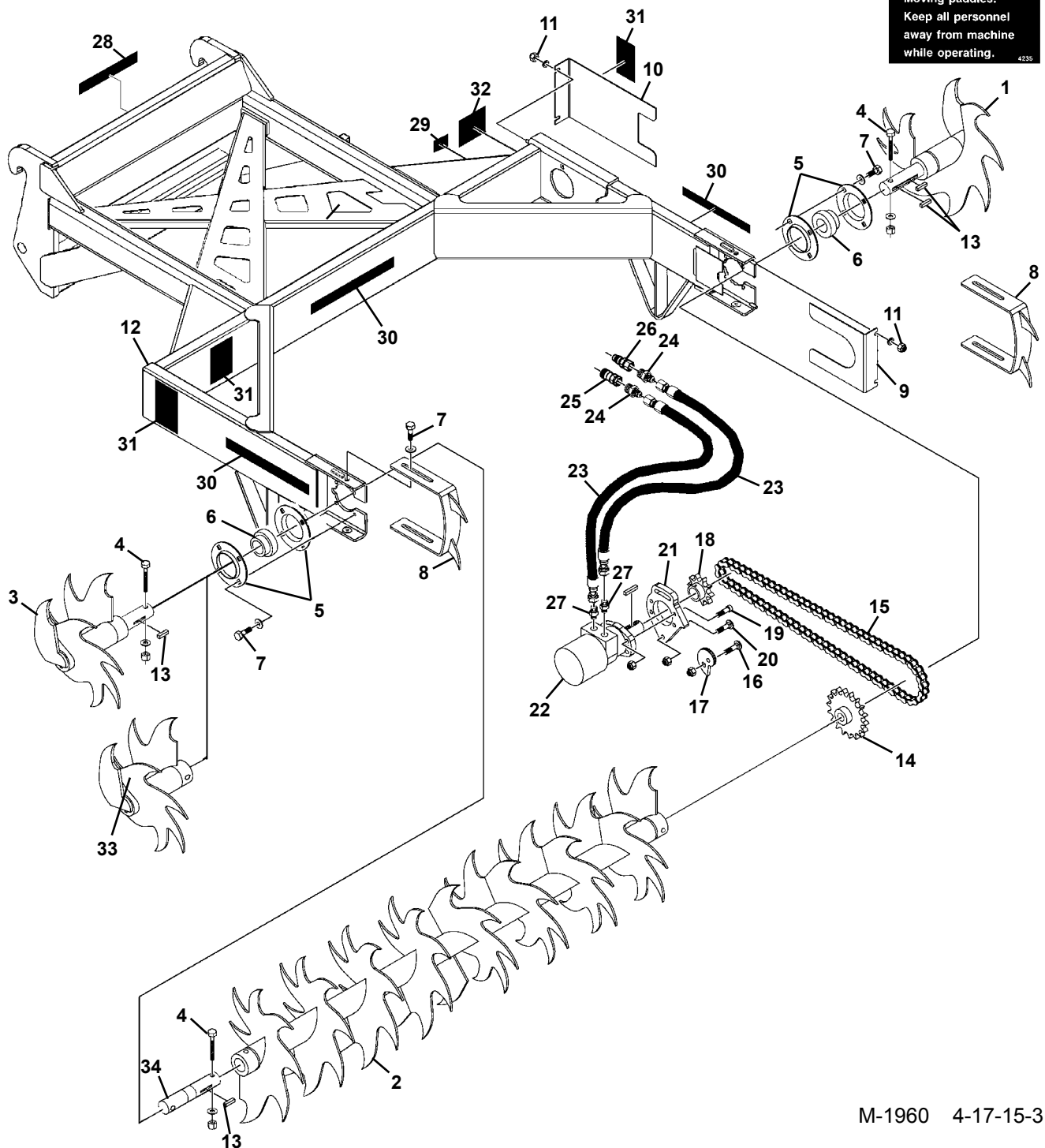
| <u>ITEM</u> | <u>QTY.</u> | <u>PART NO.</u> | <u>DESCRIPTION</u> |
|-------------|-------------|-----------------|--|
| 1 | 1 | 105447 | Blade, Left End |
| 2 | 1 | 105448 | Blade, Center |
| 3 | 1 | 105449 | Blade, Right End - Serial Number 400009 & DOWN |
| 4 | 3 | 1051 | .38" UNC x 3.00" Hex Capscrew |
| | 3 | 1525 | .38" Flat Washer |
| | 3 | 1837 | .38" UNC Deformed Lock Nut |
| 5 | 2 | 89129 | Flangette Set |
| | - | 6616 | Replacement Grease Fitting |
| 6 | 2 | 89127 | Ball Bearing With Collar |
| | - | 1624 | Replacement Set Screw |
| 7 | 12 | 1088 | .50" UNC x 1.00 Hex Capscrew |
| | 12 | 1646 | .50" Hard Flat Washer |
| 8 | 2 | 33427 | Shoe (Depth Guide) |
| 9 | 1 | 15751 | Bottom Chain Cover |
| 10 | 1 | 32849 | Top Chain Cover |
| 11 | 4 | 1837 | .38" UNC Deformed Lock Nut |
| | 4 | 1525 | .38" Flat Washer |
| 12 | 1 | 106133 | Silage Defacer Frame |
| 13 | 3 | 105482 | Square Key, .38" x 1.75" |
| 14 | 1 | 32905 | Sprocket, 18 Tooth, No. 80 |
| 15 | 1 | 32906 | Drive Chain, No. 80, 73 Pitches |
| | - | 53298 | Replacement Master Link |
| 16 | 1 | 1872 | .50" UNC X 1.50" Carriage Bolt |
| | 1 | 1790 | .50" UNC Serrated Flange Lock Nut |
| 17 | 1 | 32848 | Cam Lock |
| 18 | 1 | 33249 | Sprocket, 10 Tooth, No. 80 |
| 19 | 4 | 22336 | .50" UNC x 1.50" Socket Head Capscrew, Grade 8 |
| | 4 | 1228 | .50" UNC Hex Nut |
| 20 | 2 | 1872 | .50" UNC X 1.50" Carriage Bolt |
| | 2 | 1790 | .50" UNC Serrated Flange Lock Nut |

SILAGE DEFACER

ASSEMBLY #12871

DIAGRAM 2 OF 2

DANGER STAND CLEAR



M-1960 4-17-15-3

SILAGE DEFACER

ASSEMBLY #12871

LIST 2 OF 2

| <u>ITEM</u> | <u>QTY.</u> | <u>PART NO.</u> | <u>DESCRIPTION</u> |
|-------------|-------------|-----------------|--|
| 21 | 1 | 32847 | Motor Mounting Plate |
| 22 | 1 | 33200 | Motor |
| | | - | 5662 Replacement Key |
| 23 | 2 | 38235 | Hose .62" x 72" 12FJX-12FJX |
| 24 | 2 | 3419 | Straight Connector, 12MBo-12MJ |
| 25 | 1 | 22518 | Female Quick Coupler |
| 26 | 1 | 22519 | Male Quick Coupler |
| 27 | 2 | 3286 | Straight Connector, 10MBo-12MJ |
| | 28 | 1 | Varies Logo |
| 29 | 1 | 4338 | Made in USA Decal |
| 30 | 3 | 4105 | Danger Stand Clear Decal |
| 31 | 3 | 4235 | Moving Paddles Danger Decal |
| 32 | 1 | ----- | Serial Number Identification Tag Location |
| 33 | 1 | 120356 | Blade, Right End - Serial Number 400010 & UP |
| 34 | 1 | 120354 | Adapter Shaft - Serial Number 400010 & UP |

M-1961 4-17-15-3

SILAGE DEFACER

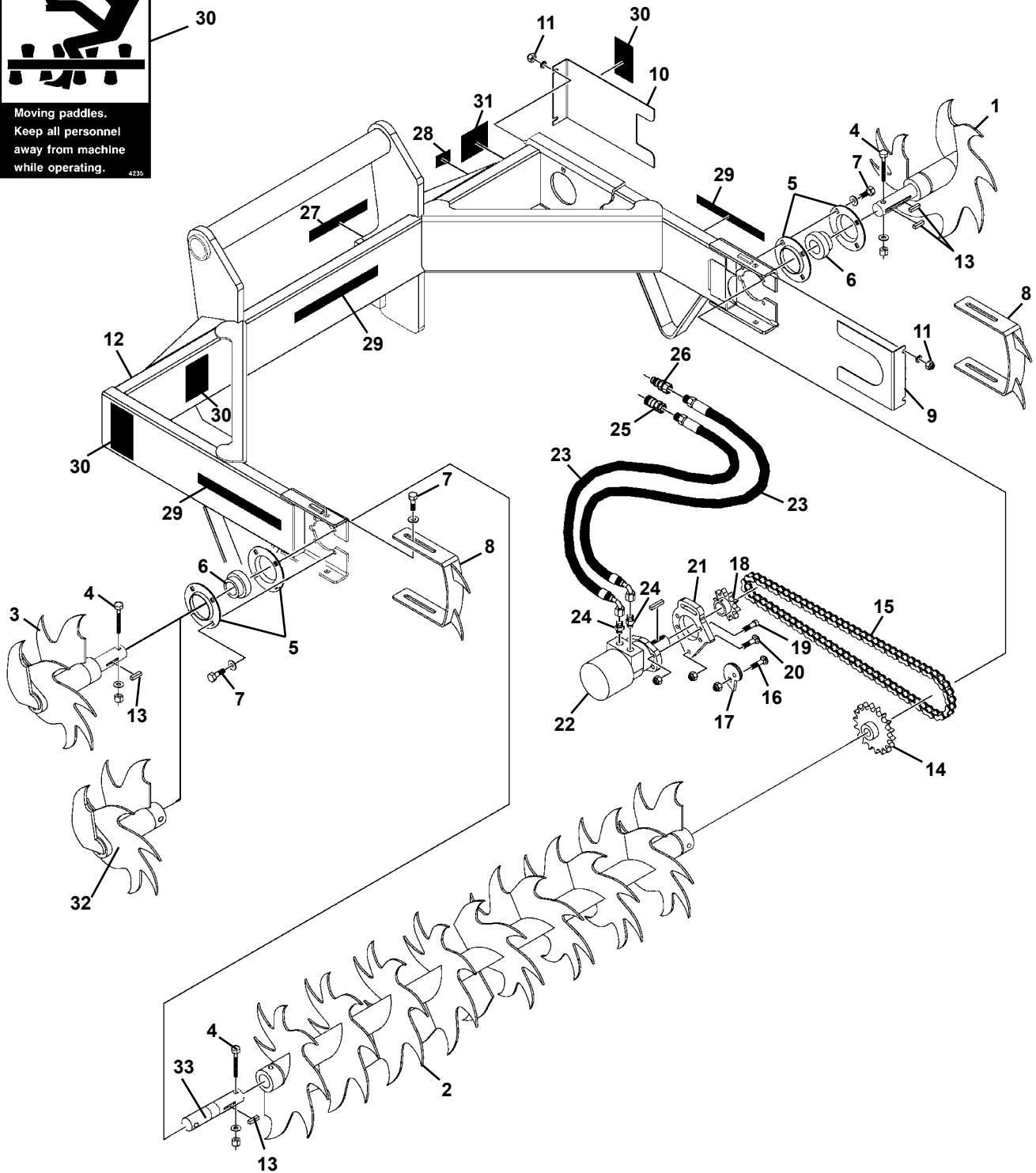
ASSEMBLY #12894

DIAGRAM 1 OF 2



DANGER STAND CLEAR

29



M-1934 4-17-15-3

SILAGE DEFACER

ASSEMBLY #12894

LIST 1 OF 2

| <u>ITEM</u> | <u>QTY.</u> | <u>PART NO.</u> | <u>DESCRIPTION</u> |
|-------------|-------------|-----------------|--|
| 1 | 1 | 105447 | Blade, Left End |
| 2 | 1 | 105448 | Blade, Center |
| 3 | 1 | 105449 | Blade, Right End - Serial Number 400009 & DOWN |
| 4 | 3 | 1051 | .38" UNC x 3.00" Hex Capscrew |
| | 3 | 1525 | .38" Flat Washer |
| | 3 | 1837 | .38" UNC Deformed Lock Nut |
| 5 | 2 | 89129 | Flangette Set |
| | - | 6616 | Replacement Grease Fitting |
| 6 | 2 | 89127 | Ball Bearing With Collar |
| | - | 1624 | Replacement Set Screw |
| 7 | 12 | 1088 | .50" UNC x 1.00 Hex Capscrew |
| | 12 | 1646 | .50" Hard Flat Washer |
| 8 | 2 | 33427 | Shoe (Depth Guide) |
| 9 | 1 | 15751 | Bottom Chain Cover |
| 10 | 1 | 32849 | Top Chain Cover |
| 11 | 4 | 1837 | .38" UNC Deformed Lock Nut |
| | 4 | 1525 | .38" Flat Washer |
| 12 | 1 | 15728 | Silage Defacer Frame |
| 13 | 3 | 105482 | Square Key, .38" x 1.75" |
| 14 | 1 | 32905 | Sprocket, 18 Tooth, No. 80 |
| 15 | 1 | 32906 | Drive Chain, No. 80, 73 Pitches |
| | - | 53298 | Replacement Master Link |
| 16 | 1 | 1872 | .50" UNC X 1.50" Carriage Bolt |
| | 1 | 1790 | .50" UNC Serrated Flange Lock Nut |
| 17 | 1 | 32848 | Cam Lock |
| 18 | 1 | 33249 | Sprocket, 10 Tooth, No. 80 |
| 19 | 4 | 22336 | .50" UNC x 1.50" Socket Head Capscrew, Grade 8 |
| | 4 | 1228 | .50" UNC Hex Nut |
| 20 | 2 | 1872 | .50" UNC X 1.50" Carriage Bolt |
| | 2 | 1790 | .50" UNC Serrated Flange Lock Nut |

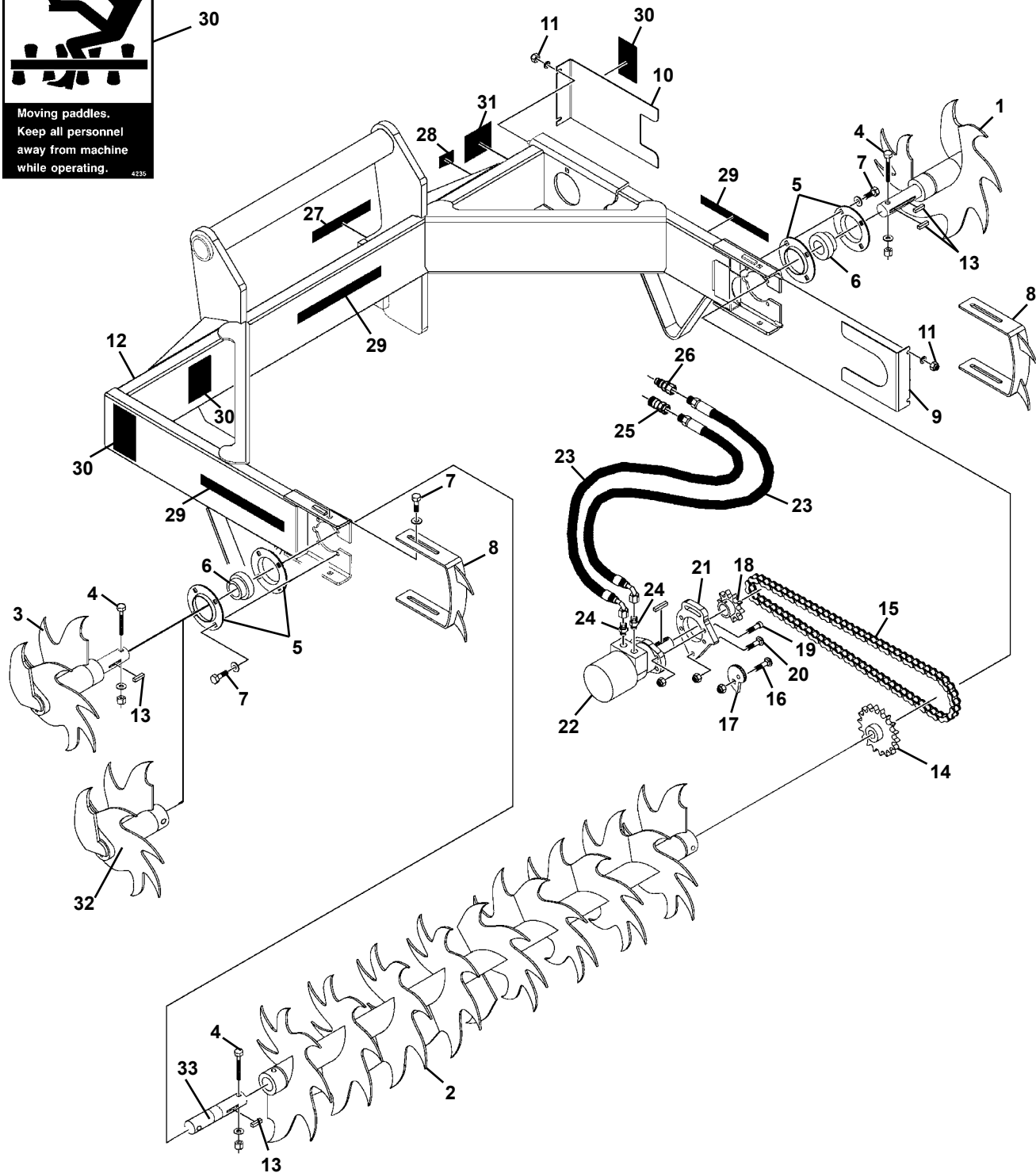
SILAGE DEFACER

ASSEMBLY #12894

DIAGRAM 2 OF 2



DANGER STAND CLEAR 29



SILAGE DEFACER

ASSEMBLY #12894

LIST 2 OF 2

| <u>ITEM</u> | <u>QTY.</u> | <u>PART NO.</u> | <u>DESCRIPTION</u> |
|-------------|-------------|-----------------|--|
| 21 | 1 | 32847 | Motor Mounting Plate |
| 22 | 1 | 33200 | Motor |
| | - | 5662 | Replacement Key |
| 23 | 2 | 38026 | Hose .62" x 90" 10FJX90°-12MBo |
| 24 | 2 | 3431 | Straight Connector, 10MBo-10MJ |
| 25 | 1 | 22518 | Female Quick Coupler |
| 26 | 1 | 22519 | Male Quick Coupler |
| 27 | 1 | Varies | Logo |
| 28 | 1 | 4338 | Made in USA Decal |
| 29 | 3 | 4105 | Danger Stand Clear Decal |
| 30 | 3 | 4235 | Moving Paddles Danger Decal |
| 31 | 1 | ----- | Serial Number Identification Tag Location |
| 32 | 1 | 120356 | Blade, Right End - Serial Number 400010 & UP |
| 33 | 1 | 120354 | Adapter Shaft - Serial Number 400010 & UP |



(563) 922-2981
(800) 456-7100

www.paladinattachments.com