



INSTALLATION INSTRUCTIONS

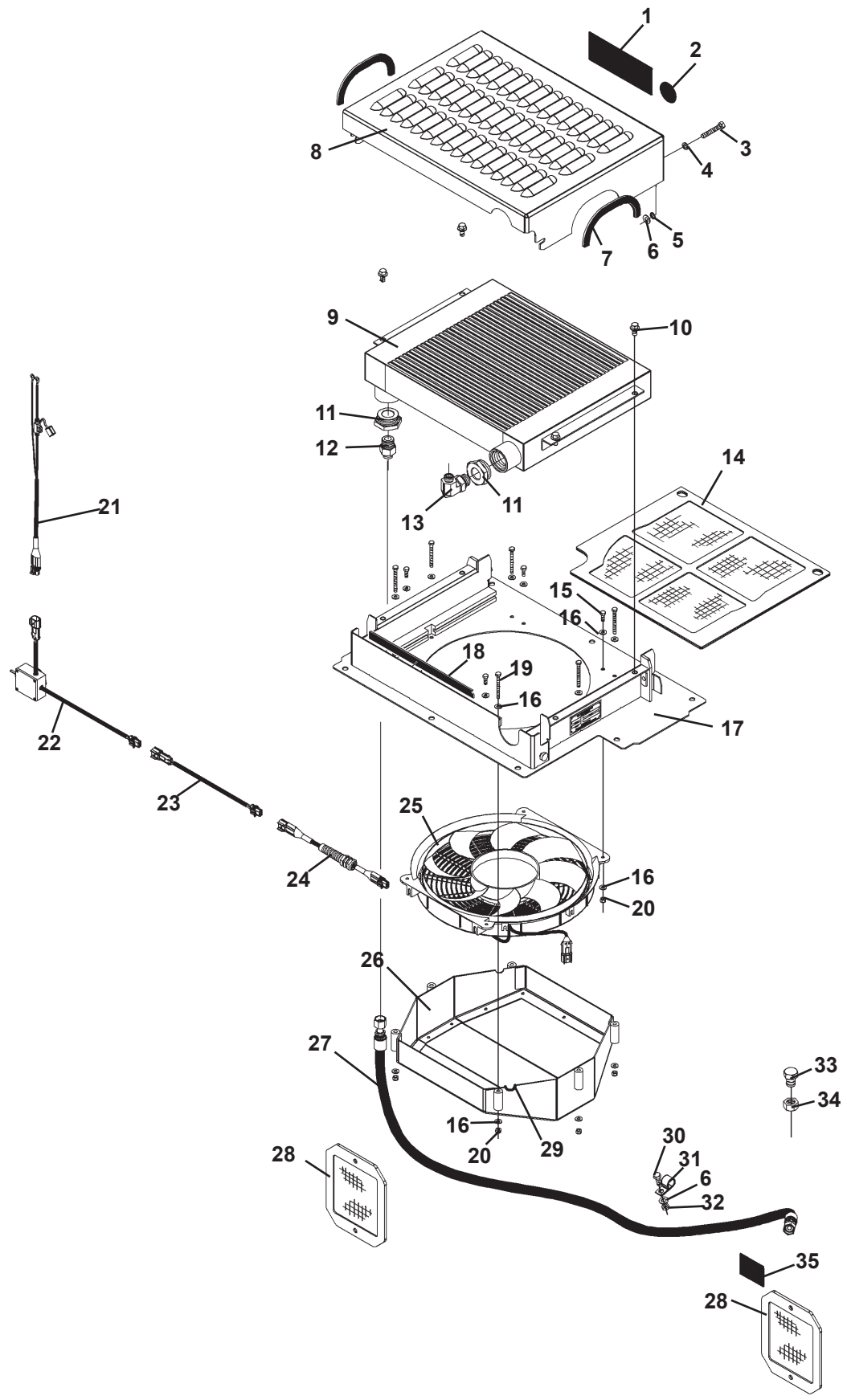
OIL COOLER KITS

#115851 & #115852 (60" SERIES II MULCHERS)

#115853 & #115854 (72" SERIES II MULCHERS)

Instructions Number: 76366

OIL COOLER ASSEMBLY



OIL COOLER ASSEMBLY

<u>ITEM</u>	<u>REQ'D</u>	<u>PART NO.</u>	<u>DESCRIPTION</u>
1	1	40591	Danger Decal, Rotating Drum Hazard
2	1	43307	Mandatory Read Manual Decal
3	2	1048	.38" UNC X 2.25" Hex Capscrew
4	2	10093	.38" Nord Lock Washer
5	2	10242	.38" External Retaining Ring
6	3	1525	.38" Flat Washer
7	2	115861	Rubber Edging
8	1	115860	Oil Cooler Cover
9	1	115857	Aluminum Oil Cooler
10	4	1953	.38" UNC X .75" Flangehead Capscrew
11	2	30333	Straight Connector 12FBo-24MBo
12	1	30205	Straight Connector 12MBo-8MFS
13	1	201-375	90° Elbow 8MFS-12MBo
14	1	115859	Pull-Out Screen
15	4	1002	.25" UNC X .75" Hex Capscrew
16	20	1523	.25" Flat Washer
17	1	115862	Cooler Compartment Cover - 60" Mulchers ONLY
	1	115863	Cooler Compartment Cover - 72" Mulchers ONLY
18	1	115769	Foam Strip (60" & 72" Mulchers)
19	6	1009	.25" UNC X 2.50" Hex Capscrew
20	10	1629	.25" UNC Nylock Nut
21	1	110913	Battery Wire Harness - 180" Long
22	1	109887	Oil Cooler Fan Switch
23	1	110507	Loader Arm Wire Harness - 180" Long
24	1	109803	Fan Wire Harness - 96" Long (Install strain relief on wire harness in the "DC/WH" position on 3-line mulcher assemblies or in "WH" position of bulkhead plate on 5-line mulcher assemblies.)
25	1	111230	16" Fan - 12V DC
26	1	115858	Fan Shroud
27	1	38622	Hose, .50" X 60" 8FFS-8FFS - 60" Mulchers ONLY
	1	38623	Hose, .50" X 70" 8FFS-8FFS - 72" Mulchers ONLY
28	2	116759	Air Inlet Screen (Replaces rear maintenance covers using existing hardware.)
29	1	115855	Rubber Grommet (Cut in half before installing.)
30	1	1043	.38" UNC X 1.00" Hex Capscrew
31	1	54900	Single Hose Clamp (Clamps to internal compartment divider.)
32	1	1837	.38" UNC Deformed Lock Nut
33	1	1135	.75" UNC X 1.00" Hex Capscrew (Installed in the "CD" position on bulkhead plate.)
34	1	1936	.75" UNC Deformed Lock Nut
35	1	4132	Check Oil Decal

INSTALLATION AND OPERATION

SERIES II MULCHER COOLER ASSEMBLY

GENERAL INFORMATION

The BRADCO oil cooler can be installed onto your mulcher to prevent overheating of the hydraulic oil in certain skid steer loaders or when working in high temperatures or high altitudes.

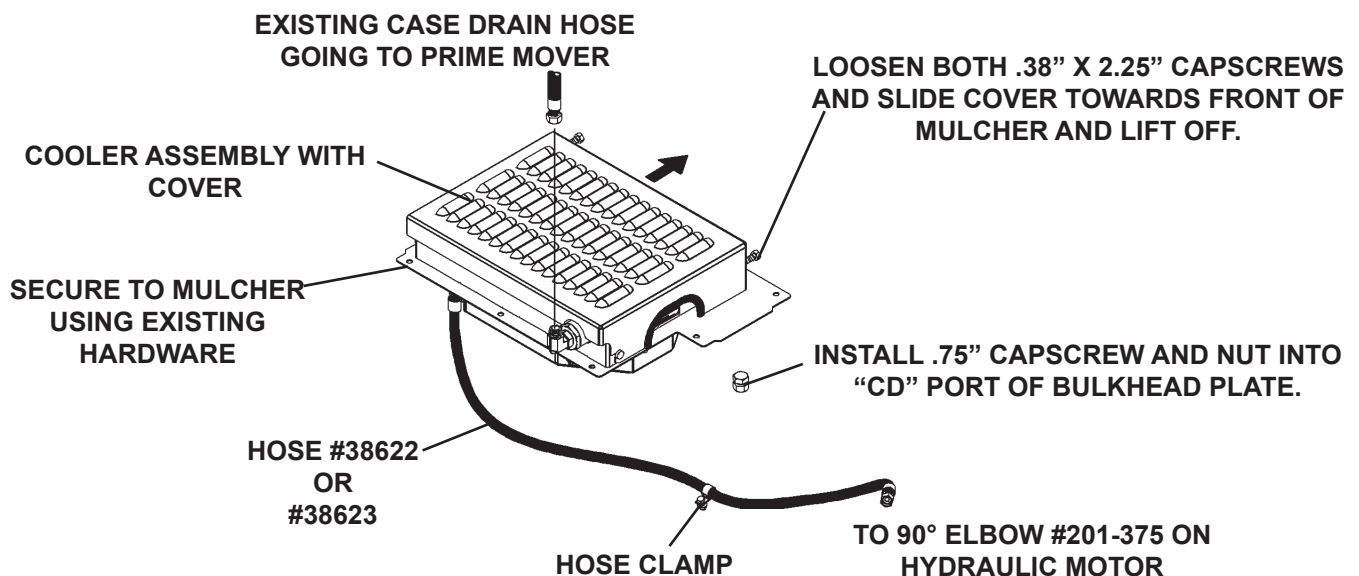
FIELD INSTALL INSTRUCTIONS

1. Remove the left and right compartment covers on the top of your mulcher.

NOTE: If your unit is equipped with a pressure gauge, either support the right compartment cover to prevent strain on the gauge hose or be sure that there is no pressure in the system and disconnect the hose going to the gauge from the motor.

2. Replace the two maintenance covers on the back of the mulcher with the two air inlet screens provided using the existing hardware and install the check oil decal above the right air inlet screen.
3. Disconnect the case drain hose that is going to the prime mover from the bulkhead plate and remove the existing case drain hose going from the motor to the "CD" position on the bulkhead plate. Remove bulkhead fitting from "CD" position in bulkhead plate and install .75" capscREW and nut provided.
4. Install hose provided with oil cooler assembly to the #201-375 elbow on the hydraulic motor, route through the 1.50" hole in compartment divider plate, install single hose clamp over hose end and to tab on left side of divider plate.
5. Install strain relief on harness #109803 through an available "WH" port on the bulkhead plate. Set cooler in place on left side of mulcher and connect hose provided to the #30205 fitting on cooler. Connect wire harness #109803 to fan.
6. Secure oil cooler assembly to left compartment using existing hardware. Reinstall right compartment cover using existing hardware.

NOTE: Reconnect gauge hose if so equipped.



INSTALLATION AND OPERATION

MULCHER COOLER ASSEMBLY

7. Install case drain hose coming from the prime mover to 90° elbow #201-375 on oil cooler assembly.
8. Route wire harness #109803 along side of the return hose going up to the prime mover. Secure the wire harness to the return hose.
9. Connect wire harness #110913 to the power source on your prime mover and route into the cab. Connect to the 6" lead on oil cooler fan switch assembly #109887.
10. Connect wire harness #110507 to the oil cooler fan switch assembly and route wire out of the cab and then up to the top of the loader arm and back down to the quick couplers. Check to ensure the loader arm can be raised and lowered without putting stress on the wire harness. Secure to loader arm. This wire harness will connect to the wire harness coming from the fan.

NOTE: The cooler fan requires a power supply of 15 AMP continuous duty.

NOTE: When disconnecting the mulcher from the prime mover, do not forget to disconnect the wire harness at the coupler location.

The mulcher and cooler are ready for operation.

NOTE: Check to ensure case drain pressure remains under 50 PSI.

OPERATION:

NOTE: Caution must be exercised when starting and stopping mulcher operation. Be sure throttle is at idle and engine RPM has slowed down before engaging or disengaging auxiliary hydraulics.

START UP:

1. Before starting mulcher be sure hydraulic oil is at operating temperature, approximately 100°F.
2. Engage auxiliary hydraulics with engine at idle. Slowly increase engine RPM to full throttle, allowing sufficient time for the drum to obtain operating speed.
3. Begin operation.

SHUT DOWN:

1. Slowly return throttle to idle.
2. Be sure engine RPM has returned to idle before disengaging auxiliary hydraulics.

AIR FLOW MAINTENANCE:

It is recommended to clean out the inside of the left compartment (through air inlet screen area) weekly and also to clean off the pull out screen daily to maintain maximum air flow through the cooler.

To get to the pull out screen you must first remove the oil cooler cover. Loosen the two .38" UNC X 2.25" capscrews on the front side of the oil cooler cover and slide the oil cooler cover towards the front of the mulcher (see diagram) and then lift up, removing it from the cooler. Pull out the screen and clean. Reverse procedure to reinstall.