



OPERATOR'S AND PARTS MANUAL

GRAPPLE BUCKET Hay Grapple

**FOR
RTFL, TLB & WL**



SERIAL NUMBER: _____

MODEL NUMBER: _____

Manual Number: 76805

Part Number: 76805

Rev. 3 August, 2018

TABLE OF CONTENTS

PREFACE.....	3
SAFETY PRECAUTIONS	4-7
SAFETY STATEMENTS	4
GENERAL SAFETY PRECAUTIONS.....	4-6
EQUIPMENT SAFETY PRECAUTIONS	7-8
INSTALLATION AND OPERATION.....	9-10
INSTALLING THE GRAPPLE.....	9-10
REMOVING GRAPPLE ASSEMBLY FROM THE BUCKET.....	10
RECONNECTING GRAPPLE ASSEMBLY	10
SPECIAL OPERATING CONSIDERATIONS	10
MAINTENANCE AND SERVICE.....	11-14
GENERAL INFORMATION.....	11
DAILY	11
EVERY 40 HOURS	11
CYLINDER SEAL REPLACEMENT	12-13
STORAGE	14
LIMITED WARRANTY	15
PARTS	
<u>HAY GRAPPLE BUCKETS</u>	
1.75 CUBIC YARD HAY GRAPPLE BUCKET ASSEMBLY #307150	18-19
1.75 CUBIC YARD HAY GRAPPLE BUCKET ASSEMBLY #308403	20-21
2.15 CUBIC YARD HAY GRAPPLE BUCKET ASSEMBLY #308001	22-23
<u>CUTTING EDGES</u>	
96" BOLT-ON ASSEMBLY #11002	24
96" BOLT-ON ASSEMBLY #14611	25
<u>CYLINDERS</u>	
CYLINDER ASSEMBLY #33524	26-27

FOREWORD

Although Bradco has various hay grapple buckets available, we are continually designing new sizes and mountings. If your combination is not listed, please contact the factory. We have extensive mounting information available to generate the product you need.

Below is a listing of the hay grapple bucket assemblies that are available. See the "Parts" section of this manual for the assemblies "Shown".

DESCRIPTION & MOUNT	ASSEMBLY #
CATERPILLAR	
1.75 Cubic Yard Hay Grapple Bucket - CAT IT/TH (Shown)	307150
JCB	
1.75 Cubic Yard Hay Grapple Bucket - JCB Q-FIT (Shown)	308403
MANITOU	
2.15 Cubic Yard Hay Grapple Bucket - MANITOU (Shown)	308001
NEW HOLLAND	
1.75 Cubic Yard Hay Grapple Bucket - NEW HOLLAND Q-FIT (Shown)	308403

PREFACE

GENERAL COMMENTS

Congratulations on the purchase of your new attachment! This product was carefully designed and manufactured to give you many years of dependable service. Only minor maintenance (such as cleaning and lubricating) is required to keep it in top working condition. Be sure to observe all maintenance procedures and safety precautions in this manual and on any safety decals located on the product and on any equipment on which the attachment is mounted.

This manual has been designed to help you do a better, safer job. Read this manual carefully and become familiar with its contents.

WARNING! Never let anyone operate this unit without reading the "Safety Precautions" and "Operating Instructions" sections of this manual.



Always choose hard, level ground to park the vehicle on and set the brake so the unit cannot roll.

Unless noted otherwise, right and left sides are determined from the operator's control position when facing the attachment.

NOTE: The illustrations and data used in this manual were current (according to the information available to us) at the time of printing, however, we reserve the right to redesign and change the attachment as may be necessary without notification.

BEFORE OPERATION

The primary responsibility for safety with this equipment falls to the operator. Make sure the equipment is operated only by trained individuals that have read and understand this manual. If there is any portion of this manual or function you do not understand, contact your local authorized dealer or the manufacturer to obtain further assistance. Keep this manual available for reference. Provide the manual to any new owners and/or operators.

SAFETY ALERT SYMBOL



This is the "Safety Alert Symbol" used by this industry. This symbol is used to warn of possible injury. Be sure to read all warnings carefully. They are included for your safety and for the safety of others working with you.

SERVICE

Use only manufacturer replacement parts. Substitute parts may not meet the required standards.

Record the model and serial number of your unit on the cover of this manual. The parts department needs this information to insure that you receive the correct parts.

SOUND AND VIBRATION

Sound pressure levels and vibration data for this attachment are influenced by many different parameters: some items are listed below (not inclusive):

- prime mover type, age, condition, with or without cab enclosure and configuration
- operator training, behavior, stress level
- job site organization, working material condition, environment

Based on the uncertainty of the prime mover, operator, and job site, it is not possible to get precise machine and operator sound pressure levels or vibration levels for this attachment.

NOTE: A list of all Paladin Patents can be found at <http://www.paladinattachments.com/patents.asp>.

M-934 10-22-13-5

SAFETY STATEMENTS



THIS SYMBOL BY ITSELF OR WITH A WARNING WORD THROUGHOUT THIS MANUAL IS USED TO CALL YOUR ATTENTION TO INSTRUCTIONS INVOLVING YOUR PERSONAL SAFETY OR THE SAFETY OF OTHERS. FAILURE TO FOLLOW THESE INSTRUCTIONS CAN RESULT IN INJURY OR DEATH.



DANGER

THIS SIGNAL WORD INDICATES A HAZARDOUS SITUATION WHICH, IF NOT AVOIDED, WILL RESULT IN DEATH OR SERIOUS INJURY.



WARNING

THIS SIGNAL WORD INDICATES A HAZARDOUS SITUATION WHICH, IF NOT AVOIDED, COULD RESULT IN DEATH OR SERIOUS INJURY.



CAUTION

THIS SIGNAL WORD INDICATES A HAZARDOUS SITUATION WHICH, IF NOT AVOIDED, COULD RESULT IN MINOR OR MODERATE INJURY.

NOTICE

NOTICE IS USED TO ADDRESS PRACTICES NOT RELATED TO PHYSICAL INJURY.

GENERAL SAFETY PRECAUTIONS

WARNING!



READ MANUAL PRIOR TO INSTALLATION

Improper installation, operation, or maintenance of this equipment could result in serious injury or death. Operators and maintenance personnel should read this manual, as well as all manuals related to this equipment and the prime mover thoroughly before beginning installation, operation, or maintenance. **FOLLOW ALL SAFETY INSTRUCTIONS IN THIS MANUAL AND THE PRIME MOVER'S MANUAL(S).**



READ AND UNDERSTAND ALL SAFETY STATEMENTS

Read all safety decals and safety statements in all manuals prior to operating or working on this equipment. Know and obey all OSHA regulations, local laws, and other professional guidelines for your operation. Know and follow good work practices when assembling, maintaining, repairing, mounting, removing, or operating this equipment.



KNOW YOUR EQUIPMENT

Know your equipment's capabilities, dimensions, and operations before operating. Visually inspect your equipment before you start, and never operate equipment that is not in proper working order with all safety devices intact. Check all hardware to ensure it is tight. Make certain that all locking pins, latches, and connection devices are properly installed and secured. Remove and replace any damaged, fatigued, or excessively worn parts. Make certain all safety decals are in place and are legible. Keep decals clean, and replace them if they become worn or hard to read.

GENERAL SAFETY PRECAUTIONS

WARNING!



PROTECT AGAINST FLYING DEBRIS

Always wear proper safety glasses, goggles, or a face shield when driving pins in or out, or when any operation causes dust, flying debris, or any other hazardous material.

WARNING!



LOWER OR SUPPORT RAISED EQUIPMENT

Do not work under raised booms without supporting them. Do not use support material made of concrete blocks, logs, buckets, barrels, or any other material that could suddenly collapse or shift positions. Make sure support material is solid, not decayed, warped, twisted, or tapered. Lower booms to ground level or on blocks. Lower booms and attachments to the ground before leaving the cab or operator's station.

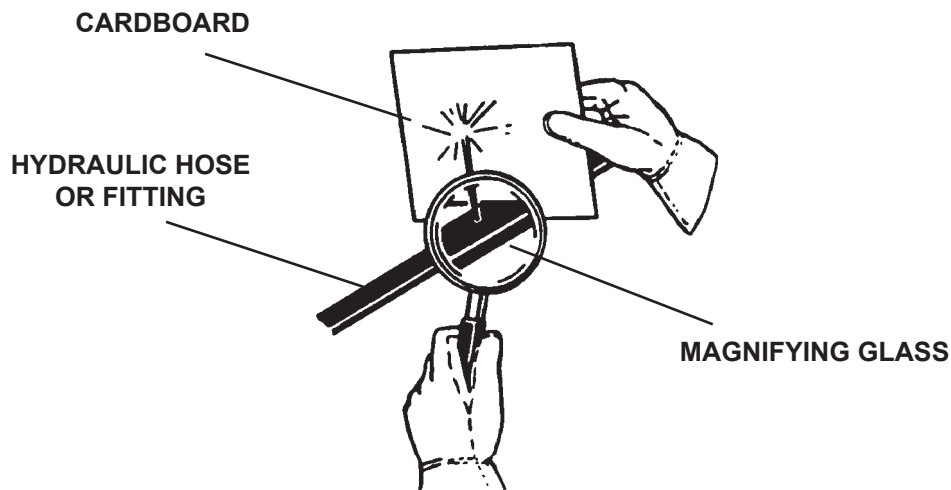
WARNING!



USE CARE WITH HYDRAULIC FLUID PRESSURE

Hydraulic fluid under pressure can penetrate the skin and cause serious injury or death. Hydraulic leaks under pressure may not be visible. Before connecting or disconnecting hydraulic hoses, read your prime mover's operator's manual for detailed instructions on connecting and disconnecting hydraulic hoses or fittings.

- Keep unprotected body parts, such as face, eyes, and arms as far away as possible from a suspected leak. Flesh injected with hydraulic fluid may develop gangrene or other permanent disabilities.
- If injured by injected fluid, see a doctor at once. If your doctor is not familiar with this type of injury, ask him or her to research it immediately to determine proper treatment.
- Wear safety glasses, protective clothing, and use a piece of cardboard or wood when searching for hydraulic leaks. **DO NOT USE YOUR HANDS! SEE ILLUSTRATION.**



GENERAL SAFETY PRECAUTIONS

WARNING!



DO NOT MODIFY MACHINE OR ATTACHMENTS

Modifications may weaken the integrity of the attachment and may impair the function, safety, life, and performance of the attachment. When making repairs, use only the manufacturer's genuine parts, following authorized instructions. Other parts may be substandard in fit and quality. Never modify any ROPS (Roll Over Protection Structure) or FOPS (Falling Object Protective Structure) equipment or device. Any modifications must be authorized in writing by the manufacturer.

WARNING!



SAFELY MAINTAIN AND REPAIR EQUIPMENT

- Do not wear loose clothing or any accessories that can catch in moving parts. If you have long hair, cover or secure it so that it does not become entangled in the equipment.
- Work on a level surface in a well-lit area.
- Use properly grounded electrical outlets and tools.
- Use the correct tools for the job at hand. Make sure they are in good condition for the task required.
- Wear the protective equipment specified by the tool manufacturer.



SAFELY OPERATE EQUIPMENT

Do not operate equipment until you are completely trained by a qualified operator in how to use the controls, know its capabilities, dimensions, and all safety requirements. See your machine's manual for these instructions.

- Keep all step plates, grab bars, pedals, and controls free of dirt, grease, debris, and oil.
- Never allow anyone to be around the equipment when it is operating.
- Do not allow riders on the attachment or the prime mover.
- Do not operate the equipment from anywhere other than the correct operator's position.
- Never leave equipment unattended with the engine running, or with this attachment in a raised position.
- Do not alter or remove any safety feature from the prime mover or this attachment.
- Know your work site safety rules as well as traffic rules and flow. When in doubt on any safety issue, contact your supervisor or safety coordinator for an explanation.

WARNING!



CALIFORNIA PROPOSITION 65 WARNING

This product may contain a chemical known to the state of California to cause cancer, or birth defects or other reproductive harm. www.P65Warnings.ca.gov

EQUIPMENT SAFETY PRECAUTIONS

WARNING! KNOW WHERE UTILITIES ARE



Observe overhead electrical and other utility lines. Be sure equipment will clear them. When digging, call your local utilities for location of buried utility lines, gas, water, and sewer, as well as any other hazard you may encounter.

WARNING! EXPOSURE TO RESPIRABLE CRYSTALLINE SILICA DUST ALONG WITH OTHER HAZARDOUS DUSTS MAY CAUSE SERIOUS OR FATAL RESPIRATORY DISEASE.



It is recommended to use dust suppression, dust collection and if necessary personal protective equipment during the operation of any attachment that may cause high levels of dust.

WARNING! REMOVE PAINT BEFORE WELDING OR HEATING



Hazardous fumes/dust can be generated when paint is heated by welding, soldering or using a torch. Do all work outside or in a well ventilated area and dispose of paint and solvent properly. Remove paint before welding or heating.

When sanding or grinding paint, avoid breathing the dust. Wear an approved respirator. If you use solvent or paint stripper, remove stripper with soap and water before welding. Remove solvent or paint stripper containers and other flammable material from area. Allow fumes to disperse at least 15 minutes before welding or heating.

WARNING! END OF LIFE DISPOSAL



At the completion of the useful life of the unit, drain all fluids and dismantle by separating the different materials (rubber, steel, plastic, etc.). Follow all federal, state and local regulations for recycling and disposal of the fluid and components.



WORKING WITH THE ATTACHMENT

- Never use your attachment for a work platform or personnel carrier.
- Specified lift capacities must not be exceeded, otherwise machine stability is not sufficient. Always observe lift capacity limits listed in machine specifications.
- An operator must not use drugs or alcohol, which can change his or her alertness or coordination. An operator taking prescription or over-the-counter drugs should seek medical advice on whether or not he or she can safely operate equipment.
- Always check locking pins before operating any attachment.
- Never lift, move, or swing a loaded attachment over anyone.
- Never undercut a high bank. When working at the base of a bank, overhang, or stockpile, avoid dangers such as rock or earth slides, overhanging trees, or a cave-in, by proper job operation.
- Be careful when handling loose objects. Lifting too high, or rolling the attachment too far back, could result in these objects sliding backward down the arms onto the operator compartment.
- Carry the attachment low for maximum stability and visibility.
- When operating on slopes, drive up and down, not across. Avoid steep hillside operation, which could cause the prime mover to overturn.
- Reduce speed when driving over rough terrain, on a slope, or turning, to avoid overturning the vehicle.

EQUIPMENT SAFETY PRECAUTIONS



HAY GRAPPLE BUCKET

- Never stack loads on uneven ground. Loads stacked on uneven ground can topple.
- Some applications require the boom to be extended a minimum of 12" for full operation of the hay grapple bucket. Failure to extend the boom could cause damage to the operating machine.



TRANSPORTING THE ATTACHMENT

- Travel only with the attachment in a safe transport position to prevent uncontrolled movement. Drive slowly over rough ground and on slopes.
- When transporting on a trailer secure attachment at recommended tie down locations using tie down accessories that are capable of maintaining attachment stability.
- When driving on public roads use safety lights, reflectors, Slow Moving Vehicle signs etc., to prevent accidents. Check local government regulations that may affect you.
- Do not drive close to ditches, excavations, etc., cave in could result.
- Do not smoke when refueling the prime mover. Allow room in the gas tank for expansion. Wipe up any spilled fuel. Secure cap tightly when done.



MAINTAINING THE ATTACHMENT

- Before performing maintenance (unless otherwise specified), lower the attachment to the ground, turn off the engine, remove the key and apply the brakes.
- Never perform any work on the attachment unless you are authorized and qualified to do so. Always read the operator service manual's before any repair is made. After completing maintenance or repair, check for correct functioning of the attachment. If not functioning properly, always tag "DO NOT OPERATE" until all problems are corrected.
- Worn, damaged, or illegible safety decals must be replaced. New safety decals can be ordered from your local dealer or the manufacturer.
- Never make hydraulic repairs while the system is under pressure. Serious personal injury or death could result.
- Never work under a raised attachment.

INSTALLATION AND OPERATION

The Major hay grapples were designed with a removable grapple assembly. This feature allows you to operate either the bucket or the grapple, and makes the attachment easier to transport. The following instructions will assist you in the initial installation of the grapple assembly onto your bucket, and with grapple assembly removal and re-installation.

Find the hay grapple diagram and parts list for the assembly you have received. Study the diagram and parts to familiarize yourself with the names of the various parts. This knowledge will assist you in understanding these instructions.

INSTALLING THE GRAPPLE

1. Position the bucket on a hard level surface where there is a hoist or other lifting device available that is capable of lifting at least 500 pounds.
2. Install the grapple arm support onto the back of the bucket by positioning the bottom of the support onto the mounting pin. Secure in place with the pin and cotter pin.
3. Install the spill guard onto the grapple arm supports with the four .50" pins and cotter pins.
4. Secure the grapple arms to the grapple arm supports with the 1.50" pivot pins, cap-screws, and nylock nuts.
5. Secure the barrel end of each cylinder to the grapple arm support with the two longer 1.00" cylinder pins and hardware, and the rod end to the grapple arms with the shorter 1.00" pivot pins and hardware.

NOTE: It may be necessary to rotate the grapple arms in an upward motion to allow for connection of the cylinder rod ends onto the grapple arms. The cylinders will act as a strut to maintain a temporary, semi-fixed position of the grapple arms to the grapple arm supports.

6. Using the hoist or other lifting device, center the tine bar assembly (with tines attached) on the mounting plates on the grapple arms. Secure in place with the two tine bar mounting plates and hardware.

NOTE: Verify that the tine bar assembly is centered on the grapple arms before tightening all hardware and checking that all pivot pins are secure.

7. Install the four 90° elbows into the hydraulic cylinders, followed by the required hoses for your grapple assembly.
8. Route the hoses down the inside of the grapple arm supports and to the middle of the bucket through the hose clamps located on the support and the back of the bucket.

NOTE: Some applications may require the hoses be routed through the mounting brackets on the back of the bucket. Divide the hoses equally between the clamps before tightening.

9. Connect the rod end hoses together and the barrel end hoses together using the tees provided. Install the power and return hoses onto the middle of the tees followed by the straight connectors, couplers and coupler covers.

10. Attach the hay grapple to the prime mover, following all safety practices and the instructions for connecting an attachment in your prime mover operator's manual. Run cylinders through their full cycle to purge any air from the system. Check for leaks (as described in the safety section of this manual) and readjust hose lengths, as necessary, to avoid pinching or chafing of the hydraulic hoses.

REMOVING GRAPPLE ASSEMBLY FROM THE BUCKET

1. Position the bucket on a hard level surface where there is a hoist or other lifting device available that is capable of lifting at least 500 pounds.
2. Disconnect power and return hoses from the prime mover and install coupler covers to prevent contaminants from entering the hydraulic system.
3. Remove hoses from the clamps on the back of the bucket.

NOTE: On some applications, the hoses may be routed through the mounting brackets on the back of the bucket. These applications will require disconnecting one set of hoses from the tees to allow them to be routed back through the brackets for grapple removal. Reconnect hoses to prevent contaminants from entering the system.

4. Once the hydraulics have been properly disconnected from the bucket, securely attach the hoist or other lifting device to the grapple assembly. Remove the two 1.50" pins securing the grapple arm supports to the bucket, and carefully lift the grapple up and off the bucket.
5. Store the grapple assembly in a clean dry area. If the grapple assembly is to be stored for any length of time, see the "Storage" section of this manual for additional procedures.

RECONNECTING GRAPPLE ASSEMBLY

1. Position the bucket on a hard level surface where there is a hoist or other lifting device available that is capable of lifting at least 500 pounds.
2. With the grapple assembly securely attached to the hoist or other lifting device, lift the grapple and position the bottom of the grapple arm supports onto the back of the bucket mounting pins. Secure the grapple assembly to the bucket by installing the 1.50" pins through the grapple arm supports and mounting ears on the top of the bucket.
3. Route the hoses down the inside of the grapple arm supports and to the middle of the bucket through the hose clamps located on the support and the back of the bucket.

NOTE: On some applications it may be necessary to disconnect the hoses from the tees, to route them through the mounting brackets on the back of the bucket. Divide the hoses equally between the clamps, before tightening.

SPECIAL OPERATING CONSIDERATIONS

Never stack loads on uneven ground. Loads stacked on uneven ground can topple.

Some applications require the boom to be extended a minimum of 12" for full operation of the hay grapple bucket. Failure to extend the boom could cause damage to the operating machine.

MAINTENANCE & SERVICE

GENERAL INFORMATION

Regular maintenance is the key to long equipment life and safe operation. Maintenance requirements have been kept to an absolute minimum. However, it is very important that these maintenance functions be performed as described in this section.

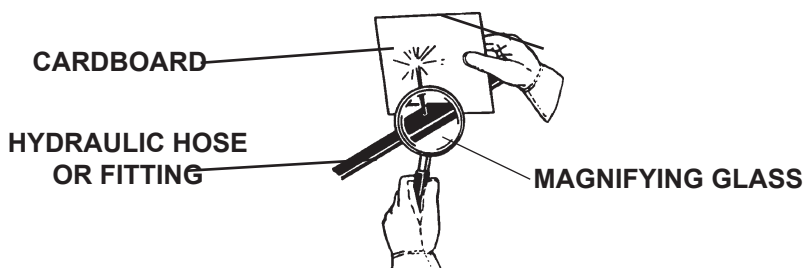
Procedure	Daily	Every 40 Hours
Check all bolts and nuts for tightness.	✓	
Replace any missing bolts or nuts with approved replacement parts.	✓	
Check hydraulic system for hydraulic oil leaks. See procedure below.	✓	
Visually inspect the machine for worn parts or cracked welds, and repair as necessary.	✓	
Check for missing or illegible Safety / Warning Decals.	✓	
Lubricate all grease fittings.		✓

WARNING! Escaping fluid under pressure can have sufficient force to penetrate the skin, causing serious personal injury. Fluid escaping from a very small hole can be almost invisible. Use a piece of cardboard or wood, rather than hands to search for suspected leaks.



Keep unprotected body parts, such as face, eyes, and arms as far away as possible from a suspected leak. Flesh injected with hydraulic fluid may develop gangrene or other permanent disabilities.

If injured by injected fluid, see a doctor at once. If your doctor is not familiar with this type of injury, ask him or her to research it immediately to determine proper treatment.



IMPORTANT: When replacing parts, use only factory-approved replacement parts. Manufacturer will not accept responsibility for use of unapproved parts or accessories, and damages that result from their use.

MAINTENANCE AND SERVICE

CYLINDER SEAL REPLACEMENT

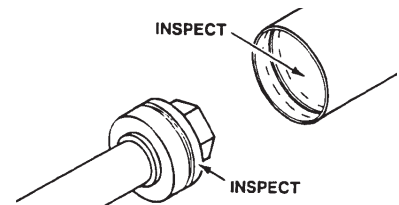
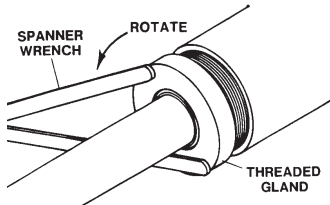
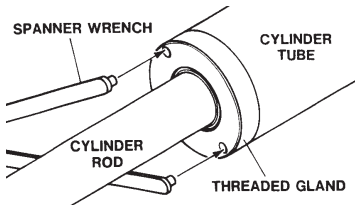
The following information is provided to assist you in the event you should need to repair or rebuild a hydraulic cylinder. When working on hydraulic cylinders, make sure that the work area and tools are clean and free of dirt to prevent contamination of the hydraulic system and damage to the hydraulic cylinders. Always protect the active part of the cylinder rod (the chrome section). Nicks or scratches on the surface of the rod could result in cylinder failure. Clean all parts thoroughly with a cleaning solvent before reassembly.

DISASSEMBLY PROCEDURE

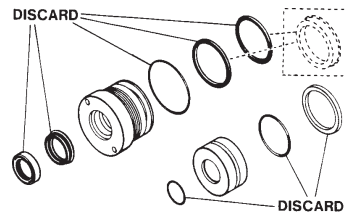
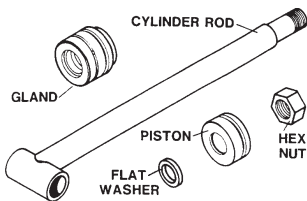
IMPORTANT: Do not contact the active surface of the cylinder rod with the vise. Damage to the rod could result.

THREADED TYPE GLAND

1. Rotate the gland with a spanner wrench counterclockwise until the gland is free of the cylinder tube.
2. Pull the cylinder rod from the cylinder tube and inspect the piston and the bore of the cylinder tube for deep scratches or galling. If damaged, the piston AND the cylinder tube must be replaced.



3. Remove the hex nut, piston, flat washer or spacer tube (if so equipped), and gland from the cylinder rod. If the cylinder rod is rusty, scratched, or bent, it must be replaced.
4. Remove and discard all the old seals.

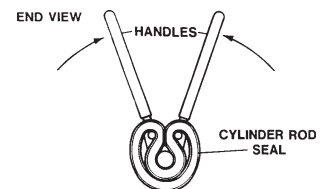
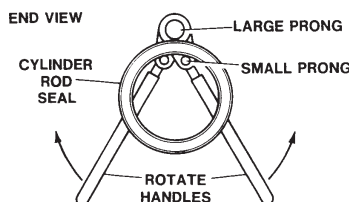
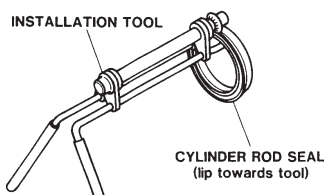


ASSEMBLY PROCEDURE

IMPORTANT: Replace all seals even if they do not appear to be damaged. Failure to replace all seals may result in premature cylinder failure. **NOTE:** Seal kits will service most cylinders of similar bore size and rod diameter.

1. Install the cylinder rod seal in the gland first. Be careful not to damage the seal in the process, as it is somewhat difficult to install.

NOTE: A special installation tool (Part #65349) is available to help with installing the seal. Simply fit the end of the tool over the seal so that the large prong of the tool is on the outside of the seal, and the two smaller prongs on the inside. The lip of the seal should be facing towards the tool. Rotate the handles on the tool around to wrap the seal around the end of the tool.



Rotate the handles on the tool around to wrap the seal around the end of the tool.

10356 10-13-05

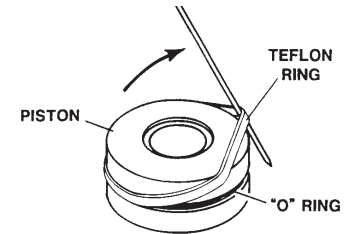
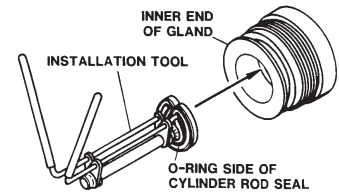
MAINTENANCE AND SERVICE

Now insert the seal into the gland from the inner end. Position the seal in its groove, and release and remove the tool. Press the seal into its seat the rest of the way by hand.

2. Install the new piston ring, rod wiper, O-rings and backup washers, if applicable, on the piston.

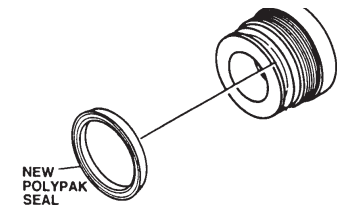
Be careful not to damage the seals. Caution must be used when installing the piston ring. The ring must be stretched carefully over the piston with a smooth, round, pointed tool.

3. After installing the rod seal inside the gland, as shown in step #1, install the external seal.



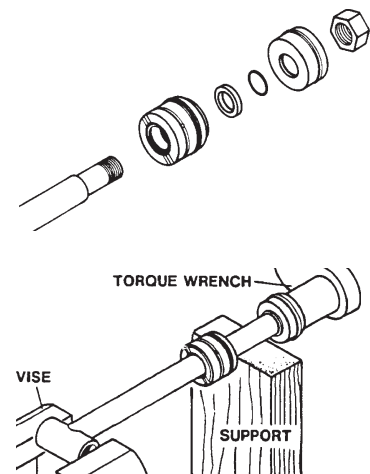
NOTE: Threaded glands may have been equipped with a separate O-ring and backup washer system or a polypak (all in one) type seal. Current seal kits contain a polypak (all in one) type seal to replace the discarded seal types on ALL THREADED GLANDS.

4. Slide the gland onto the cylinder rod, being careful not to damage the rod wiper. Then install the spacer, or flat washer (if so equipped), small o-ring, piston, and hex nut onto the end of the cylinder rod.
5. Secure the cylinder rod (mounting end) in a vise with a support at its center. Torque the nut to the amount shown for the thread diameter of the cylinder rod (see chart).



Thread Diameter	POUNDS - FEET
7/8"	150-200
*1"	230-325
1-1/8"	350-480
1-1/4"	490-670
1-3/8"	670-900
* 1" Thread Diameter WITH 1.25" Rod Diameter	
Min. 230 ft. lbs. Max. 250 ft. lbs.	

IMPORTANT: Do not contact the active surface of the cylinder rod with the vise. Damage to the rod could result.



6. Apply a lubricant (such as Lubriplate #105) to the piston and teflon ring. Insert the cylinder rod assembly into the cylinder tube.

IMPORTANT: Ensure that the piston ring fits squarely into the cylinder tube and piston groove, otherwise the ring may be damaged and a leak will occur.

7. Use a spanner wrench to rotate the gland clockwise into the cylinder. Continue to rotate the gland with the spanner wrench until it is tight.

WARNING!



Cylinders serviced in the field are to be tested for leakage prior to the attachment being placed in work. Failure to test rebuilt cylinders could result in damage to the cylinder and/or the attachment, cause severe personal injury or even death.

STORAGE

GENERAL INFORMATION

The following storage procedure will help you to keep your attachment in top condition. It will also help you get off to a good start the next time your equipment is needed. We therefore strongly recommend that you take the extra time to follow these procedures whenever your attachment will not be used for an extended period of time.

PREPARATION FOR STORAGE

1. Clean the attachment thoroughly, removing all mud, dirt, and grease.
2. Inspect for visible signs of wear, breakage, or damage. Order any parts required, and make the necessary repairs, to avoid delays when starting next season.
3. Tighten all loose nuts, capscrews, and hydraulic connections.
4. Lubricate all grease fittings.
5. Coat the exposed portions of the cylinder rods with grease.
6. Connect the hydraulic couplers together to protect the hydraulic system from contaminants.
7. Touch up all unpainted and exposed areas with paint, to prevent rust.
8. Replace decals, if damaged or in unreadable condition.
9. Store the attachment in a dry and protected place, with a cover, if possible. Leaving the attachment outside will materially shorten its life.

REMOVING FROM STORAGE

1. Remove all protective coverings.
2. Check hydraulic hoses for deterioration, and replace if necessary.

LIMITED WARRANTY

In order to provide you with the most UP-TO-DATE Warranty information, Paladin Warranty Statement and Warranty Procedures along with Warranty Registration and Claim Forms have been moved to our website at www.paladinattachments.com.

**THIS PAGE
IS INTENTIONALLY
BLANK**

PARTS

The following section contains detailed diagrams and parts lists which include your attachment. Please use these diagrams and parts lists to locate replacement parts, prior to contacting the parts department.

When servicing your attachment, remember to use only original manufacturer replacement parts. Substitute parts may not meet the standards required for safe, dependable operation.

To facilitate parts ordering, have the model and serial number of your product ready, to ensure that you receive the correct parts for your specific attachment.

The model and serial number for your attachment should be recorded in the space provided on the cover of this manual. This information may be obtained from the serial number identification plate located on your attachment. **See the parts diagram for your attachment for the location.**

NOTE: Most daily and emergency orders received by 2:00 P.M. will be shipped the same day received, with “Emergency-Machine-Down” orders receiving first priority.



PARTS DEPARTMENT

(734) 996-9116

(800) 456-7100

We Encourage Fax Orders

(734) 996-9014

HAY GRAPPLE BUCKET

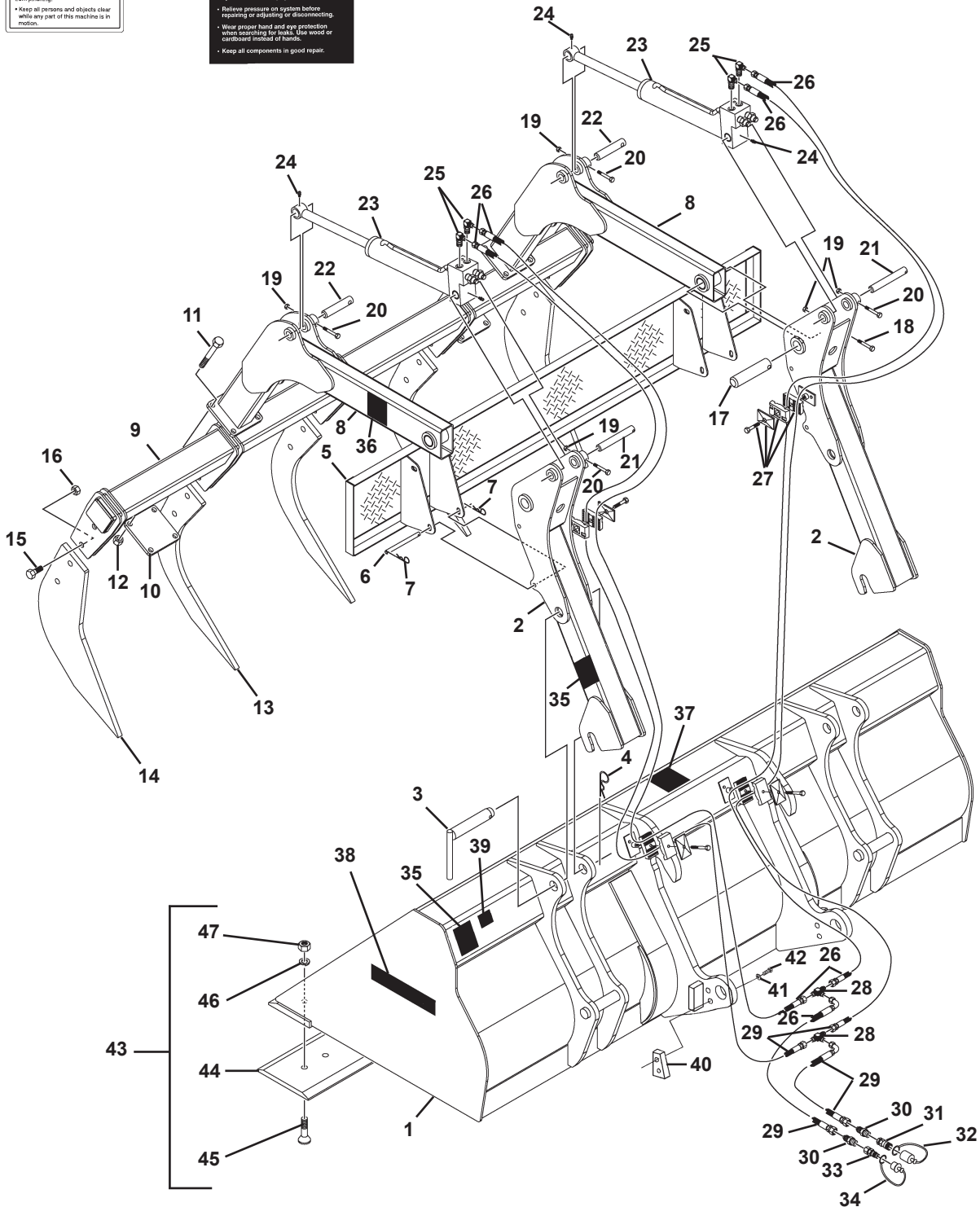
1.75 CUBIC YARD - ASSEMBLY #307150



36



37



M-528 1-26-10-3

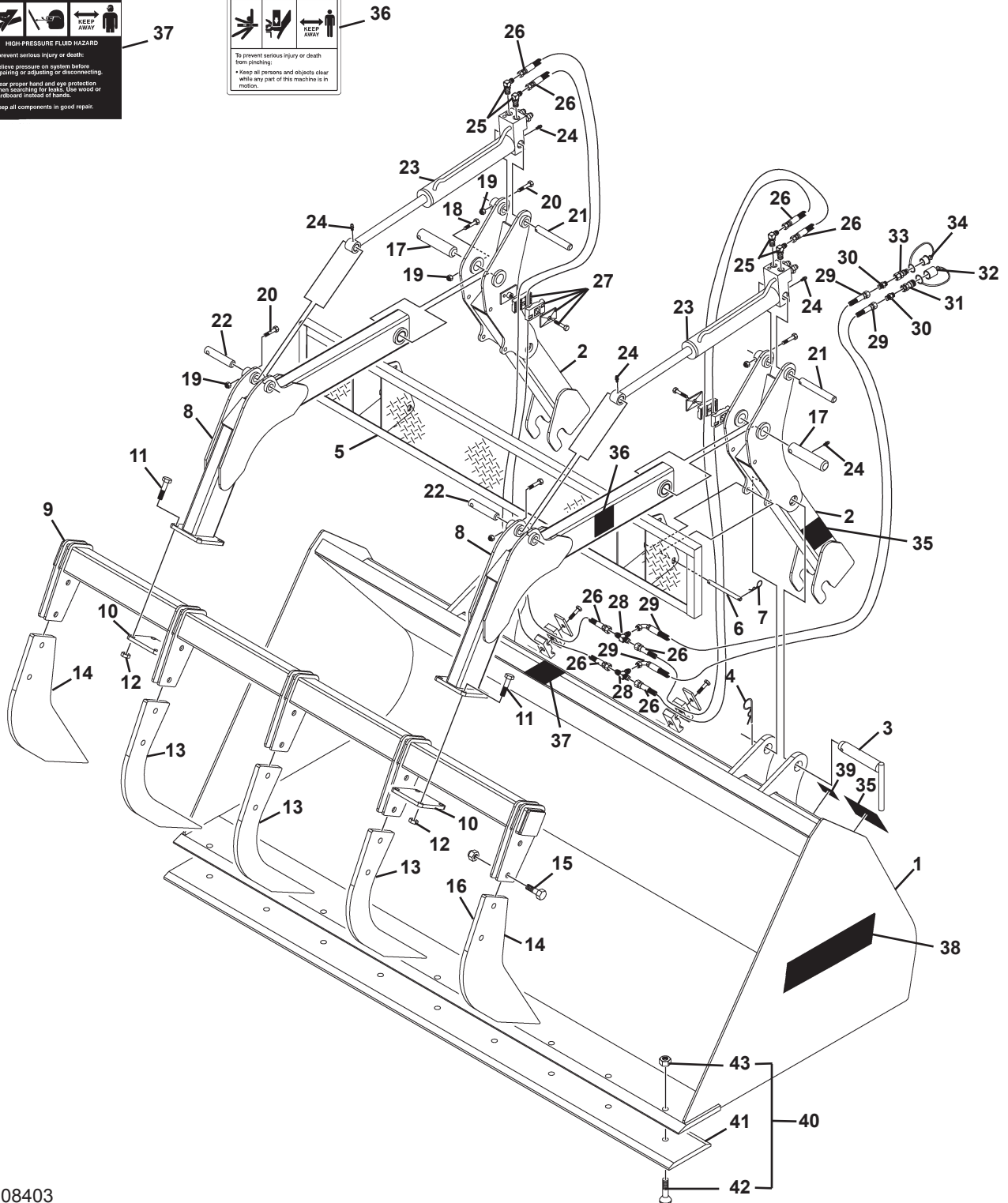
HAY GRAPPLE BUCKET

1.75 CUBIC YARD - ASSEMBLY #307150

<u>ITEM</u>	<u>QTY.</u>	<u>PART NO.</u>	<u>DESCRIPTION</u>
1	1	307151	Bucket Assembly
Grapple Assembly #307153 Includes Items 2 Thru 38			
2	2	304622	Grapple Arm Support
3	2	304646	Pin
4	2	1991	Cotter Hairpin, .25"
5	1	304649	Spill Guard
6	4	304722	Spill Guard Pin, .50" x 5.97"
7	8	1617	Cotter Hairpin, .12"
8	2	304631	Grapple Arm
9	1	304637	Tine Bar
10	2	304636	Tine Bar Mounting Plate
11	8	10119	.62" UNC x 6.00" Hex Capscrew - Gr8
12	8	1839	.62" UNC Deformed Lock Nut
13	3	304641	Inner Tine
14	2	304654	Outer Tine
15	10	10012	.75" UNC x 2.25" Hex Capscrew -Gr8
16	10	1936	.75" UNC Deformed Lock Nut
17	2	304645	Pivot Pin - Grapple Arm, 1.50" x 6.75"
18	2	1051	.38" UNC X 3.00" Hex Capscrew
19	6	1536	.38" UNC Nylock Nut
20	4	1048	.38" UNC x 2.25" Hex Capscrew
21	2	304644	Cylinder Pin, 1.00" x 6.88"
22	2	304643	Cylinder Pin, 1.00" x 5.38"
23	2	33524	Cylinder Assembly
24	4	6616	Grease, Fitting
25	4	30204	90° Elbow 6MBo-6MORFS
26	4	37788	Hose Assembly .38" x 56" 6FFS-6FFS
27	4	81358	Replacement Hose Clamp
28	2	30203	Tee 6MFS-6MFS-6MFS
29	2	38316	Hose Assembly .38" x 76" 8FFS-6FFS 90°
30	2	30205	Straight Connector 12MBo x 8MFS
31	1	22518	Female Coupler
32	1	15558	Dust Plug
33	1	22519	Male Coupler
34	1	14165	Dust Cap
35	1	----	Serial Number, Identification Tag Location
36	2	40149	Danger Decal, Pinch Point
37	1	40151	Warning Decal, High Pressure Fluid
38	2	Varies	Logo
39	1	4338	Made in USA Decal
40	2	14228	Stop Block
41	4	1507	.75" Lock Washer
42	4	1139	.75" UNC x 2.00" Hex Capscrew
Optional Bolt-On Cutting Edge Assembly Includes Items 44 thru 47			
43	1	14611	Cutting Edge .75" x 10.00" x 96.00"
44	2	11586	.62" UNC x 2.75" Plow Bolt - Gr8
45	12	10020	.62" UNC Lock Washer
46	12	1506	.62" UNC Hex Nut
47	12	1230	

HAY GRAPPLE BUCKET

1.75 CUBIC YARD - ASSEMBLY #308403



308403

M-571 1-26-10-3

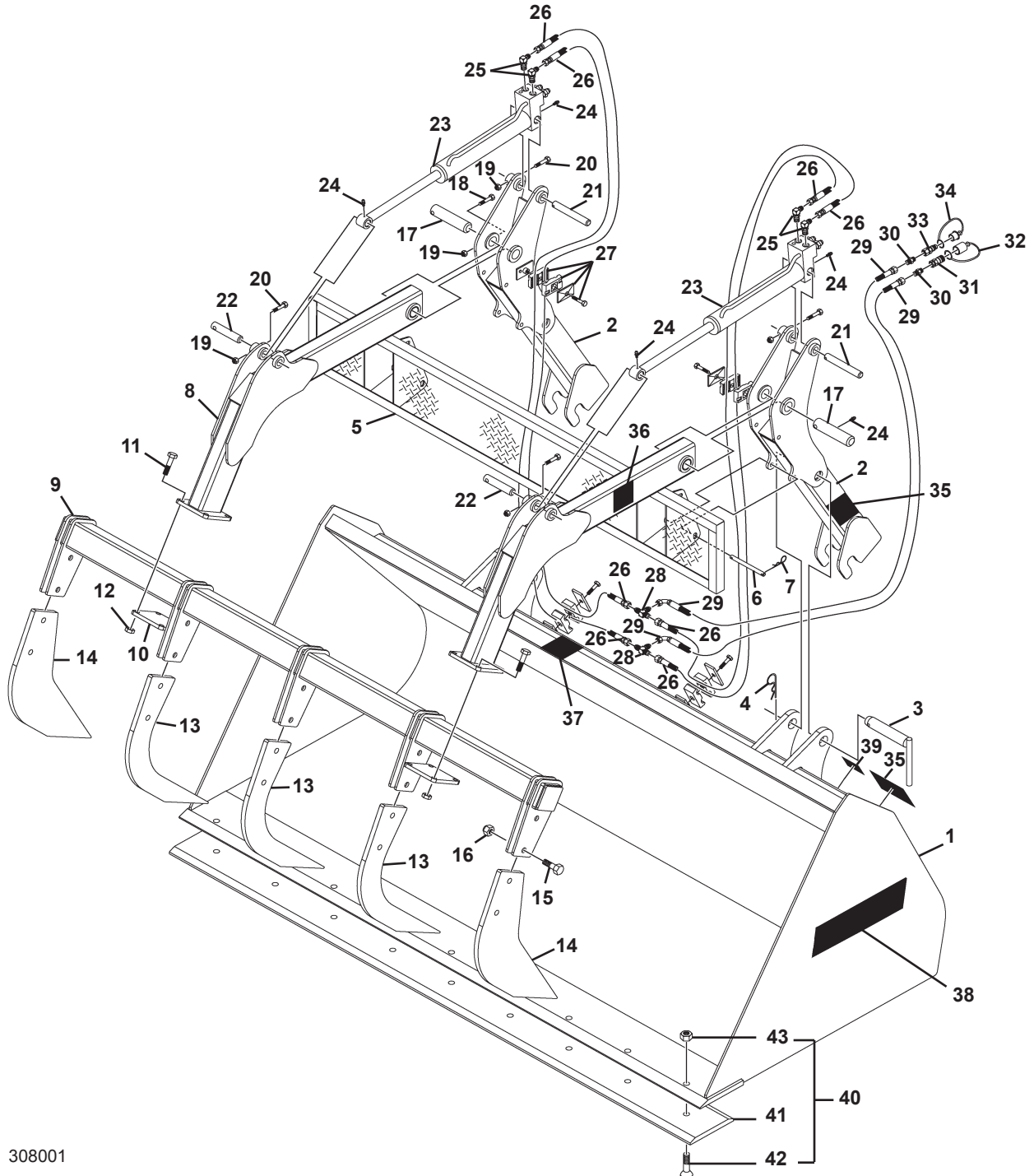
HAY GRAPPLE BUCKET

1.75 CUBIC YARD - ASSEMBLY #308403

<u>ITEM</u>	<u>QTY.</u>	<u>PART NO.</u>	<u>DESCRIPTION</u>
1	1	308280	Bucket Assembly
Optional Grapple Assembly #308281 Includes Items 2 Thru 37			
2	2	304622	Grapple Arm Support
3	2	304646	Pin
4	2	1991	Cotter Hairpin, .25"
5	1	304649	Spill Guard
6	4	304722	Spill Guard Pin, .50" x 5.97"
7	8	1617	Cotter Hairpin, .12"
8	2	304631	Grapple Arm
9	1	304637	Tine Bar
10	2	304636	Tine Bar Mounting Plate
11	8	10119	.62" UNC x 6.00" Hex Capscrew - Gr8
12	8	1839	.62" UNC Deformed Lock Nut
13	3	304641	Inner Tine
14	2	304654	Outer Tine
15	10	10012	.75" UNC x 2.25" Hex Capscrew -Gr8
16	10	1936	.75" UNC Deformed Lock Nut
17	2	304645	Pivot Pin - Grapple Arm , 1.50" x 6.75"
18	2	1051	.38" UNC X 3.00" Hex Capscrew
19	6	1536	.38" UNC Nylock Nut
20	4	1048	.38" UNC x 2.25" Hex Capscrew
21	2	304644	Cylinder Pin, 1.00" x 6.88"
22	2	304643	Cylinder Pin, 1.00" x 5.38"
23	2	33524	Cylinder Assembly
24	6	6616	Grease, Fitting
25	4	30204	90° Elbow 6MBo-6MORFS
26	4	37788	Hose Assembly .38" x 56" 6FFS-6FFS
27	4	81358	Replacement Hose Clamp
28	2	30203	Tee 6MFS-6MFS-6MFS
29	2	38330	Hose Assembly .38" x 70.00" 6FFS-6FFS90°
30	2	30324	Straight Connector 8MBo x 6MFS
31	1	14175	Female Coupler
32	1	17922	Dust Plug
33	1	14176	Male Coupler
34	1	17921	Dust Cap
35	2	----	Serial Number, Identification Tag Location
36	2	40149	Danger Decal, Pinch Point
37	1	40151	Warning Decal, High Pressure Fluid
38	2	Varies	Logo
39	1	4338	Made in USA Decal
Optional Bolt-On Cutting Edge Assembly Includes Items 41 thru 43			
40	1	11002	
41	1	12245	Cutting Edge .75" x 8.00" x 96.00"
42	9	1937	.75" UNC x 2.50" Plow Bolt
43	9	1936	.75" Lock Washer

HAY GRAPPLE BUCKET

2.15 CUBIC YARD - ASSEMBLY #308001



308001

M-567 1-26-10-3

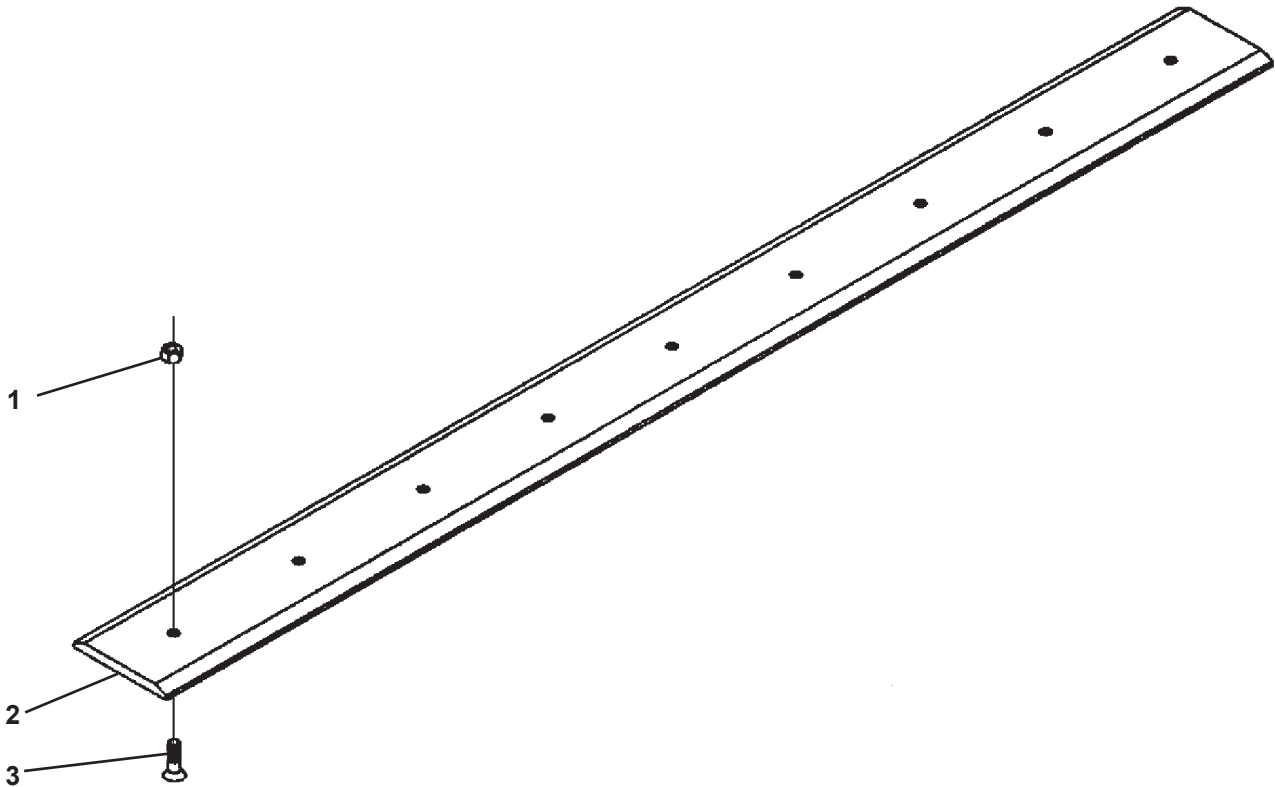
HAY GRAPPLE BUCKET

2.15 CUBIC YARD - ASSEMBLY #308001

<u>ITEM</u>	<u>QTY.</u>	<u>PART NO.</u>	<u>DESCRIPTION</u>
1	1	308002	Bucket Assembly
Optional Grapple Assembly #308281 Includes Items 2 Thru 37			
2	2	304622	Grapple Arm Support
3	2	304646	Pin
4	2	1991	Cotter Hairpin, .25"
5	1	304649	Spill Guard
6	4	304722	Spill Guard Pin, .50" x 5.97"
7	8	1617	Cotter Hairpin, .12"
8	2	304631	Grapple Arm
9	1	304637	Tine Bar
10	2	304636	Tine Bar Mounting Plate
11	8	10119	.62" UNC x 6.00" Hex Capscrew - Gr8
12	8	1839	.62" UNC Deformed Lock Nut
13	3	304641	Inner Tine
14	2	304654	Outer Tine
15	10	10012	.75" UNC x 2.25" Hex Capscrew -Gr8
16	10	1936	.75" UNC Deformed Lock Nut
17	2	304645	Pivot Pin - Grapple Arm , 1.50" x 6.75"
18	2	1051	.38" UNC X 3.00" Hex Capscrew
19	6	1536	.38" UNC Nylock Nut
20	4	1048	.38" UNC x 2.25" Hex Capscrew
21	2	304644	Cylinder Pin, 1.00" x 6.88"
22	2	304643	Cylinder Pin, 1.00" x 5.38"
23	2	33524	Cylinder Assembly
24	6	6616	Grease, Fitting
25	4	30204	90° Elbow 6MBo-6MORFS
26	4	37788	Hose Assembly .38" x 56" 6FFS-6FFS
27	4	81358	Replacement Hose Clamp
28	2	30203	Tee 6MFS-6MFS-6MFS
29	2	38330	Hose Assembly .38" x 70.00" 6FFS-6FFS90°
30	2	30324	Straight Connector 8MBo x 6MFS
31	1	14175	Female Coupler
32	1	17922	Dust Plug
33	1	14176	Male Coupler
34	1	17921	Dust Cap
35	2	----	Serial Number, Identification Tag Location
36	2	40149	Danger Decal, Pinch Point
37	1	40151	Warning Decal, High Pressure Fluid
38	2	Varies	Logo
39	1	4338	Made in USA Decal
Optional Bolt-On Cutting Edge Assembly Includes Items 41 thru 43			
40	1	11002	
41	1	12245	Cutting Edge .75" x 8.00" x 96.00"
42	9	1937	.75" UNC x 2.50" Plow Bolt
43	9	1936	.75" Lock Washer

CUTTING EDGE

ASSEMBLY #11002

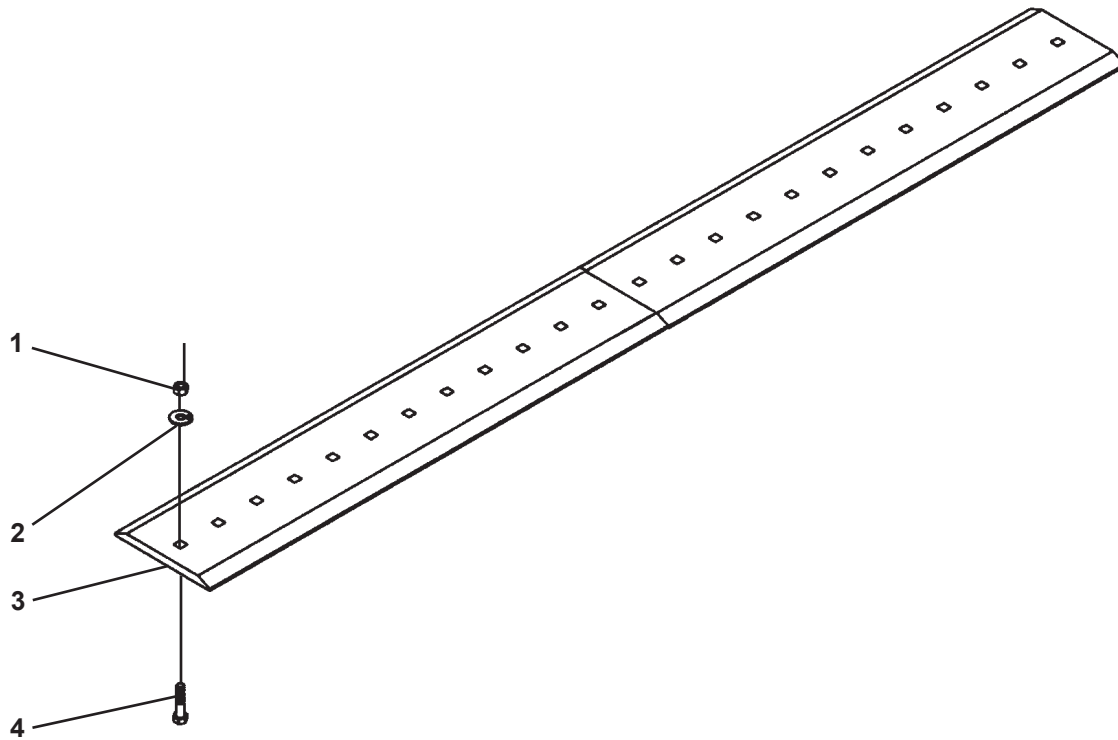


<u>ITEM</u>	<u>QTY</u>	<u>PART NO.</u>	<u>DESCRIPTION</u>
1	9	1936	.75" UNC Deformed Lock Nut
2	1	12245	Bolt-On Cutting Edge, .75" x 8.00" x 96.00"
3	9	1937	.75" UNC x 2.50" Plow Bolt

M-1051 3-2-09-2

CUTTING EDGE

ASSEMBLY #14611

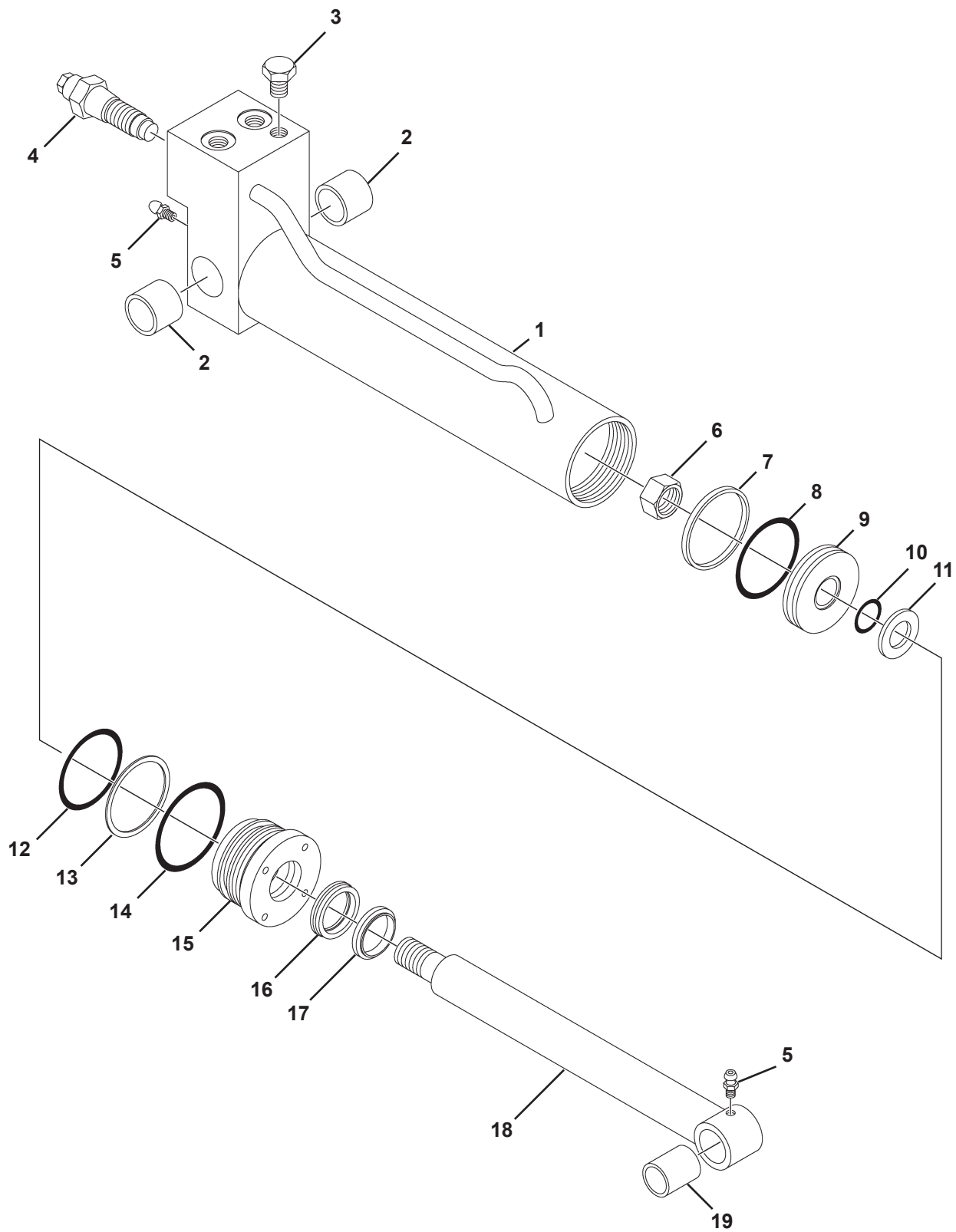


<u>ITEM</u>	<u>QTY</u>	<u>PART NO.</u>	<u>DESCRIPTION</u>
1	12	1230	.62" UNC Hex Nut
2	12	1506	.62" Lock Washer
3	2	11586	Bolt-On Cutting Edge, .75" x 10.00" x 48.13"
4	12	10020	.62" UNC x 2.75" Plow Bolt, Grade 8

M-995 2-19-09-2

CYLINDER ASSEMBLY

ASSEMBLY #33524



M-531 9-13-05-2

CYLINDER ASSEMBLY

ASSEMBLY #33524

<u>ITEM</u>	<u>QTY.</u>	<u>PART NO.</u>	<u>DESCRIPTION</u>
1	1	33525	Cylinder Tube, With Valve
2	2	88919	Bronze Bushing
3	1	3181	Plug
4	2	89120	Valve Cartridge - Over Center
5	2	6616	Grease Zerk
6	1	1483	Hex Nut
7	1	4644*	Piston Ring
8	1	4645*	O-Ring
9	1	50252	Piston
10	1	4641*	O-Ring
11	1	5421	Washer
12	1	4509*	O-Ring
13	1	4510*	Back-Up Washer
14	1	45250*	O-Ring
15	1	77458	Cylinder Gland
16	1	45219*	Poly-Pak Seal
17	1	45389*	Rod Wiper
18	1	88915	Cylinder Rod
19	1	88918	Bronze Bushing

NOTE: Seal Kit #45617 includes all parts marked with an asterisk (*). Parts are not sold separately.



(563) 922-2981
(800) 456-7100

www.paladinattachments.com