



OPERATOR'S AND PARTS MANUAL

FORK CARRIAGE 48" - 66" Side Tilt

**FOR
RTFL, TLB & WL**



SERIAL NUMBER: _____

MODEL NUMBER: _____

Manual Number: 76827

Part Number: 76827

Rev. 3 August, 2018

TABLE OF CONTENTS

PREFACE.....	3
SAFETY PRECAUTIONS	4-7
SAFETY STATEMENTS	4
GENERAL SAFETY PRECAUTIONS.....	4-6
EQUIPMENT SAFETY PRECAUTIONS	7
INSTALLATION AND OPERATION.....	8
ATTACHING	8
DETACHING.....	8
MAINTENANCE AND SERVICE.....	9-11
GENERAL INFORMATION.....	9
DAILY	9
EVERY 40 HOURS	9
LIMITED WARRANTY	13
PARTS	
<u>SIDE TILT FORK CARRIAGES</u>	
48" SIDE TILT FORK CARRIAGE ASSEMBLY #11338	16-17
48" SIDE TILT FORK CARRIAGE ASSEMBLY #12646	18-19
60" SIDE TILT FORK CARRIAGE ASSEMBLY #11414	20-21
60" SIDE TILT FORK CARRIAGE ASSEMBLY #12647	22-23
<u>CYLINDERS</u>	
CYLINDER ASSEMBLY #19309	24-25
CYLINDER ASSEMBLY #89113	26-27

**THIS PAGE
IS INTENTIONALLY
BLANK**

PREFACE

GENERAL COMMENTS

Congratulations on the purchase of your new attachment! This product was carefully designed and manufactured to give you many years of dependable service. Only minor maintenance (such as cleaning and lubricating) is required to keep it in top working condition. Be sure to observe all maintenance procedures and safety precautions in this manual and on any safety decals located on the product and on any equipment on which the attachment is mounted.

This manual has been designed to help you do a better, safer job. Read this manual carefully and become familiar with its contents.

WARNING! Never let anyone operate this unit without reading the "Safety Precautions" and "Operating Instructions" sections of this manual.



Always choose hard, level ground to park the vehicle on and set the brake so the unit cannot roll.

Unless noted otherwise, right and left sides are determined from the operator's control position when facing the attachment.

NOTE: The illustrations and data used in this manual were current (according to the information available to us) at the time of printing, however, we reserve the right to redesign and change the attachment as may be necessary without notification.

BEFORE OPERATION

The primary responsibility for safety with this equipment falls to the operator. Make sure the equipment is operated only by trained individuals that have read and understand this manual. If there is any portion of this manual or function you do not understand, contact your local authorized dealer or the manufacturer to obtain further assistance. Keep this manual available for reference. Provide the manual to any new owners and/or operators.

SAFETY ALERT SYMBOL



This is the "Safety Alert Symbol" used by this industry. This symbol is used to warn of possible injury. Be sure to read all warnings carefully. They are included for your safety and for the safety of others working with you.

SERVICE

Use only manufacturer replacement parts. Substitute parts may not meet the required standards.

Record the model and serial number of your unit on the cover of this manual. The parts department needs this information to insure that you receive the correct parts.

SOUND AND VIBRATION

Sound pressure levels and vibration data for this attachment are influenced by many different parameters: some items are listed below (not inclusive):

- prime mover type, age, condition, with or without cab enclosure and configuration
- operator training, behavior, stress level
- job site organization, working material condition, environment

Based on the uncertainty of the prime mover, operator, and job site, it is not possible to get precise machine and operator sound pressure levels or vibration levels for this attachment.

NOTE: A list of all Paladin Patents can be found at <http://www.paladinattachments.com/patents.asp>.

M-934 10-22-13-5

SAFETY STATEMENTS



THIS SYMBOL BY ITSELF OR WITH A WARNING WORD THROUGHOUT THIS MANUAL IS USED TO CALL YOUR ATTENTION TO INSTRUCTIONS INVOLVING YOUR PERSONAL SAFETY OR THE SAFETY OF OTHERS. FAILURE TO FOLLOW THESE INSTRUCTIONS CAN RESULT IN INJURY OR DEATH.



DANGER

THIS SIGNAL WORD INDICATES A HAZARDOUS SITUATION WHICH, IF NOT AVOIDED, WILL RESULT IN DEATH OR SERIOUS INJURY.



WARNING

THIS SIGNAL WORD INDICATES A HAZARDOUS SITUATION WHICH, IF NOT AVOIDED, COULD RESULT IN DEATH OR SERIOUS INJURY.



CAUTION

THIS SIGNAL WORD INDICATES A HAZARDOUS SITUATION WHICH, IF NOT AVOIDED, COULD RESULT IN MINOR OR MODERATE INJURY.

NOTICE

NOTICE IS USED TO ADDRESS PRACTICES NOT RELATED TO PHYSICAL INJURY.

GENERAL SAFETY PRECAUTIONS

WARNING!



READ MANUAL PRIOR TO INSTALLATION

Improper installation, operation, or maintenance of this equipment could result in serious injury or death. Operators and maintenance personnel should read this manual, as well as all manuals related to this equipment and the prime mover thoroughly before beginning installation, operation, or maintenance. **FOLLOW ALL SAFETY INSTRUCTIONS IN THIS MANUAL AND THE PRIME MOVER'S MANUAL(S).**



READ AND UNDERSTAND ALL SAFETY STATEMENTS

Read all safety decals and safety statements in all manuals prior to operating or working on this equipment. Know and obey all OSHA regulations, local laws, and other professional guidelines for your operation. Know and follow good work practices when assembling, maintaining, repairing, mounting, removing, or operating this equipment.



KNOW YOUR EQUIPMENT

Know your equipment's capabilities, dimensions, and operations before operating. Visually inspect your equipment before you start, and never operate equipment that is not in proper working order with all safety devices intact. Check all hardware to ensure it is tight. Make certain that all locking pins, latches, and connection devices are properly installed and secured. Remove and replace any damaged, fatigued, or excessively worn parts. Make certain all safety decals are in place and are legible. Keep decals clean, and replace them if they become worn or hard to read.

GENERAL SAFETY PRECAUTIONS

WARNING!



PROTECT AGAINST FLYING DEBRIS

Always wear proper safety glasses, goggles, or a face shield when driving pins in or out, or when any operation causes dust, flying debris, or any other hazardous material.

WARNING!



LOWER OR SUPPORT RAISED EQUIPMENT

Do not work under raised booms without supporting them. Do not use support material made of concrete blocks, logs, buckets, barrels, or any other material that could suddenly collapse or shift positions. Make sure support material is solid, not decayed, warped, twisted, or tapered. Lower booms to ground level or on blocks. Lower booms and attachments to the ground before leaving the cab or operator's station.

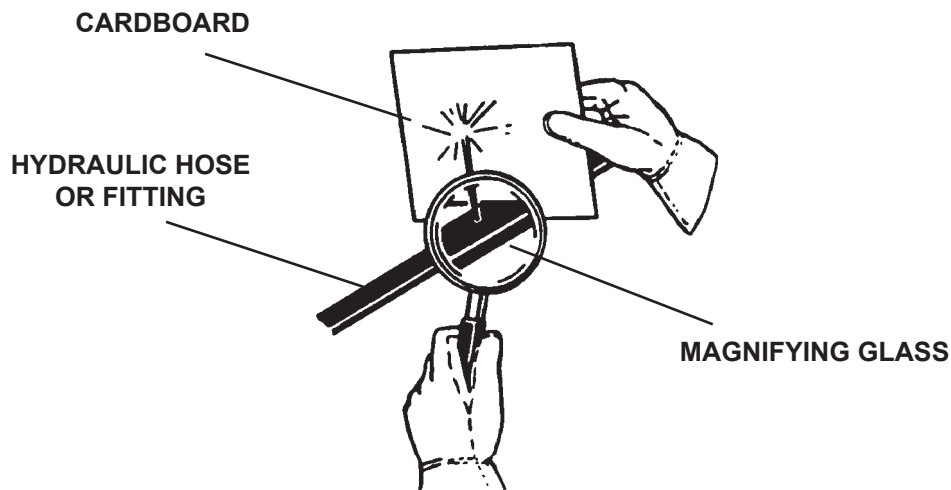
WARNING!



USE CARE WITH HYDRAULIC FLUID PRESSURE

Hydraulic fluid under pressure can penetrate the skin and cause serious injury or death. Hydraulic leaks under pressure may not be visible. Before connecting or disconnecting hydraulic hoses, read your prime mover's operator's manual for detailed instructions on connecting and disconnecting hydraulic hoses or fittings.

- Keep unprotected body parts, such as face, eyes, and arms as far away as possible from a suspected leak. Flesh injected with hydraulic fluid may develop gangrene or other permanent disabilities.
- If injured by injected fluid, see a doctor at once. If your doctor is not familiar with this type of injury, ask him or her to research it immediately to determine proper treatment.
- Wear safety glasses, protective clothing, and use a piece of cardboard or wood when searching for hydraulic leaks. **DO NOT USE YOUR HANDS! SEE ILLUSTRATION.**



GENERAL SAFETY PRECAUTIONS

WARNING!



DO NOT MODIFY MACHINE OR ATTACHMENTS

Modifications may weaken the integrity of the attachment and may impair the function, safety, life, and performance of the attachment. When making repairs, use only the manufacturer's genuine parts, following authorized instructions. Other parts may be substandard in fit and quality. Never modify any ROPS (Roll Over Protection Structure) or FOPS (Falling Object Protective Structure) equipment or device. Any modifications must be authorized in writing by the manufacturer.

WARNING!



SAFELY MAINTAIN AND REPAIR EQUIPMENT

- Do not wear loose clothing or any accessories that can catch in moving parts. If you have long hair, cover or secure it so that it does not become entangled in the equipment.
- Work on a level surface in a well-lit area.
- Use properly grounded electrical outlets and tools.
- Use the correct tools for the job at hand. Make sure they are in good condition for the task required.
- Wear the protective equipment specified by the tool manufacturer.



SAFELY OPERATE EQUIPMENT

Do not operate equipment until you are completely trained by a qualified operator in how to use the controls, know its capabilities, dimensions, and all safety requirements. See your machine's manual for these instructions.

- Keep all step plates, grab bars, pedals, and controls free of dirt, grease, debris, and oil.
- Never allow anyone to be around the equipment when it is operating.
- Do not allow riders on the attachment or the prime mover.
- Do not operate the equipment from anywhere other than the correct operator's position.
- Never leave equipment unattended with the engine running, or with this attachment in a raised position.
- Do not alter or remove any safety feature from the prime mover or this attachment.
- Know your work site safety rules as well as traffic rules and flow. When in doubt on any safety issue, contact your supervisor or safety coordinator for an explanation.

WARNING!



CALIFORNIA PROPOSITION 65 WARNING

This product may contain a chemical known to the state of California to cause cancer, or birth defects or other reproductive harm. www.P65Warnings.ca.gov

EQUIPMENT SAFETY PRECAUTIONS

WARNING!



KNOW WHERE UTILITIES ARE

Observe overhead electrical and other utility lines. Be sure equipment will clear them. When digging, call your local utilities for location of buried utility lines, gas, water, and sewer, as well as any other hazard you may encounter.

WARNING!



EXPOSURE TO RESPIRABLE CRYSTALLINE SILICA DUST ALONG WITH OTHER HAZARDOUS DUSTS MAY CAUSE SERIOUS OR FATAL RESPIRATORY DISEASE.

It is recommended to use dust suppression, dust collection and if necessary personal protective equipment during the operation of any attachment that may cause high levels of dust.

WARNING!



REMOVE PAINT BEFORE WELDING OR HEATING

Hazardous fumes/dust can be generated when paint is heated by welding, soldering or using a torch. Do all work outside or in a well ventilated area and dispose of paint and solvent properly. Remove paint before welding or heating.

When sanding or grinding paint, avoid breathing the dust. Wear an approved respirator. If you use solvent or paint stripper, remove stripper with soap and water before welding. Remove solvent or paint stripper containers and other flammable material from area. Allow fumes to disperse at least 15 minutes before welding or heating.



WORKING WITH THE ATTACHMENT

- Never use the attachment for a work platform or personnel carrier.
- Specified lift capacities must not be exceeded, otherwise machine stability will not be sufficient. Always observe lift capacity limits listed in machine specifications or on load charts furnished with the prime mover.
- An operator must not use drugs or alcohol, which can change his or her alertness or coordination. An operator taking prescription or over-the-counter drugs should seek medical advice on whether or not he or she can safely operate equipment.
- Always check locking pins before operating any attachment.
- Never lift, move, or swing loaded forks over anyone.
- Always space the forks correctly for the load. Loads can fall off incorrectly spaced forks. Make sure the forks are completely under the load before lifting.
- Never stack loads on uneven ground.
- Never lift a load with one fork. A load lifted with one fork can slip off and cause injury.
- Secure loads properly. Unsecured loads can fall unexpectedly.
- Do not handle round bales with fork lift tines.
- Carry the forks low for maximum stability and visibility.
- When operating on slopes, drive up and down, not across. Avoid steep hillside operation, which could cause the prime mover to overturn.
- Reduce speed when driving over rough terrain, on a slope, or turning, to avoid overturning the vehicle.



MAINTAINING THE ATTACHMENT

- Never perform any work on the equipment unless you are authorized and qualified to do so. Always read the operator's and service manual(s) before any repair is made. After completing maintenance or repair, check for correct functioning of the attachment. If not functioning properly, always attach a "DO NOT OPERATE" tag to the machine until all problems are corrected.
- Worn, damaged, or illegible safety decals must be replaced. New safety decals can be ordered from the manufacturer.

M-1014 8-6-18-2

INSTALLATION AND OPERATION

ATTACHING AND DETACHING EQUIPMENT

Please see your vehicle operator's manual for instructions on attaching and detaching your equipment.

OPERATING EQUIPMENT

Read all Safety Precautions before operating your new attachment. If you have not been supplied with a load chart for your attachment, order one from your dealer, and place it inside the operating machine for safe lift capacity limits.

Refer to your machine operator's manual for attachment operation.

SIDE TILT FORK CARRIAGE

When using the tilt feature keep the load as level as possible, using extreme caution when driving off of a slope to reposition the forks, to prevent the load from sliding off of the forks or pallet.

NOTE: If the carriage tilts or drifts due to oil leakage within the cylinder assembly, discontinue use until the problem has been corrected.

When using the shift feature to pick up a load, be sure to return the forks and load to the center position as soon as possible. Do NOT travel with loaded forks shifted to the side.

MAINTENANCE & SERVICE

GENERAL INFORMATION

Regular maintenance is the key to long equipment life and safe operation. Maintenance requirements have been kept to an absolute minimum. However, it is very important that these maintenance functions be performed as described in this section.

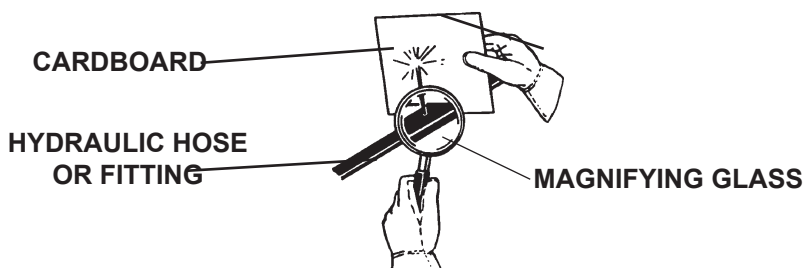
Procedure	Daily	Every 40 Hours
Check all bolts and nuts for tightness.	✓	
Replace any missing bolts or nuts with approved replacement parts.	✓	
Check hydraulic system for hydraulic oil leaks. See procedure below.	✓	
Visually inspect the machine for worn parts or cracked welds, and repair as necessary.	✓	
Check for missing or illegible Safety / Warning Decals.	✓	
Lubricate all grease fittings.		✓

WARNING! Escaping fluid under pressure can have sufficient force to penetrate the skin, causing serious personal injury. Fluid escaping from a very small hole can be almost invisible. Use a piece of cardboard or wood, rather than hands to search for suspected leaks.



Keep unprotected body parts, such as face, eyes, and arms as far away as possible from a suspected leak. Flesh injected with hydraulic fluid may develop gangrene or other permanent disabilities.

If injured by injected fluid, see a doctor at once. If your doctor is not familiar with this type of injury, ask him or her to research it immediately to determine proper treatment.



IMPORTANT: When replacing parts, use only factory-approved replacement parts. Manufacturer will not accept responsibility for use of unapproved parts or accessories, and damages that result from their use.

MAINTENANCE AND SERVICE

CYLINDER SEAL REPLACEMENT

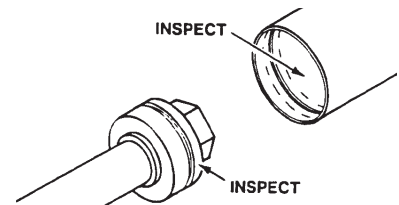
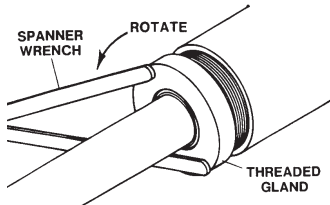
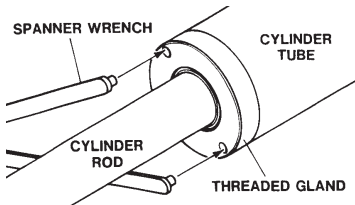
The following information is provided to assist you in the event you should need to repair or rebuild a hydraulic cylinder. When working on hydraulic cylinders, make sure that the work area and tools are clean and free of dirt to prevent contamination of the hydraulic system and damage to the hydraulic cylinders. Always protect the active part of the cylinder rod (the chrome section). Nicks or scratches on the surface of the rod could result in cylinder failure. Clean all parts thoroughly with a cleaning solvent before reassembly.

DISASSEMBLY PROCEDURE

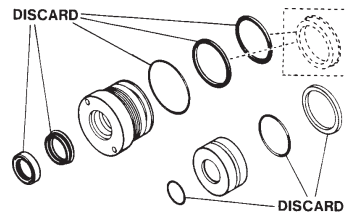
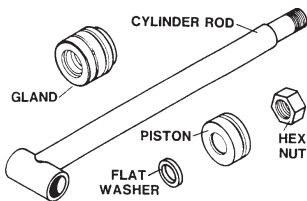
IMPORTANT: Do not contact the active surface of the cylinder rod with the vise. Damage to the rod could result.

THREADED TYPE GLAND

1. Rotate the gland with a spanner wrench counterclockwise until the gland is free of the cylinder tube.
2. Pull the cylinder rod from the cylinder tube and inspect the piston and the bore of the cylinder tube for deep scratches or galling. If damaged, the piston AND the cylinder tube must be replaced.



3. Remove the hex nut, piston, flat washer or spacer tube (if so equipped), and gland from the cylinder rod. If the cylinder rod is rusty, scratched, or bent, it must be replaced.
4. Remove and discard all the old seals.

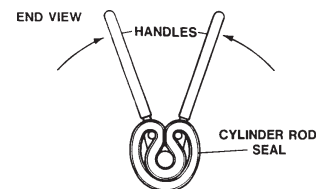
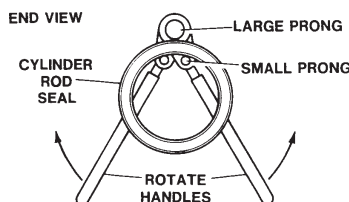
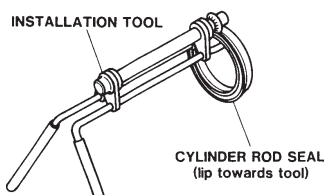


ASSEMBLY PROCEDURE

IMPORTANT: Replace all seals even if they do not appear to be damaged. Failure to replace all seals may result in premature cylinder failure. **NOTE:** Seal kits will service most cylinders of similar bore size and rod diameter.

1. Install the cylinder rod seal in the gland first. Be careful not to damage the seal in the process, as it is somewhat difficult to install.

NOTE: A special installation tool (Part #65349) is available to help with installing the seal. Simply fit the end of the tool over the seal so that the large prong of the tool is on the outside of the seal, and the two smaller prongs on the inside. The lip of the seal should be facing towards the tool. Rotate the handles on the tool around to wrap the seal around the end of the tool.



Rotate the handles on the tool around to wrap the seal around the end of the tool.

10356 10-13-05

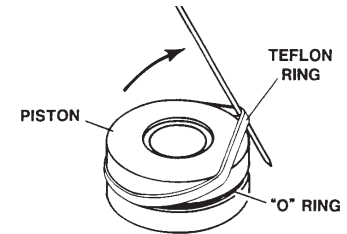
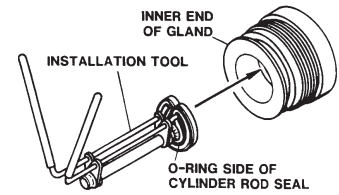
MAINTENANCE AND SERVICE

Now insert the seal into the gland from the inner end. Position the seal in its groove, and release and remove the tool. Press the seal into its seat the rest of the way by hand.

2. Install the new piston ring, rod wiper, O-rings and backup washers, if applicable, on the piston.

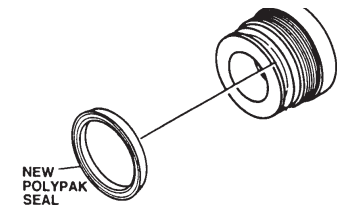
Be careful not to damage the seals. Caution must be used when installing the piston ring. The ring must be stretched carefully over the piston with a smooth, round, pointed tool.

3. After installing the rod seal inside the gland, as shown in step #1, install the external seal.



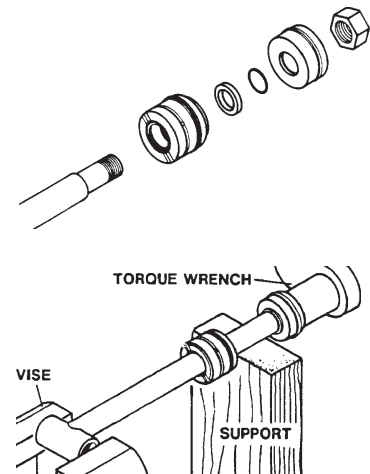
NOTE: Threaded glands may have been equipped with a separate O-ring and backup washer system or a polypak (all in one) type seal. Current seal kits contain a polypak (all in one) type seal to replace the discarded seal types on ALL THREADED GLANDS.

4. Slide the gland onto the cylinder rod, being careful not to damage the rod wiper. Then install the spacer, or flat washer (if so equipped), small o-ring, piston, and hex nut onto the end of the cylinder rod.
5. Secure the cylinder rod (mounting end) in a vise with a support at its center. Torque the nut to the amount shown for the thread diameter of the cylinder rod (see chart).



Thread Diameter	POUNDS - FEET
7/8"	150-200
*1"	230-325
1-1/8"	350-480
1-1/4"	490-670
1-3/8"	670-900
* 1" Thread Diameter WITH 1.25" Rod Diameter	
Min. 230 ft. lbs. Max. 250 ft. lbs.	

IMPORTANT: Do not contact the active surface of the cylinder rod with the vise. Damage to the rod could result.



6. Apply a lubricant (such as Lubriplate #105) to the piston and teflon ring. Insert the cylinder rod assembly into the cylinder tube.

IMPORTANT: Ensure that the piston ring fits squarely into the cylinder tube and piston groove, otherwise the ring may be damaged and a leak will occur.

7. Use a spanner wrench to rotate the gland clockwise into the cylinder. Continue to rotate the gland with the spanner wrench until it is tight.

WARNING!



Cylinders serviced in the field are to be tested for leakage prior to the attachment being placed in work. Failure to test rebuilt cylinders could result in damage to the cylinder and/or the attachment, cause severe personal injury or even death.

**THIS PAGE
IS INTENTIONALLY
BLANK**

LIMITED WARRANTY

In order to provide you with the most UP-TO-DATE Warranty information, Paladin Warranty Statement and Warranty Procedures along with Warranty Registration and Claim Forms have been moved to our website at www.paladinattachments.com.

**THIS PAGE
IS INTENTIONALLY
BLANK**

PARTS

The following section contains detailed diagrams and parts lists which include your attachment. Please use these diagrams and parts lists to locate replacement parts, prior to contacting the parts department.

When servicing your attachment, remember to use only original manufacturer replacement parts. Substitute parts may not meet the standards required for safe, dependable operation.

To facilitate parts ordering, have the model and serial number of your product ready, to ensure that you receive the correct parts for your specific attachment.

The model and serial number for your attachment should be recorded in the space provided on the cover of this manual. This information may be obtained from the serial number identification plate located on your attachment. **See the parts diagram for your attachment for the location.**

NOTE: Most daily and emergency orders received by 2:00 P.M. will be shipped the same day received, with “Emergency-Machine-Down” orders receiving first priority.



PARTS DEPARTMENT

(734) 996-9116

(800) 456-7100

We Encourage Fax Orders

(734) 996-9014

FORK CARRIAGE

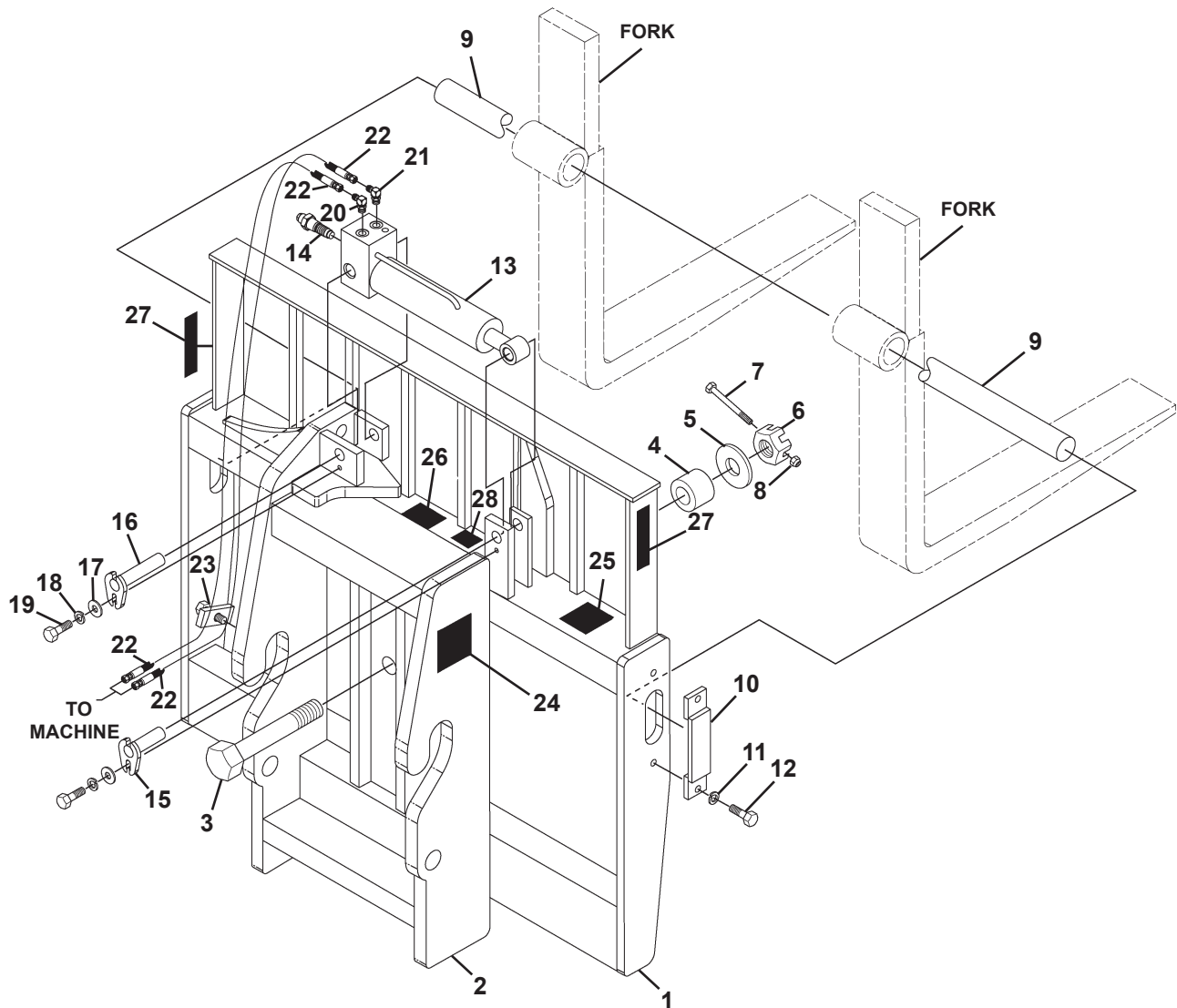
48" SIDE TILT - ASSEMBLY #11338



24



25



11338

M-1056 1-28-10-2

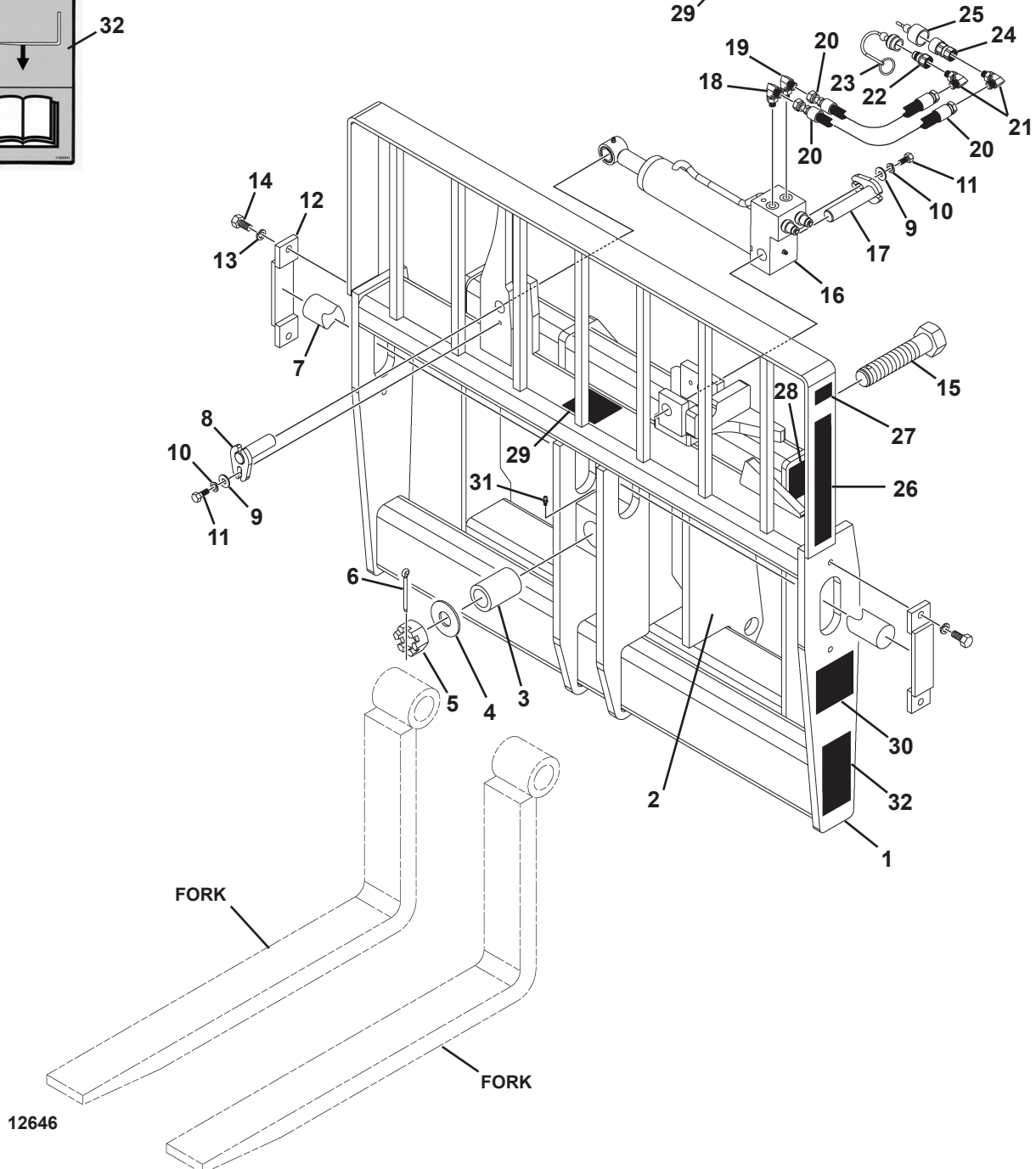
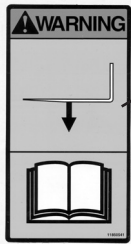
FORK CARRIAGE

48" SIDE TILT - ASSEMBLY #11338

<u>ITEM</u>	<u>QTY.</u>	<u>PART NO.</u>	<u>DESCRIPTION</u>
1	1	15240	Front Frame
2	1	14110	Rear Frame
3	1	10013	1.50" UNF x 7.00" Hex Capscrew, Grade 8
4	1	14099	Spacer
5	1	1522	1.50" Flat Washer
6	1	10019	1.50" UNF Castle Nut
7	1	1050	.38" UNC X 2.75" Hex Capscrew
8	1	1837	.38" UNC Deformed Lock Nut
9	1	15244	Fork Pin, 2.00" Dia. x 49.00" Long
10	1	14002	Fork Pin Retainer
11	2	1505	.50" Lock Washer
12	2	1339	.50" UNF x 1.25" Hex Capscrew
13	1	89113	Cylinder Assembly
14	1	89120	Center Valve
15	1	14071	Pivot Pin, 1.00" Dia. x 3.31" Long
16	1	14070	Pivot Pin, 1.00" Dia. x 4.72" Long
17	2	1514	.38" Flat Washer
18	2	1503	.38" Lock Washer
19	2	1293	.38" UNF x 1.00" Hex Capscrew
20	1	3434	90° Elbow 6MBo-6MJ
21	1	14067	90° Elbow 6MBo-6MJ with .027 Orifice
22	2	14397	Hose, .38" x 69.00" 6FJX-6FJX
23	1	81358	Hose Clamp With Bolt
24	2	40149	Pinch Point Danger Decal
25	1	40151	High Pressure Warning Decal
26	1	-----	Serial Number Identification Tag Location
27	2	Varies	Logo
28	1	4338	Made in USA Decal

FORK CARRIAGE

48" SIDE TILT - ASSEMBLY #12646



12646

M-923 1-28-10-2

FORK CARRIAGE

48" SIDE TILT - ASSEMBLY #12646

<u>ITEM</u>	<u>QTY.</u>	<u>PART NO.</u>	<u>DESCRIPTION</u>
1	1	100063	Front Frame
2	1	100064	Rear Frame
3	1	14099	Tube, 2.25" x 1.53" x 3.31"
4	1	1522	1.50" Flat Washer
5	1	10019	1.50" UNF Castle Nut
6	1	1729	.25" x 2.50" Cotter Pin
7	1	14338	Fork Pin, 2.00" x 50.25"
8	1	14071	Pivot Pin, 1.00" x 3.31"
9	2	1514	.38" Flat Washer
10	2	1503	.38" Lock Washer
11	2	1043	.38" UNC x 1.00" Hex Capscrew
1	2	14002	Fork Pin Retainer Weldment
13	4	1505	.50" Lock Washer
14	4	1339	.50" UNF x 1.25" Hex Capscrew
15	1	10013	1.50" UNF x 7.00" Hex Capscrew, Grade 8
16	1	89113	Cylinder Assembly
17	1	14070	Pivot Pin, 1.00" x 4.72"
18	1	14067	90° Elbow, 6MBo-6MJ, With .027 Orifice
19	1	3434	90° Elbow, 6MBo-6MJ
20	2	37782	Hose .38" X 70" 6FJX-6FJX
21	2	30142	90° Elbow, 8MBo-6MJ
22	1	17139	Male Quick Coupler
23	1	51753	Male Quick Coupler Cover
24	1	17140	Female Quick Coupler
25	1	51754	Female Quick Coupler Cover
26	2	Varies	Logo
27	1	4338	Made in the USA Decal
28	2	40149	Pinch Point Danger Decal
29	1	40151	High Pressure Warning Decal
30	1	-----	Serial Number Identification Tag Location
31	1	9371	Grease Zerk
32	2	40689	Pallet Fork Warning Decal

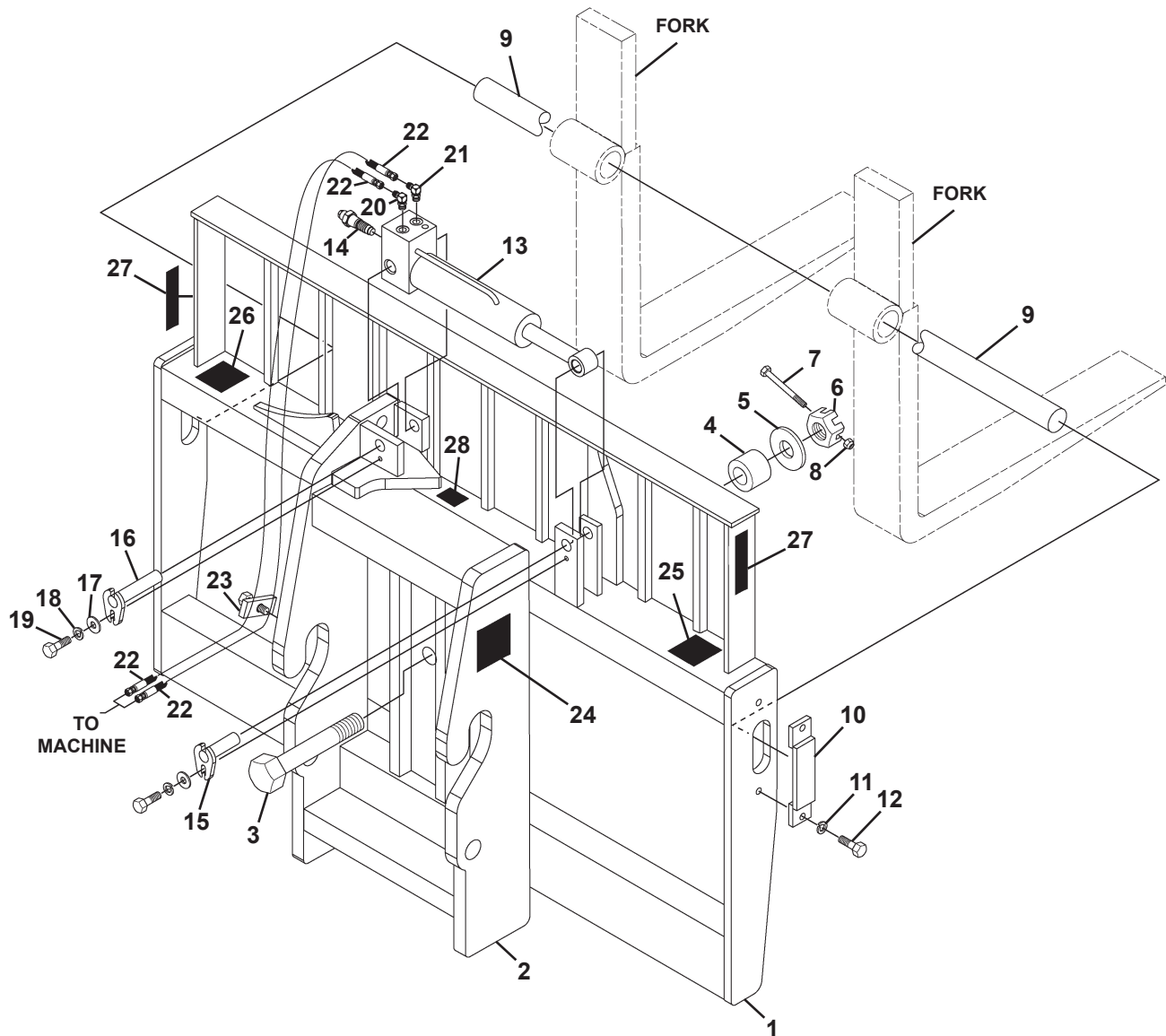
FORK CARRIAGE

60" SIDE TILT - ASSEMBLY #11414



24

25



11414

M-1044 1-28-10-2

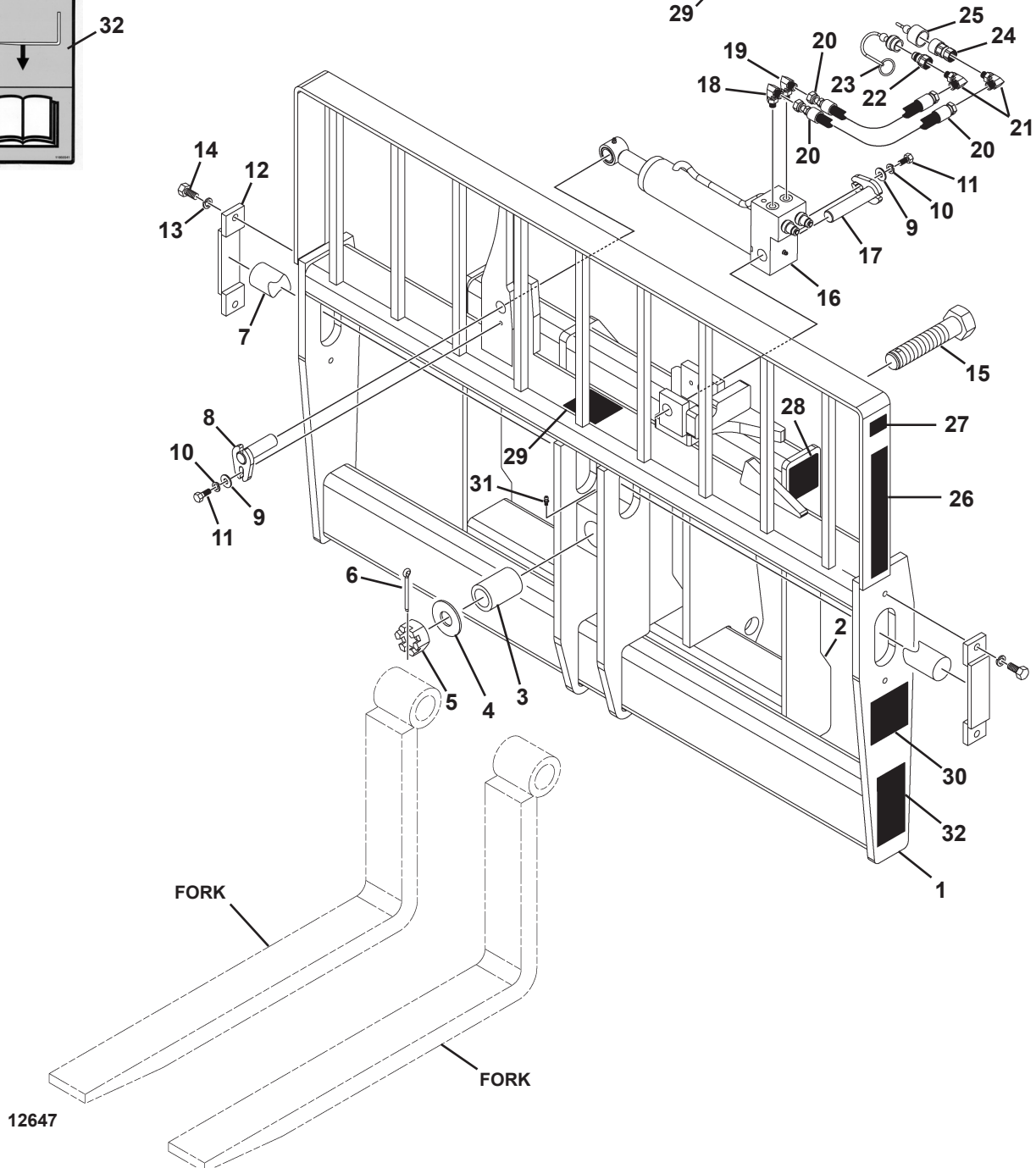
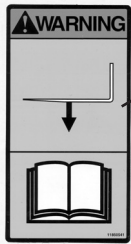
FORK CARRIAGE

60" SIDE TILT - ASSEMBLY #11414

<u>ITEM</u>	<u>QTY.</u>	<u>PART NO.</u>	<u>DESCRIPTION</u>
1	1	14111	Front Frame
2	1	14110	Rear Frame
3	1	10013	1.50" UNF x 7.00" Hex Capscrew, Grade 8
4	1	14099	Spacer
5	1	1522	1.50" Flat Washer
6	1	10019	1.50" UNF Castle Nut
7	1	1050	.38" UNC X 2.75" Hex Capscrew
8	1	1837	.38" UNC Deformed Lock Nut
9	1	32389	Fork Pin, 2.00" Dia. x 64.25" Long
10	2	14002	Fork Pin Retainer
11	4	1505	.50" Lock Washer
12	4	1339	.50" UNF x 1.25" Hex Capscrew
13	1	89113	Cylinder Assembly
14	1	89120	Center Valve
15	1	14071	Pivot Pin, 1.00" Dia. x 3.31" Long
16	1	14070	Pivot Pin, 1.00" Dia. x 4.72" Long
17	2	1514	.38" Flat Washer
18	2	1503	.38" Lock Washer
19	2	1043	.38" UNC x 1.00" Hex Capscrew
20	1	3434	90° Elbow 6MBo-6MJ
21	1	14067	90° Elbow 6MBo-6MJ with .027 Orifice
22	2	14397	Hose, .38" x 69.00" 6FJX-6FJX
23	1	81358	Hose Clamp With Bolt
24	2	40149	Pinch Point Danger Decal
25	1	40151	High Pressure Warning Decal
26	1	-----	Serial Number Identification Tag Location
27	2	Varies	Logo
28	1	4338	Made in USA Decal

FORK CARRIAGE

60" SIDE TILT - ASSEMBLY #12647



12647

M-1038 1-28-10-2

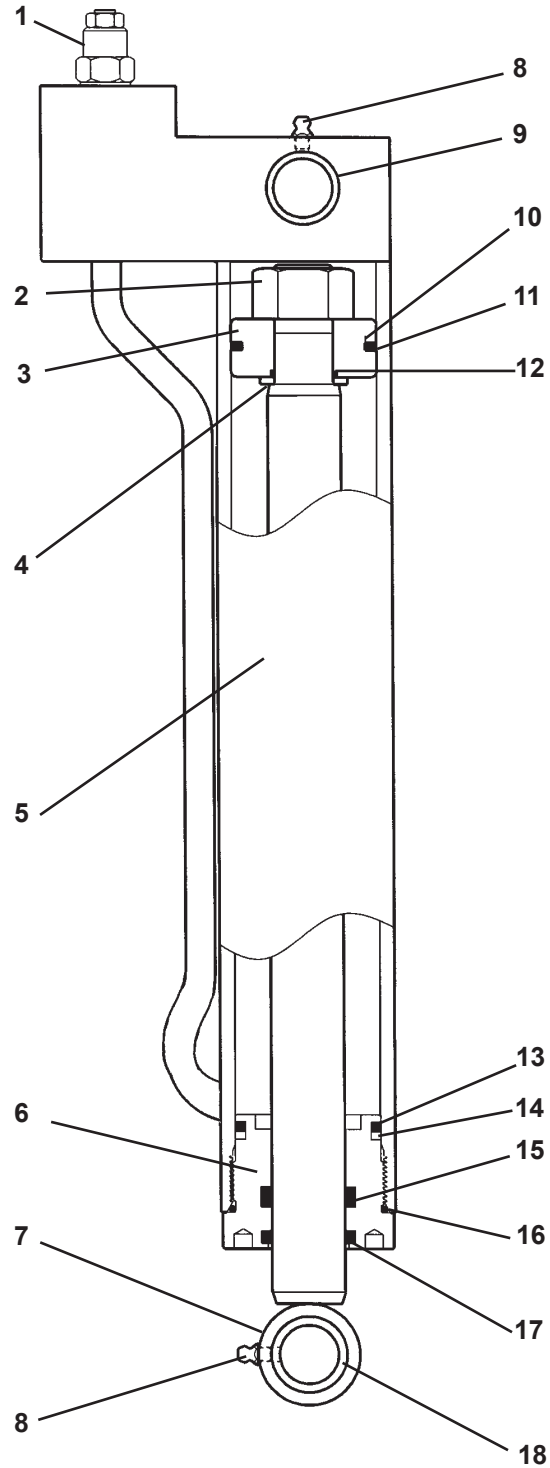
FORK CARRIAGE

60" SIDE TILT - ASSEMBLY #12647

<u>ITEM</u>	<u>QTY.</u>	<u>PART NO.</u>	<u>DESCRIPTION</u>
1	1	100070	Front Frame
2	1	100064	Rear Frame
3	1	14099	Tube, 2.25" x 1.53" x 3.31"
4	1	1522	1.50" Flat Washer
5	1	10019	1.50" UNF Castle Nut
6	1	1729	.25" x 2.50" Cotter Pin
7	1	14339	Fork Pin, 2.00" x 62.25"
8	1	14071	Pivot Pin, 1.00" x 3.31"
9	2	1514	.38" Flat Washer
10	2	1503	.38" Lock Washer
11	2	1043	.38" UNC x 1.00" Hex Capscrew
12	2	14002	Fork Pin Retainer Weldment
13	4	1505	.50" Lock Washer
14	4	1339	.50" UNF x 1.25" Hex Capscrew
15	1	10013	1.50" UNF x 7.00" Hex Capscrew, Grade 8
16	1	89113	Cylinder Assembly
17	1	14070	Pivot Pin, 1.00" x 4.72"
18	1	14067	90° Elbow, 6MBo-6MJ, With .027 Orifice
19	1	3434	90° Elbow, 6MBo-6MJ
20	2	37782	Hose .38" X 70" 6FJX-6FJX
21	2	30142	90° Elbow, 8MBo-6MJ
22	1	17139	Male Quick Coupler
23	1	51753	Male Quick Coupler Cover
24	1	17140	Female Quick Coupler
25	1	51754	Female Quick Coupler Cover
26	2	Varies	Logo
27	1	4338	Made in USA Decal
28	2	40149	Pinch Point Danger Decal
29	1	40151	High Pressure Warning Decal
30	1	----	Serial Number Identification Tag Location
31	1	9371	Grease Zerk
32	2	40689	Pallet Fork Warning Decal

CYLINDER ASSEMBLY

ASSEMBLY #19309



M-1062 12-28-05

CYLINDER ASSEMBLY

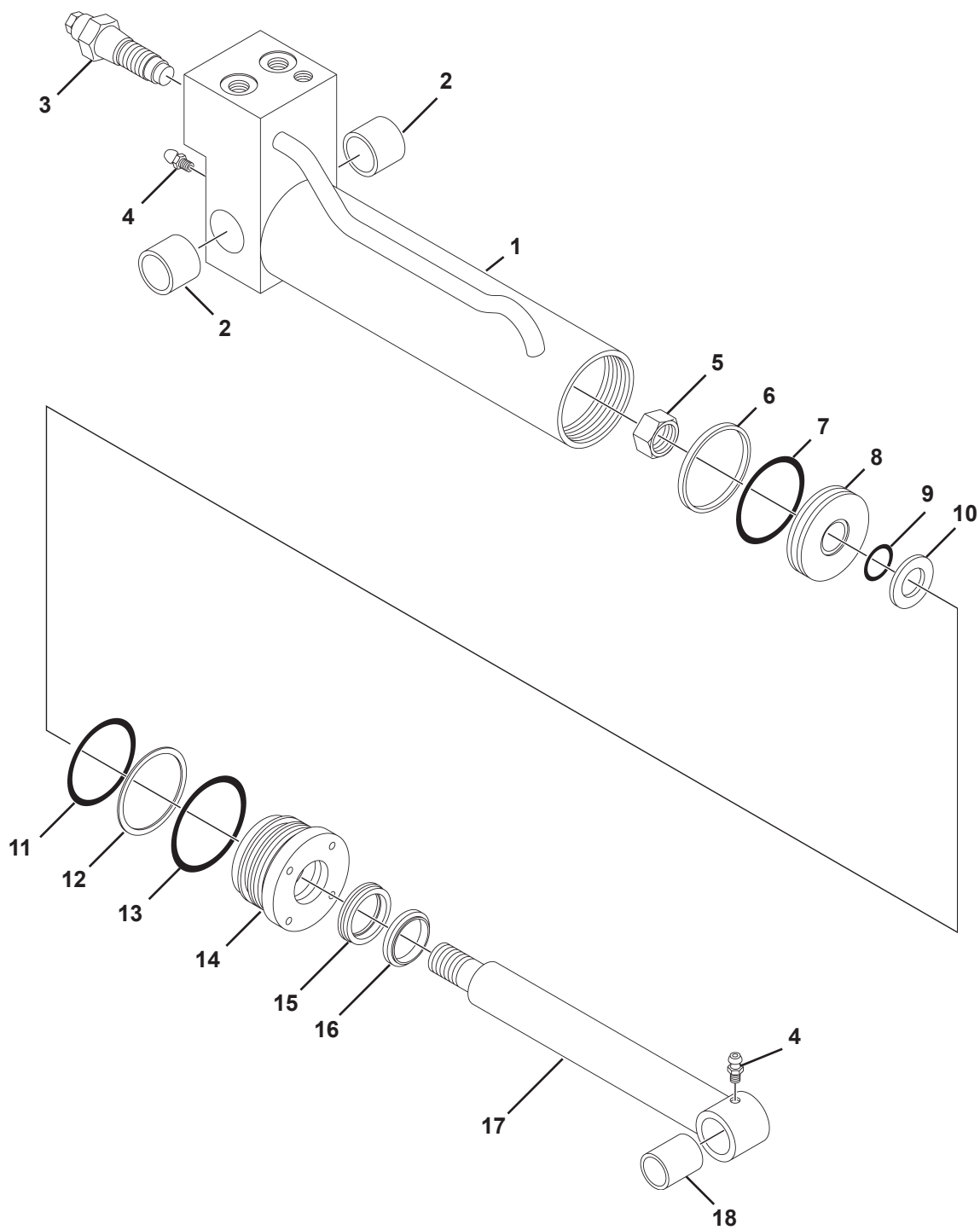
ASSEMBLY #19309

<u>ITEM</u>	<u>QTY.</u>	<u>PART NO.</u>	<u>DESCRIPTION</u>
1	2	89120	Over Center Valve Cartridge
2	1	1483	Hex Nut
3	1	50252	Piston
4	1	5421	Washer
5	1	19310	Cylinder Tube
6	1	77458	Cylinder Gland
7	1	88915	Cylinder Rod
8	2	6616	Grease Zerk
9	2	88919	Bronze Bushing
10	1	4645*	O-Ring
11	1	4644*	Piston Ring
12	1	4641*	O-Ring
13	1	4509*	O-Ring
14	1	4510*	Back-Up Washer
15	1	45219*	Poly-Pak Seal
16	1	45250*	O-Ring
17	1	45389*	Rod Wiper
18	1	88918	Bronze Bushing

NOTE: Seal Kit #45617 includes all parts marked with an asterisk (*). Parts are not sold separately.

CYLINDER ASSEMBLY

ASSEMBLY #89113



CYLINDER ASSEMBLY

ASSEMBLY #89113

<u>ITEM</u>	<u>QTY.</u>	<u>PART NO.</u>	<u>DESCRIPTION</u>
1	1	89114	Cylinder Tube, With Valve
2	2	88919	Bronze Bushing
3	2	89120	Valve Cartridge - Over Center
4	2	6616	Grease Zerk
5	1	1483	Hex Nut
6	1	4644*	Piston Ring
7	1	4645*	O-Ring
8	1	50252	Piston
9	1	4641*	O-Ring
10	1	5421	Washer
11	1	4509*	O-Ring
12	1	4510*	Back-Up Washer
13	1	45250*	O-Ring
14	1	77458	Cylinder Gland
15	1	45219*	Poly-Pak Seal
16	1	45389*	Rod Wiper
17	1	88927	Piston Rod
18	1	88918	Bronze Bushing

NOTE: Seal Kit #45617 includes all parts marked with an asterisk (*). Parts are not sold separately.



(563) 922-2981
(800) 456-7100

www.paladinattachments.com