



## GRAPPLES

**Selection,  
Innovation,  
Performance**

Your One-Stop Shop  
for Hydraulic Tools  
and Attachments





# BRUSH GRAPPLES



## HEAVY-DUTY FEATURES

- 6" tine spacing
- Standard cylinder guards protect all cylinder components
- 1.25" cylinder pivot pins
- 1.25" x 24" full length grapple pins greatly reduce torsional force
- .375" end plates on Utility Grapple .50" end plates on Construction Grapple
- Cushioned and sleeved cylinders are 2" x 8" x 1.25"
- Standard load check valve
- 100,000 PSI tensile yield strength tines

## STANDARD-DUTY FEATURES

- Open floor design
- Features grapple pins and cushioned cylinders
- 80,000 PSI tensile yield strength tines
- 1.25" x 24" grapple pins greatly reduce torsional force

SPECIFICATIONS	STANDARD-DUTY				HEAVY-DUTY		
	32060-0022	32066-0022	32072-0022	32084-0022	32172-0022	32178-0022	32184-0022
A. Overall Width	60"	66"	72"	84"	72"	78"	84"
B. Overall Height - Grapple Open	33"	33"	33"	33"	40"	40"	40"
C. Overall Height - Grapple Closed	29"	29"	29"	29"	29"	29"	29"
D. Overall Depth	36"	36"	36"	36"	39"	39"	39"
Weight	668 lbs	696 lbs	724 lbs	817 lbs	995 lbs	1010 lbs	1070 lbs
Number of Tines	9	10	11	13	14	14	16

**IMPORTANT:** All replacement hydraulic hoses and fittings must have a minimum rated working pressure of 4000 psi.

### Hose Kit Part Numbers

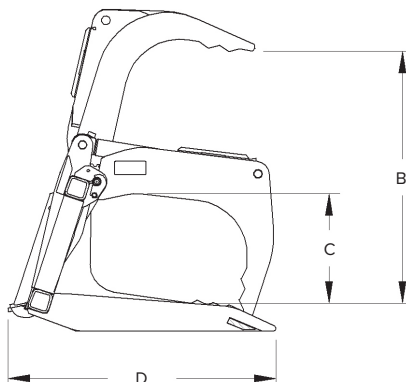
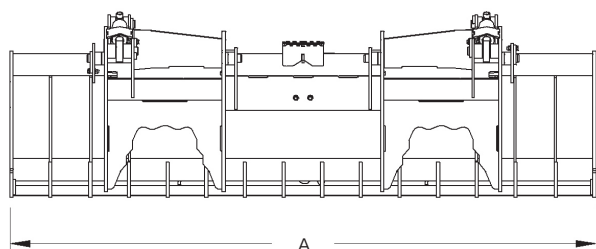
60"	80"	88"
MTG1113-0022	MTG1113-0903	MTG1113-9783

OPTIONS	ORDER CODE	WEIGHT
Stop Kit - John Deere G-Series* for HD Grapples	239072	6

\*Stops to be used on John Deere G-Series to prevent hydraulic coupler interference.

**Carrier Specifications:**

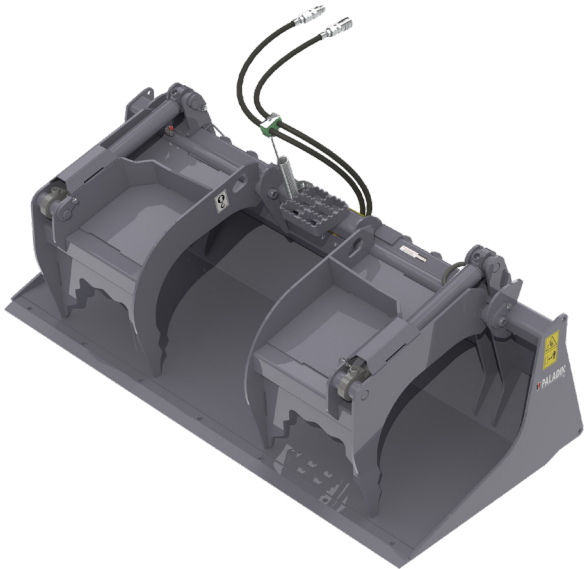
<b>Utility</b>	<b>Construction</b>
lift capacities <4,000 lbs	<5,000 lbs
operating weight <6,500 lbs	<9,500 lbs



# SCRAP GRAPPLES

## STANDARD AND HEAVY-DUTY FEATURES

- Standard cylinder guards protect all cylinder components
- Standard load check valve
- 1.25" cylinder pivot pins with spherical bearings
- 1.25" x 24" full length grapple pins reduce torsional force
- Cushioned cylinders are 2" x 8" x 1.25"
- Optional, reversible .75" x 8" double bevelled edge
- Secluded grease zerks protects from damage



SPECIFICATIONS	STANDARD-DUTY			HEAVY-DUTY		
	12860-0022	12866-0022	12872-0022	11876-0022	11882-0022	11888-0022
A. Overall Width	61"	67"	73"	77"	83"	89"
B. Overall Height - Grapple Open	34"	34"	34"	40"	40"	40"
C. Overall Height - Grapple Closed	29"	29"	29"	29"	29"	29"
D. Overall Depth	34"	34"	34"	39"	39"	39"
Weight	738 lbs	788 lbs	835 lbs	1081 lbs	1133 lbs	1180 lbs

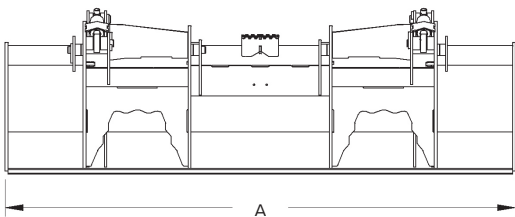
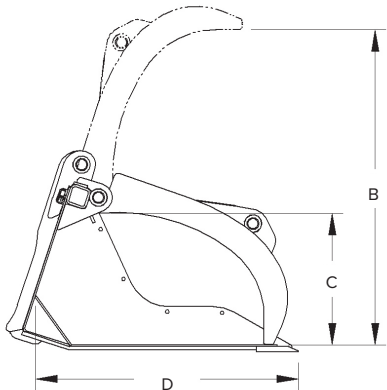
**IMPORTANT:** All replacement hydraulic hoses and fittings must have a minimum rated working pressure of 4000 psi.

**\*NOTE:** When ordering new Grapples you must also order the appropriate hose kit. The new Grapples will not automatically ship with hoses.

<b>Carrier Specifications:</b>	<b>Utility</b>	<b>Construction</b>
<b>lift capacities</b>	<4,000 lbs	<5,000 lbs
<b>operating weight</b>	<6,500 lbs	<9,500 lbs

### Hose Kit Part Numbers

60"	80"	88"
MTG1113-0022	MTG1113-0903	MTG1113-9783

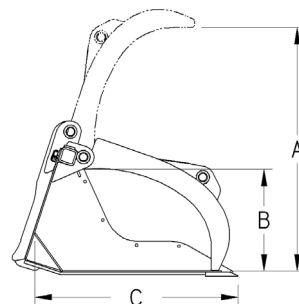


# SCRAP GRAPPLES

## MODEL 120 HEAVY-DUTY SCRAP GRAPPLES

For Skid-Steer Loaders and Compact Tool Carriers

- Optional cylinder guards protect all cylinder components
- 1.5" x 8.625" heat-treated, greasable pivot pins on full feature
- 1.5" x 27.125" grapple pins reduce torsional force
- .375" end plates
- Cushioned & sleeved cylinders are 2.5" x 8" x 1.75" on full feature
- Bucket edge drilled for FFC® replaceable edge unless specified
- Optional .75" x 8" double beveled edge



SPECIFICATIONS	FULL FEATURED				STANDARD FEATURED			
	LAF5273	LAF5278	LAF5282	LAF5287	LAF5073	LAF5078	LAF5082	LAF5087
A. Width	74"	79"	83"	88"	74"	79"	83"	88"
B. Overall Height - Grapple Open	45.4"	45.4"	45.4"	45.4"	45.4"	45.4"	45.4"	45.4"
C. Overall Height - Grapple Closed	19.1"	19.1"	19.1"	19.1"	19.1"	19.1"	19.1"	19.1"
D. Overall Depth	37.8"	37.8"	37.8"	37.8"	37.8"	37.8"	37.8"	37.8"
Weight	1303 lbs	1514 lbs	1542 lbs	1571 lbs	1266 lbs	1301 lbs	1329 lbs	1364 lbs

**IMPORTANT:** All replacement hydraulic hoses and fittings must have a minimum rated working pressure of 4000 psi.

**\*NOTE:** When ordering new Grapples you must also order the appropriate hose kit. The new Grapples will not automatically ship with hoses.

<b>Carrier Specifications:</b>	<b>Utility</b>	<b>Construction</b>
<b>lift capacities</b>	<4,000 lbs	<5,000 lbs
<b>operating weight</b>	<6,500 lbs	<9,500 lbs

OPTIONS	ORDER CODE	WEIGHT
Hardened Pin Kit for Model 120	LAF5003	45
Cylinder/Hose Guard Kit for Model 120	LAF5004	57
End Plate Extension - Full Kit for Model 120	LAF5250	NA

## MODEL 130 HEAVY-DUTY SCRAP GRAPPLES

For Telehandlers, Wheel Loaders and Backhoe Loaders

- Optional cylinder guards protect all cylinder components
- 1.5" x 8.625" heat-treated, greasable pivot pins
- 1.5" x 27.125" grapple pins reduce torsional force
- Cushioned & sleeved cylinders are 2.5" x 8" x 1.75"
- Bucket edge drilled for FFC replaceable edge unless specified
- Optional .75" x 8" double beveled edge

<b>Carrier Specifications:</b>	
<b>lift capacities</b>	<9,000 lbs
<b>operating weight</b>	<11,000 lbs

SPECIFICATIONS	LAF5283	LAF5294
A. Width	83"	94"
B. Overall Height Grapple Open	47.4"	47.4"
C. Overall Height Grapple Closed	21.8"	21.5"
D. Overall Depth	37.3"	37.3"
Weight	1665 lbs	1745 lbs

**IMPORTANT:** All replacement hydraulic hoses and fittings must have a minimum rated working pressure of 4000 psi.

OPTIONS	ORDER CODE	WEIGHT
End Plate Extension - Full Kit for Model 120	LAF5252	50



**PALADIN**

2800 Zeeb Road // Dexter, MI 48130 // 833-723-1843 // [www.paladinattachments.com](http://www.paladinattachments.com)